



## Westmark Tower, London, W2

£4,900 pcm

- 2 bedrooms
- 2 bathrooms
- 926 sq ft
- Furnished
- Private Balcony
- Upper floor
- 24 hr Concierge
- Luxury residents facilities

*Brand new 2 bedroom, 2 bathroom apartment set within Westmark Tower, part of the sought-after West End Gate development.*

*Close to all the amenities of central London, this furnished property comprises a spacious open plan kitchen/ living room with access to a private balcony, two double bedrooms and two bathrooms (master en suite).*

*The open plan reception area is ideal for entertaining and the West facing balcony is perfect for sunset views across London.*

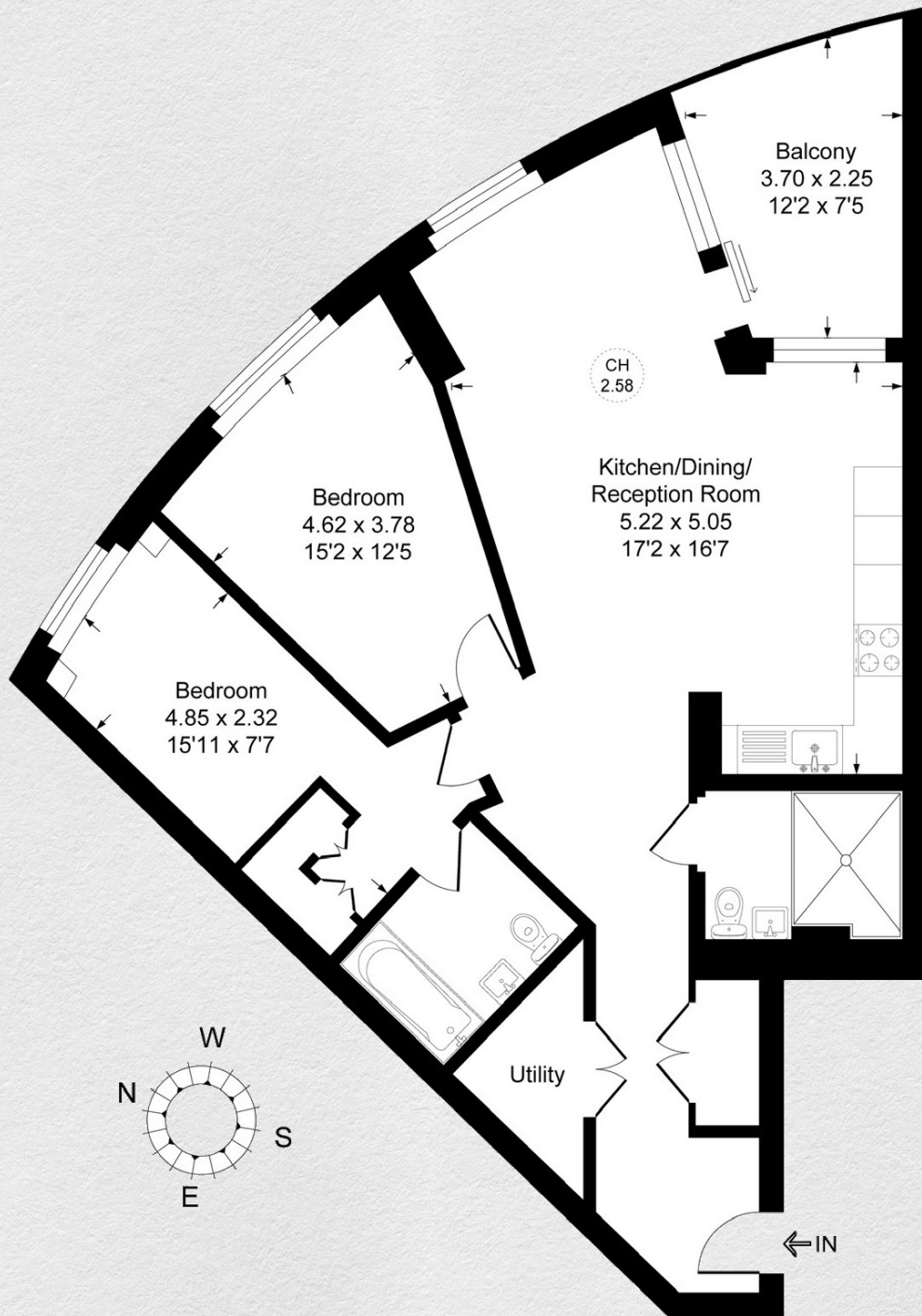
*The development benefits from 24hr concierge, private resident's gym, pool and spa, cinema screening room, business lounge and resident's garden.*

*West End Gate is located close to the West End, Hyde Park and many transport links from Edgware Road and Paddington including the future Crossrail station for Elizabeth line trains.*









Address:

Westmark Tower, London, W2

sq ft

926

bed

2

bath

2

*\*\* For illustration purposes only. Could not be to scale. One-London aims to ensure accuracy but is not liable for any discrepancies.*