



## 9 Millbank, London, SW1

£5,500 pcm

- 1 bedroom with dressing area
- 2 bathrooms
- Large private balcony/terrace
- 923 sq ft
- High ceilings
- Luxury residents' facilities
- Prestigious location
- 24 hour concierge
- Excellent transport links

*Stunning 1 bedroom – 2 bathroom apartment in the prestigious 9 Millbank on the banks of the River Thames*

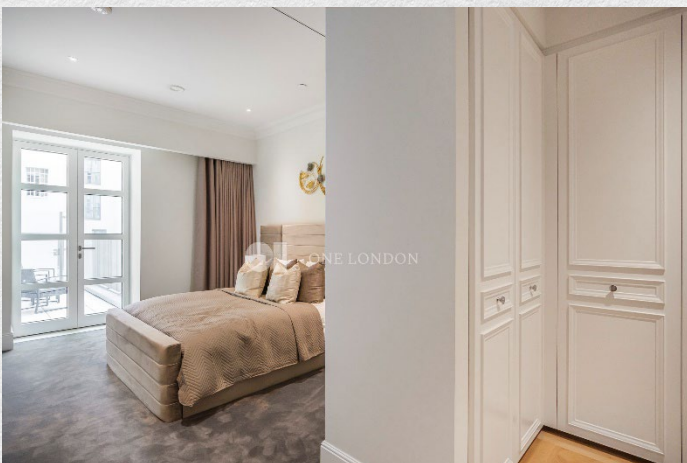
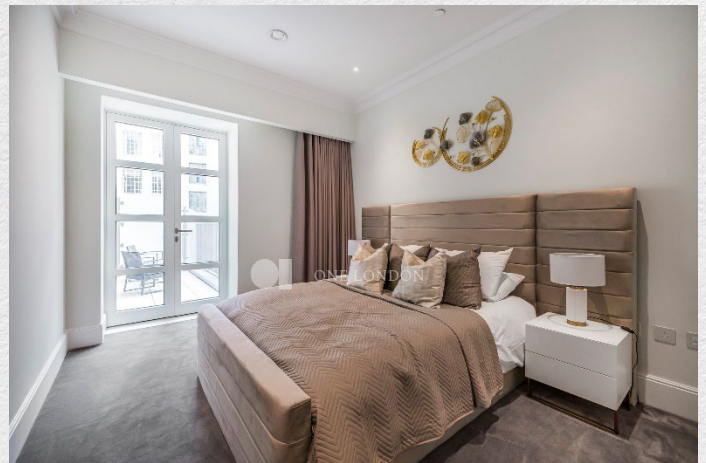
*Extremely spacious, 923 square foot apartment has a very large living room and open plan kitchen, and a stunning walk in dressing area to the bedroom with en suite.*

*Within the exclusive new development there are excellent residents' amenities including a Gym, Swimming pool, spa and treatments room, cinema room and 24hr concierge.*

*For residents' comfort, all properties in 9 Millbank have underfloor heating throughout, and comfort cooling to all reception rooms and bedrooms.*

*Millbank is fantastically located near to the theatres of the West End, amenities of Knightsbridge, and wonderful local restaurants. There are excellent educational institutions nearby as well as the transport links of Westminster, Victoria, St James Park and Pimlico Underground and National Rail Stations.*







## 9 Millbank Residence, London

**MILLBANK, 9 MILLBANK RESIDENCES, SW1P**  
APPROXIMATE GROSS INTERNAL FLOOR AREA 923 SQ.FT (85.8 SQ.M)

