



Oakley House, Battersea Roof Gardens, London

£3,500 pcm

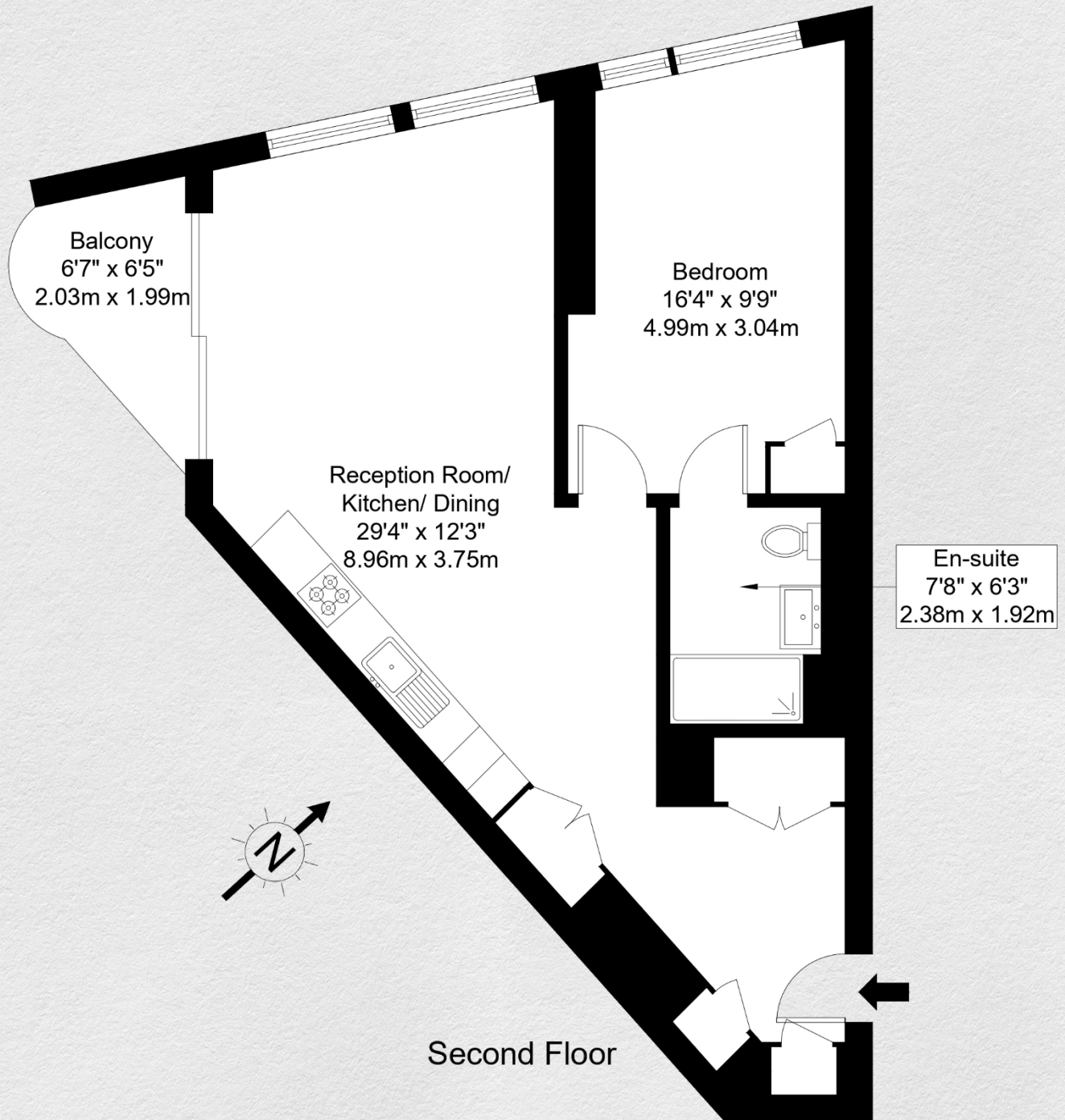
- Second floor apartment
- 1 bedroom
- 1 bathroom
- 611 sq ft
- Residents Lounge and Cinema
- 24 hour concierge
- Sought after location
- Great transport links
- Vibrant area

Stunning, 1 bedroom, 1 bathroom apartment in the Foster & Partners designed Battersea Roof Gardens part of the Battersea Power Station development in London.

Large open plan living area leading to a private balcony. You have a bright kitchen and dining area with a en suite bedroom. This apartment is bright and full of natural light through the large windows. Ideal for entertaining, this stunning apartment offers a generous amount of external space providing amazing views. This is ready to move in.

Situated on the River Thames, the apartment is ideally located for Chelsea, Battersea Park and the tube, rail and Thames Clipper transport links nearby.





Address:

Oakley House, Battersea Roof Gardens, London

sq ft

611

bed

1

bath

1

*** For illustration purposes only. Could not be to scale. One-London aims to ensure accuracy but is not liable for any discrepancies.*