



## 101 Cleveland Street, Fitzrovia, London, W1T

£6,000 pcm

*Large 927 sq ft two bedroom, two bathroom apartment is located within a new-build development in the heart of Fitzrovia.*

- Two bedrooms
- Two bathrooms
- 2 private balconies
- 927 sq ft
- Open plan reception area
- Premium residents' facilities
- Desirable location
- 24 hour concierge
- Podium landscaped gardens
- Close to Oxford Street

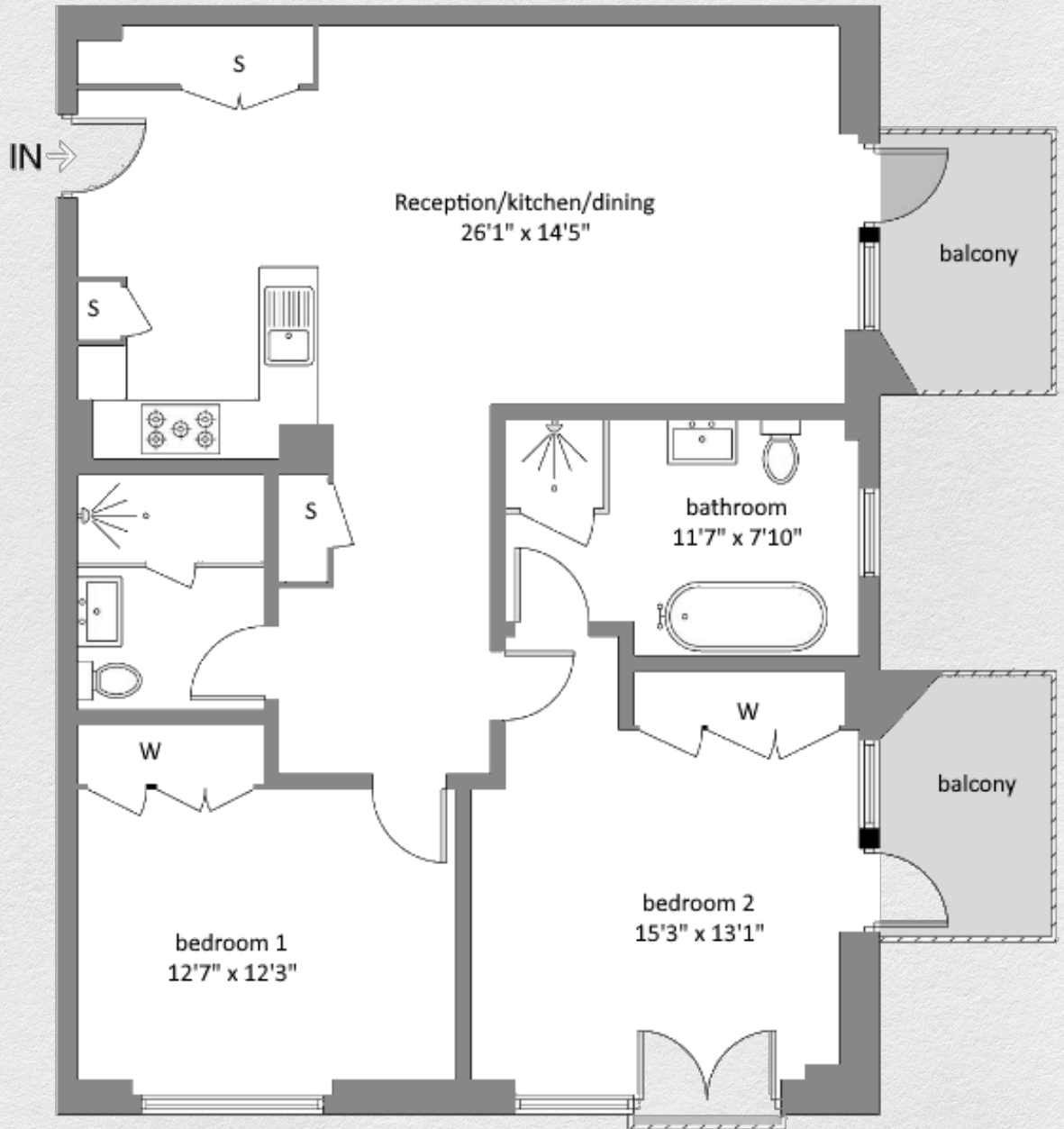
*The open plan reception/kitchen/dining room offers spectacular far-reaching views from one of the balconies and an abundance of natural light. A large master en-suite bedroom with fitted wardrobes also has its own private balcony, a second bedroom also comes with fitted wardrobes. The apartment further benefits from underfloor heating, comfort cooling, a guest shower room and an ample storage space.*

*101 on Cleveland is a new residential development located in the heart of Fitzrovia, W1. The completed building has been designed by award winning architectural and interior design practice Assael.*

*Residents will benefit from a wide range of amenities including 24-hour concierge, private dining room, residents' bar and lounge, screening room, gym, sauna and steam room.*

*The development is perfectly placed to benefit from London's vibrant culture and burgeoning art scene. From shopping on Bond Street and Oxford Street, to dining at some of the city's best restaurants, to peaceful walks in Regent's Park. There is something for everyone.*





Address:	sq ft	bed	bath
101 Cleveland Street, Fitzrovia, London, W1T	927	2	2

*\*\* For illustration purposes only. Could not be to scale. One-London aims to ensure accuracy but is not liable for any discrepancies.*