



Westmark Tower, London, W2

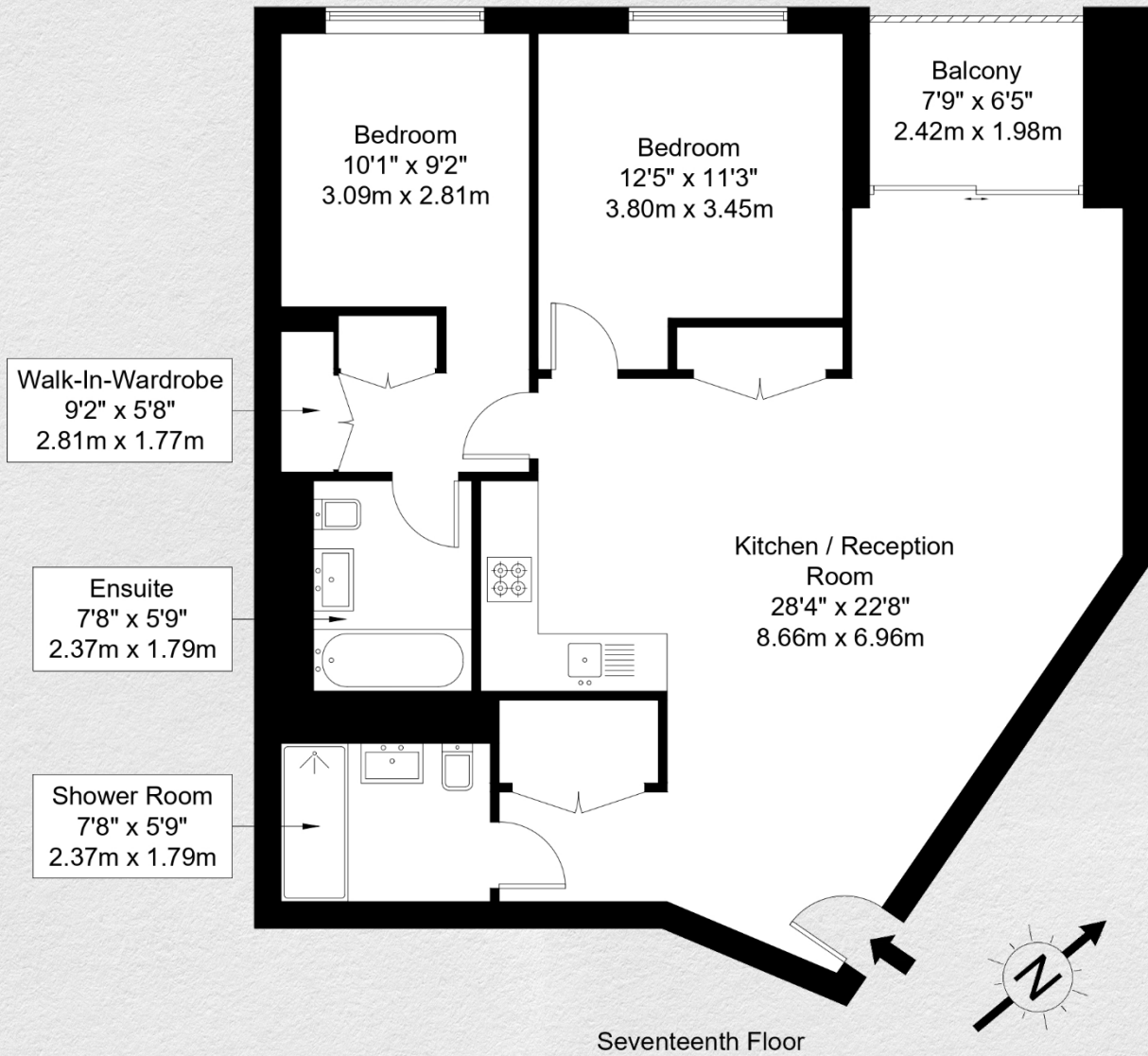
£1,400,000

- 17th floor apartment
- 2 bedrooms
- 2 bathrooms
- 894 sq ft
- West facing balcony
- Comfort cooling throughout
- Utility room
- 24 hr Concierge
- Offering five-star amenities, swimming pool, gym, cinema, residents lounge, private dining area and co-working spaces
- Communal gardens & central piazza

This immaculately presented two-bedroom, two bathroom apartment is located on the seventeenth floor of the prestigious Westmark Tower, part of Berkeley's West End Gate development in vibrant West London, housed between Marylebone and Paddington.

Designed by renowned architects Squire & Partners, completed in 2021 Westmark Tower offers a range of superb facilities, including 24-hour concierge & security, gym, swimming pool, business lounge, private residents' cinema, and co-working spaces. Beautiful communal gardens with a central piazza courtyard complete with water features and landscaping is a central focus and Paddington station is close-by with Oxford Street, the West End and Regent's Park all within a short walking distance.





Address:	sq ft	bed	bath
Westmark Tower, London, W2	894	2	2

*** For illustration purposes only. Could not be to scale. One-London aims to ensure accuracy but is not liable for any discrepancies.*