



Westbourne Terrace, Paddington, London, W2

£7,200 pcm

- Available now !!
- Duplex apartment
- Designed by Elena Karoula
- 3 bedrooms (all en-suite)
- 4 bathrooms
- Spacious reception room
- Fully furnished
- 1,910 sq ft
- Private jacuzzi
- Sought after location.
- Private terrace
- Walk-in wardrobe

Stunning 3-bedroom duplex apartment (known as The Grand Maisonette) designed by the renowned architect Elena Karoula is finished to a hotel Presidential suite standard. Fully furnished. Available now !!

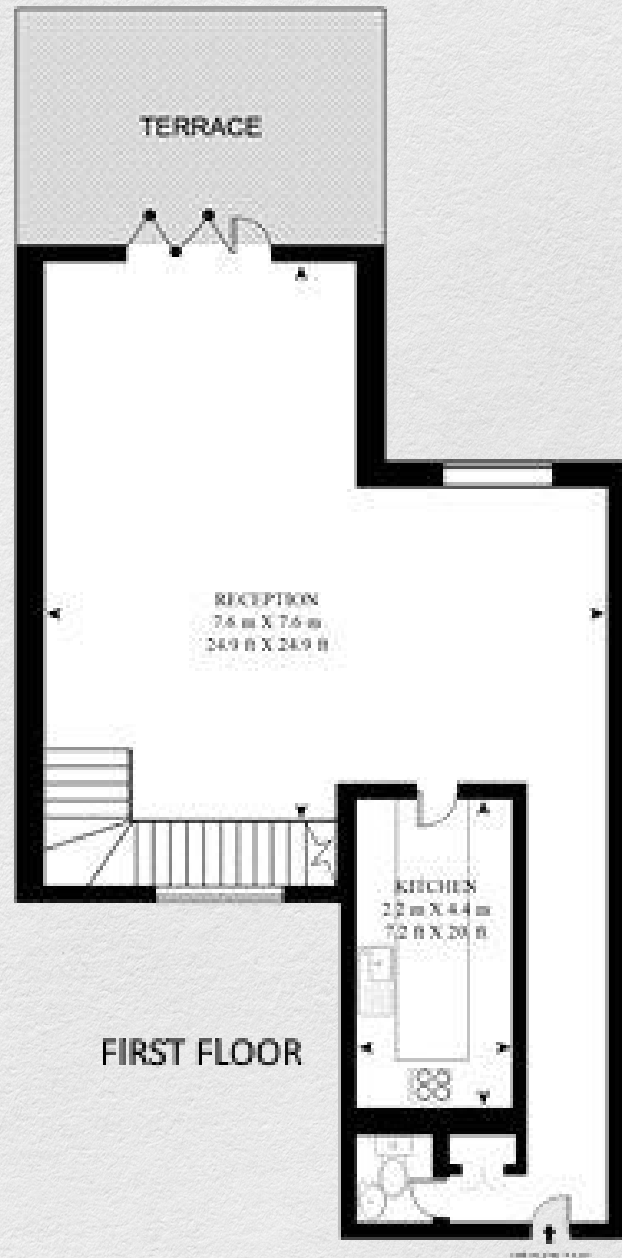
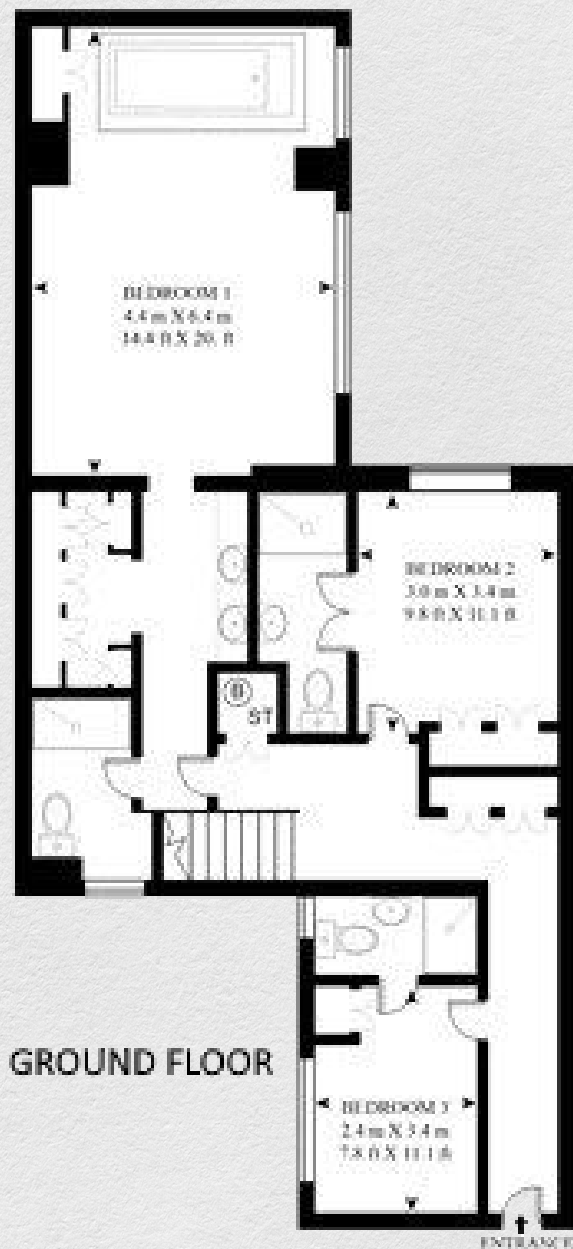
The ground floor comprises the sleeping quarters with 3 large bedrooms, all en-suite. Additionally, the magnificent master bedroom is equipped with a sunroof, walk in closet and an open plan Jacuzzi.

The first floor is the main living area with a very large open plan reception room leading onto the private terrace, the separate kitchen is fitted with all the modern appliances

Impressive artworks, chandeliers and designer furniture create the perfect ambiance and chic environment while a large outdoor balcony-terrace adds to the grandeur of the apartment with its Hanging Gardens of Babylon feature.

Westbourne Terrace is a street in the Paddington district of the City of Westminster in west London. The street runs between Westbourne Bridge in the north and the junction of Westbourne Crescent and Sussex Gardens in the south and was developed between 1839 and the late 1850s.





Address:

Westbourne Terrace, Paddington, London, W2

sq ft bed bath

1,910 3 4

*** For illustration purposes only. Could not be to scale. One-London aims to ensure accuracy but is not liable for any discrepancies.*