

## Hand Axe Yard, St Pancras, London WC1X

£6,100 pcm

- 3 bedrooms
- 2 bathrooms
- Semi-detached Townhouse
- Arranged over 3 floors
- 1,119 sq ft
- Fitted wardrobes.
- High spec fixtures & fittings
- 24-hour concierge
- Great transport links
- Easy access to the EuroStar.

*Spacious 3 double bedroom townhouse arranged over 3 floors part of the popular Hand Axe Yard development in St Pancras Place, Kings Cross.*

*This fully furnished home includes an inviting open plan living space, fitted kitchen with integrated appliances, designer furnishings, wood flooring, fitted wardrobes for the bedrooms and a modern bathroom. The inclusion of three terraces and a garden provide plenty of space to relax. Set within an exclusive development and surrounded by well-maintained gardens this executive townhouse is finished to an exceptional standard.*

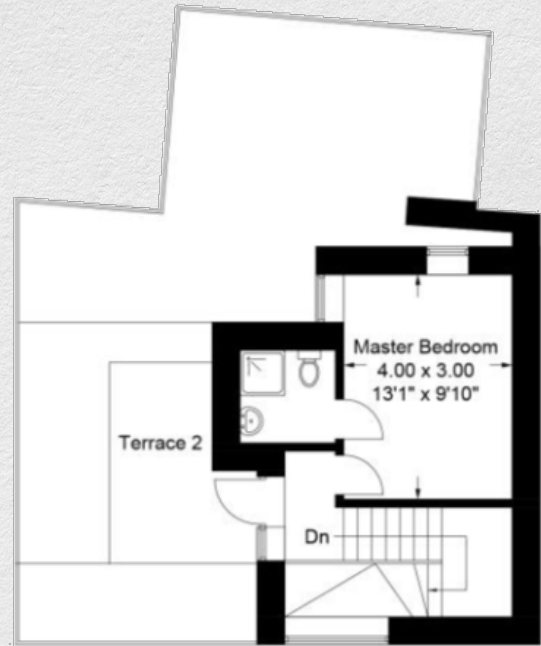
*The smart development enjoys a daytime concierge service, CCTV security, communal front yard and an exclusive on-site gym for residents' use. The townhouse boasts wooden flooring downstairs and comfortable carpet throughout the rest of the property with underfloor heating and air ventilation system as standard.*

*Hand Axe Yard is located off Gray's Inn Road giving you easy access to King's Cross underground, Euston and St Pancras overground stations. There is also an array of shops, bars and restaurants on your doorstep.*









First Floor



Lower Ground Floor



Ground Floor

Address:	sq ft	bed	bath
Hand Axe Yard, St Pancras, London WC1X	1,119	3	2

*\*\* For illustration purposes only. Could not be to scale. One-London aims to ensure accuracy but is not liable for any discrepancies.*