



Paddington Exchange, London W2

£1,280,000

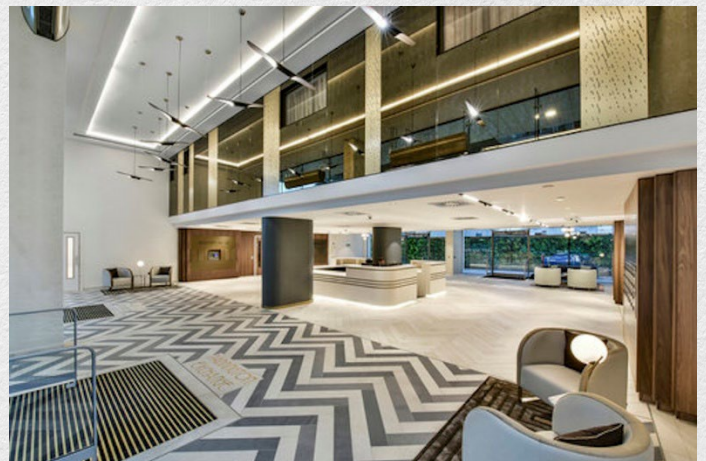
- New Build Development (completed 2017)
- 2 bedrooms
- 2 bathrooms
- 6th floor apartment
- 889 sq ft internal
- Parking included
- 69 sq ft private terrace
- Residents lounge
- Lift access
- Communal roof terrace & gardens
- 24 concierge

A west facing two bedroom, two bathroom apartment within a popular modern apartment building with 24hr concierge and lift access.

This immaculately presented sixth floor apartment is formed of principal bedroom with luxury en-suite bathroom, second bedroom, open plan kitchen / reception room with balcony access plus guest bathroom, storage and secure underground parking, interiors for this apartment have been curated by David Phillips Interiors – London.

Paddington Exchange offers 24hr concierge, residents' lounge, communal roof terrace, lifts and comfort cooling.

Conveniently located to major transport links, nearby stations include Paddington Station (Circle, District, Bakerloo, Hammersmith & City, National Rail, Heathrow Express). The Elizabeth Line also connects London east to west with a major hub at Paddington.





Address:

Paddington Exchange, London, W2

sq ft	bed	bath
889	2	2

*** For illustration purposes only. Could not be to scale. One-London aims to ensure accuracy but is not liable for any discrepancies.*