



Bermondsey Heights, London, SE15

£459,000

- Reassignment (Completes July 2025)
- 19th floor
- 1 bedroom
- 1 bathroom
- Private balcony with great views
- Approx. 474 sq ft
- Open plan dining area
- Ample storage
- 24-hour concierge
- Video door entry system

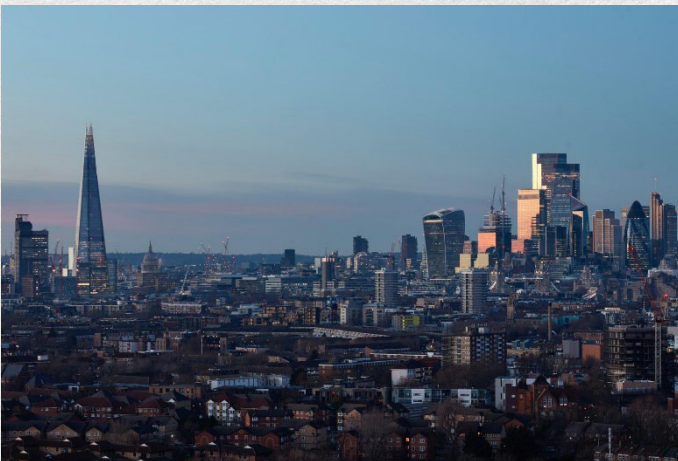
This one-bedroom apartment features modern, open plan living coupled with stylish interiors, ideally located within easy reach of the City. A reassignment property completing by July 2025.

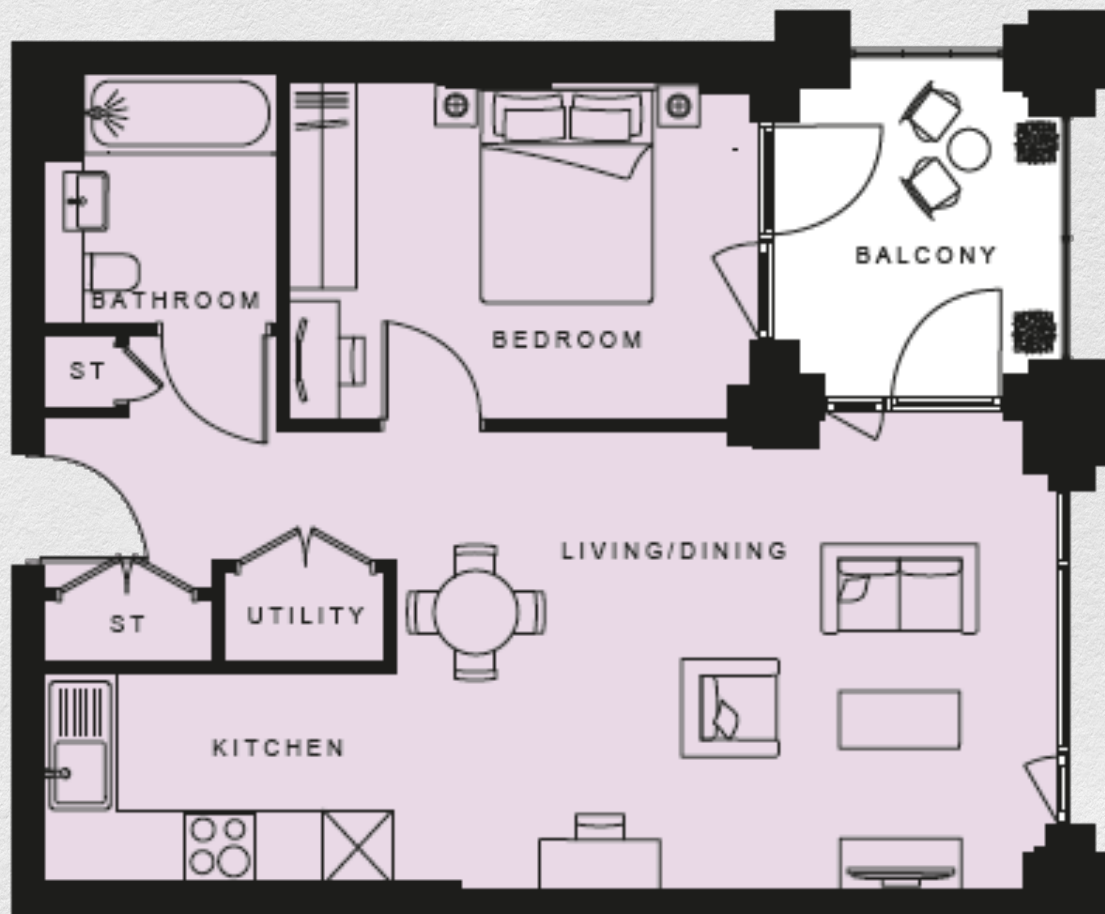
Individually designed contemporary kitchen with soft-close doors and drawers and integrated appliances. Amtico flooring in the hallway, kitchen and living/dining areas, and a clean tiled bathroom. A storage room and a separate utility area provides ample storage space.

The balcony is accessible from the living/dining area and the bedroom, great place to enjoy a morning coffee with great views from the 19th floor.

Upgraded Spec: Washer/Dryer, Wardrobe, Oak flooring in bedroom, Cabinet in bathroom included.

Additionally, there is a Video door entry system, superfast broadband connectivity (subject to subscription) and a Residents' concierge service





Address:

Bermondsey Heights, London, SE15

sq ft

bed

bath

474

1

1

*** For illustration purposes only. Could not be to scale. One-London aims to ensure accuracy but is not liable for any discrepancies.*