

## Merino Gardens, London Dock, Wapping, E1W

*£3,900 pcm*

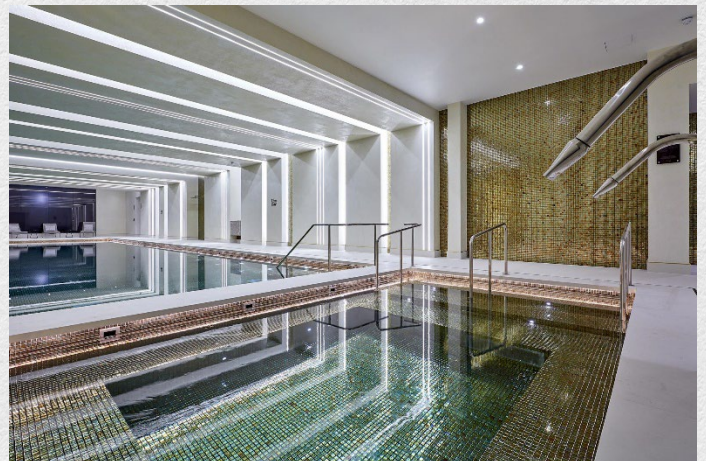
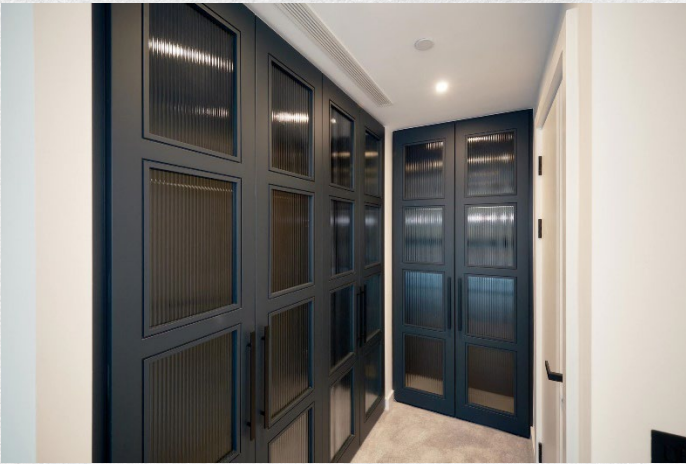
- Available 5<sup>th</sup> November 2024
- Fully furnished
- Two bedrooms
- Two bathrooms
- 874 SqFt
- Huge Terrace
- Integrated Miele Appliances
- 24 Hour Concierge
- Business Lounge
- Courtyard water garden
- Gymnasium & Pool
- Screening Room
- Lively central public piazza

*Located in Merino Gardens, this fully furnished apartment comprises of an open plan reception/dining area, huge terrace, kitchen with integrated appliances, two en-suite spacious bedrooms. Finished to an exquisite standard throughout.*

*Close proximity to an eclectic mix of cafes, bars, restaurants, and shops along Gauging Square and Pennington Street Warehouse provides endless entertainment and convenience. London Dock is just moments from the city's most famous landmarks, such as Tower Bridge and Tower of London, as well as central business and financial districts.*

*Tower Hill underground station and Tower Gateway DLR station are conveniently located within 10 minutes' walk, providing excellent transport connections, including a 4-minute journey to Monument, 4 minutes to Liverpool Street station, 12 minutes to King's Cross St Pancras International, 8 minutes to Canary Wharf, and an hour commute to Gatwick Airport.*









Address:

Merino Wharf, London Dock, Wapping, E1W

sq ft

bed

bath

874

2

2

*\*\* For illustration purposes only. Could not be to scale. One-London aims to ensure accuracy but is not liable for any discrepancies.*