



The Residences on Paddington Green, London, W2

£1,950,000

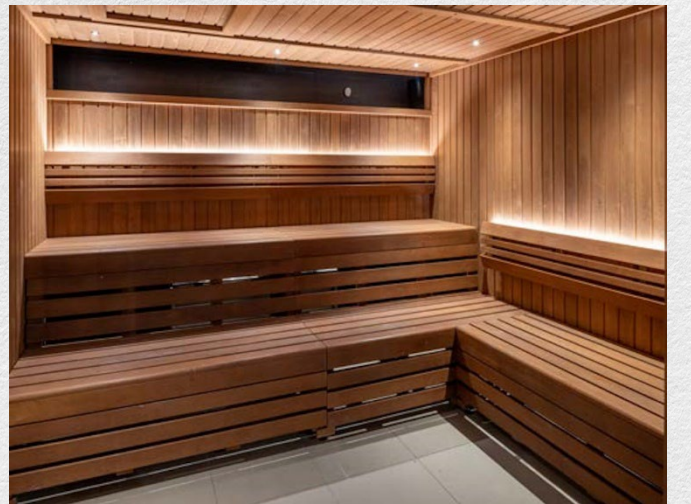
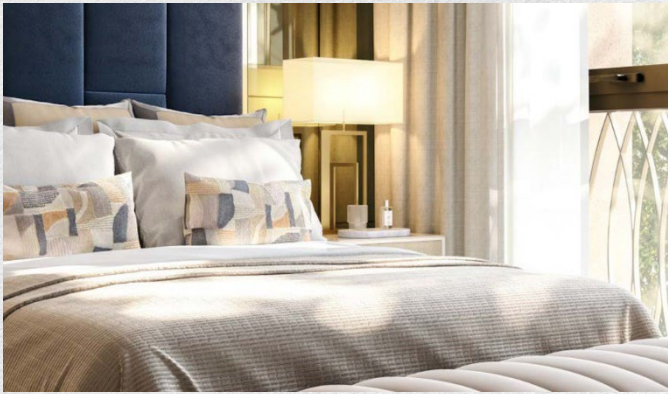
- Completion Jan – Jun 2026
- 3 bedrooms
- 2 bathrooms
- Private parking (separate negotiation)
- 2 balconies
- Ground floor with views into the residents' garden
- Spacious dining area
- 1,107 sq ft
- Luxury residents' facilities
- 24-hour concierge
- Great transport links

Large 3 bedroom, 2 bathroom ground floor apartment set in The Residence on Paddington Green, part of the West End Gate development. Private parking is also available by separate negotiation. Completion Jan – Jun 2026.

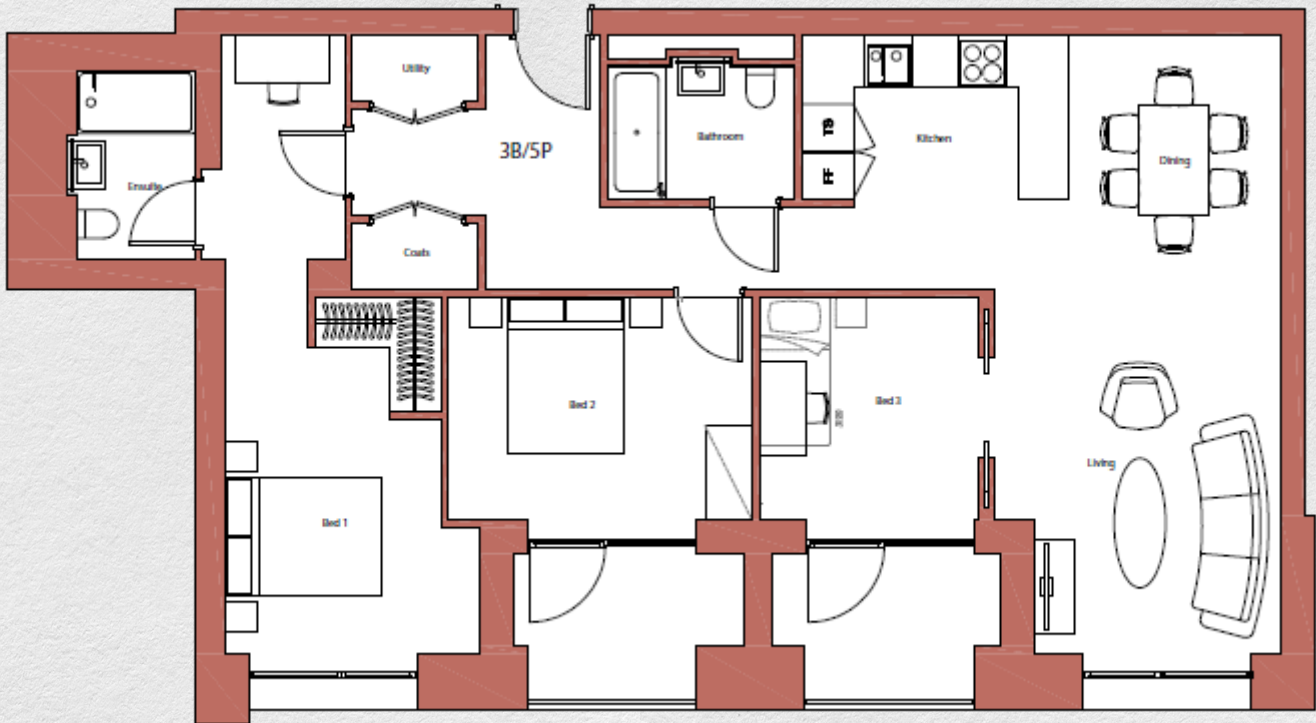
This 1,107 sq ft apartment comprises of a large open plan reception/kitchen/dining area, a utility room and coats wardrobe in the main hallway, en-suite master bedroom, 2 further bedrooms each with the own private balconies and a family bathroom.

The development benefits from 24HR concierge, secure underground parking, private resident's gym, pool and spa, cinema screening room, business lounge and resident's garden.

West End Gate is located close to the West End, Hyde Park and many transport links from Edgware Road and Paddington including the future Crossrail station for Elizabeth line trains.



The Residences on Paddington Green, London, W2



Level	Ground Floor	
Living/Kitchen/Dining	36.5m ²	392.8 sq ft
Bedroom 1	19.2m ²	206.7 sq ft
Bedroom 2	11.7m ²	125.9 sq ft
Bedroom 3	8.6m ²	92.5 sq ft
Total Internal Area	102.9m²	1,107.6 sq ft

Paddington Green

Residents' Garden

*** For illustration purposes only. Could not be to scale. One-London aims to ensure accuracy but is not liable for any discrepancies.*