



## Parkside apartments, Chelsea Bridge Wharf, London, SW11

£1,180,000

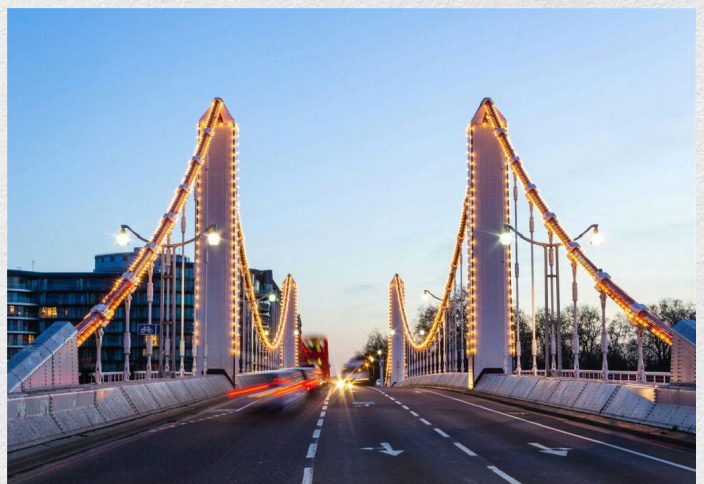
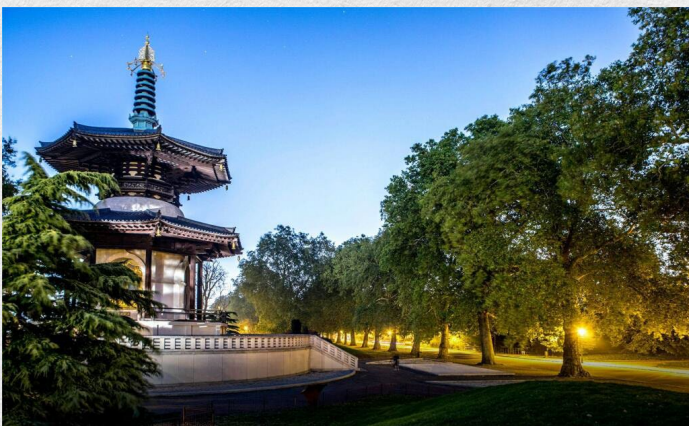
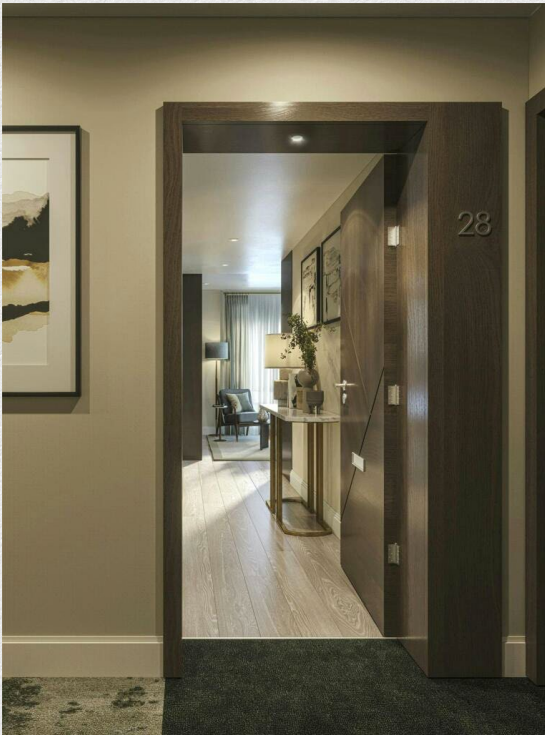
*This spacious 2-bedroom apartment situated in the highly sought after Parkside Development is both elegant and sophisticated.*

*The kitchen is made up of composite stonework surfaces and high-end appliances, including a oven/microwave and integrated fridge/freezer. The two large bedrooms open onto the spacious terrace with plenty of space to relax and entertain. Luxurious bathrooms are fitted with a white bath and bespoke stone resin basins, complemented by polished chrome fixtures.*

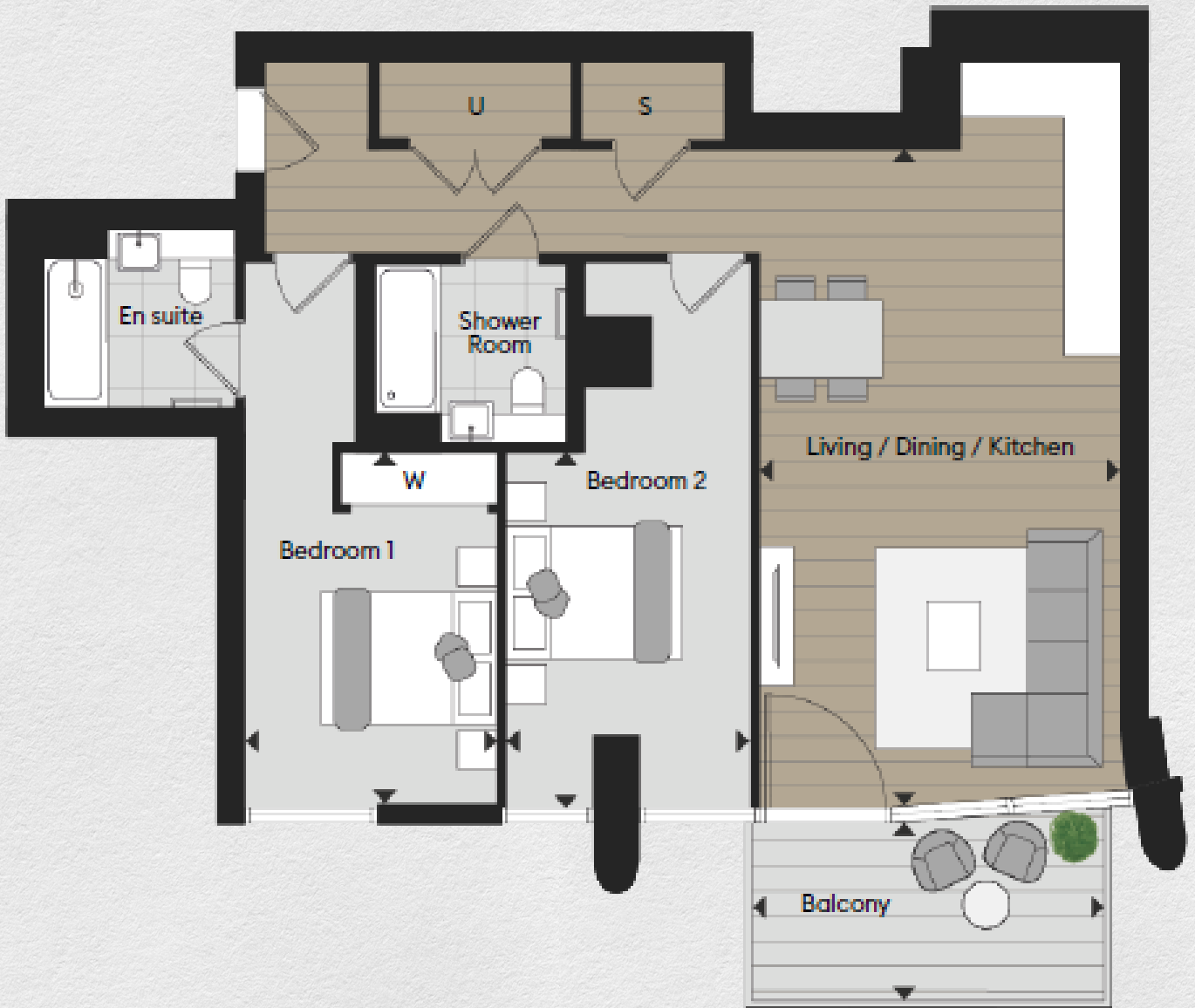
*Perfect ambient lighting throughout this apartment is created by the LED downlights and dimmer switches, creating a truly magical experience.*

*Nestled in a picturesque setting adjacent to the magnificent 200-acre Battersea Park, the Parkside Collection at Chelsea Bridge Wharf enjoys a truly desirable location. With an unparalleled retail experience next door at Battersea Power Station, visitors can choose from a curated selection of high-end boutiques, flagship stores, and unique concept shops. Alternatively, King's Road in Chelsea presents another enticing option with its array of upscale dining and fashionable offerings. The Parkside Collection at Chelsea Bridge Wharf offers residents a blend of natural beauty, riverside serenity, and exceptional shopping opportunities.*

- Parking available
- 2 bedroom
- 2 bathroom
- 944 sq ft living space
- Ground floor apartment
- Very Good Decoration
- Luxury residents' facilities
- Sought after location.
- 24-hour concierge



**TWO BEDROOM APARTMENT**



Address:

Parkside Apartments, Chelsea Bridge Wharf, London, SW11

sq ft    bed    bath

944    2    2

*\*\* For illustration purposes only. Could not be to scale. One-London aims to ensure accuracy but is not liable for any discrepancies.*