



Koa, Battersea Roof Gardens, London, SW11

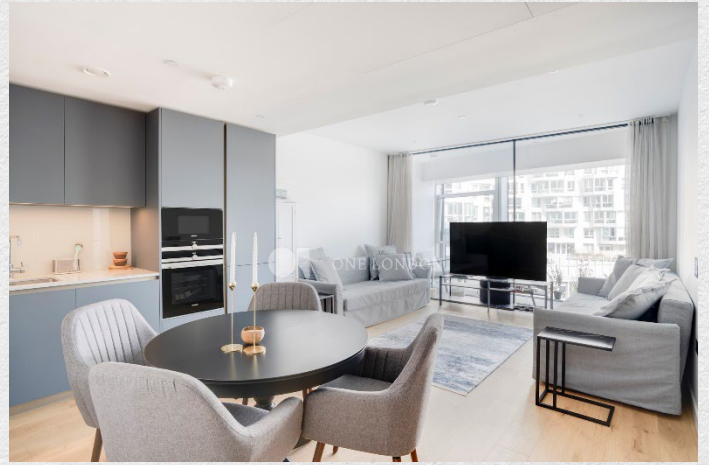
£975,000

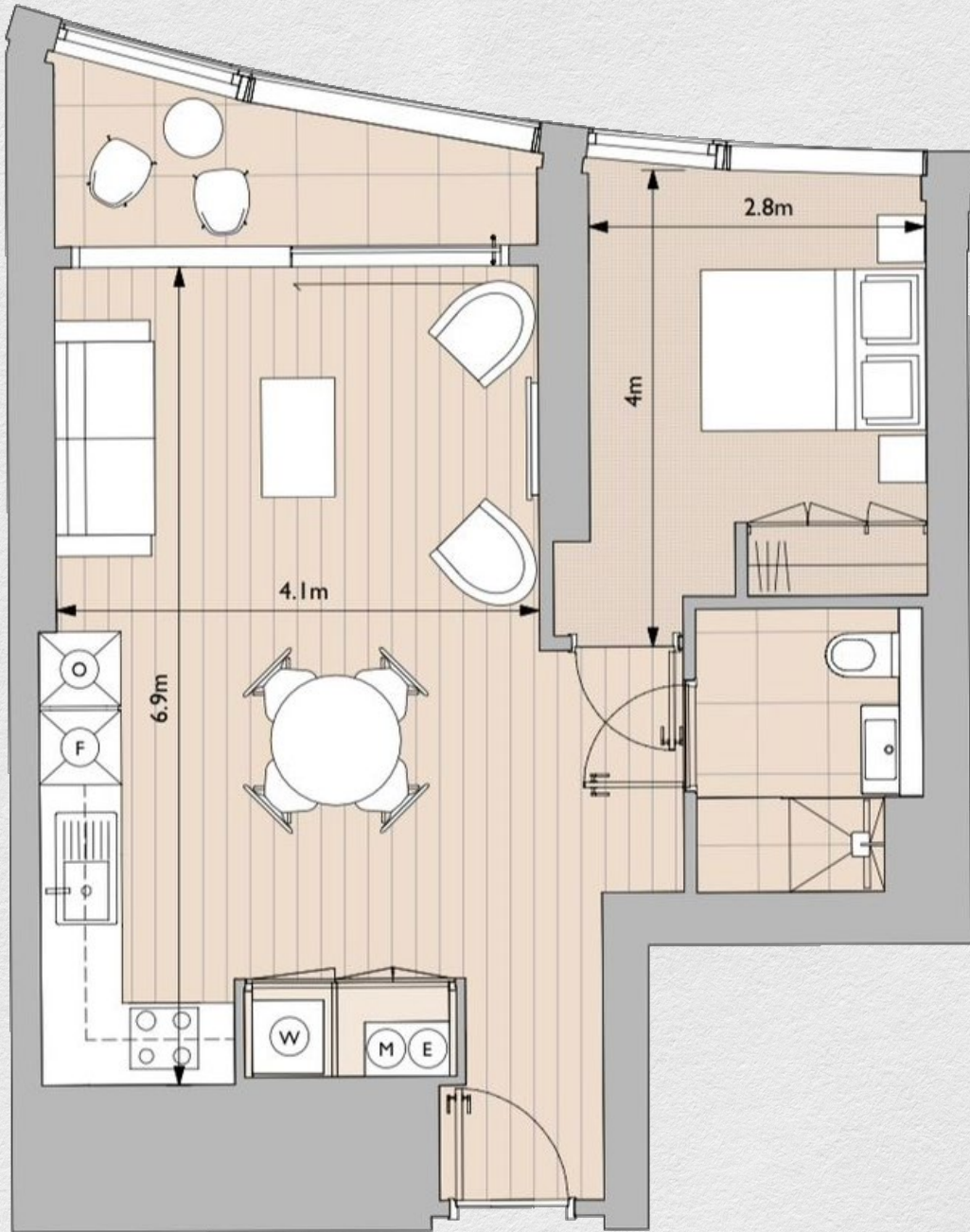
- 3rd floor
- 1 bedroom
- 1 bathroom
- Fitted wardrobes
- 52 sq ft private balcony
- Spacious dining area
- 552 sq ft
- Spectacular views
- Luxury residents' facilities
- Highly sought after location.
- 24-hour concierge
- Great transport links

Brand new 1 bedroom, 1 bathroom apartment with a contemporary and fresh design within the latest phase of Battersea Power Station, one of central London's largest, most visionary regeneration projects.

The apartment is full of character and excitement with fresh, modernist references bringing sophistication, combined with top quality finishes and considerable natural light through the conservatory and large windows. A large open plan living area leading onto the private conservatory offers spectacular views of the Power Station ideal for both entertaining or unwinding.

The private Sky Lounge on the 14th and 15th floors offers stunning views, a Sunset Bar, workspaces, and a gym with great views. Koa at Electric Boulevard adds vibrancy to the Battersea Power Station neighbourhood with shops, dining, entertainment, wellness centres, and an art'otel.





Address:

Koa, Battersea Roof Gardens, London, SW11

	sq ft	bed	bath
<i>internal</i>	552	1	1
<i>balcony</i>	52		
<i>total</i>	604		

** For illustration purposes only. Could not be to scale. One-London aims to ensure accuracy but is not liable for any discrepancies.