



Pico House, Battersea Powers Station, London, SW11

£8,000 pcm

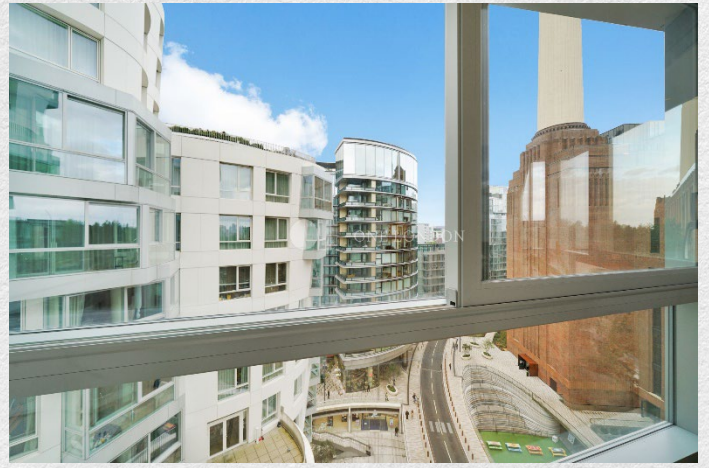
- Available now
- 9th floor
- Unfurnished
- 3 bedrooms
- 3 bathrooms
- Private winter garden
- Panoramic views of Battersea Power station
- Residents Gym, pool, spa
- 1,599 sq ft
- Communal gardens
- Sought after location
- 24 hour concierge
- Great transport links

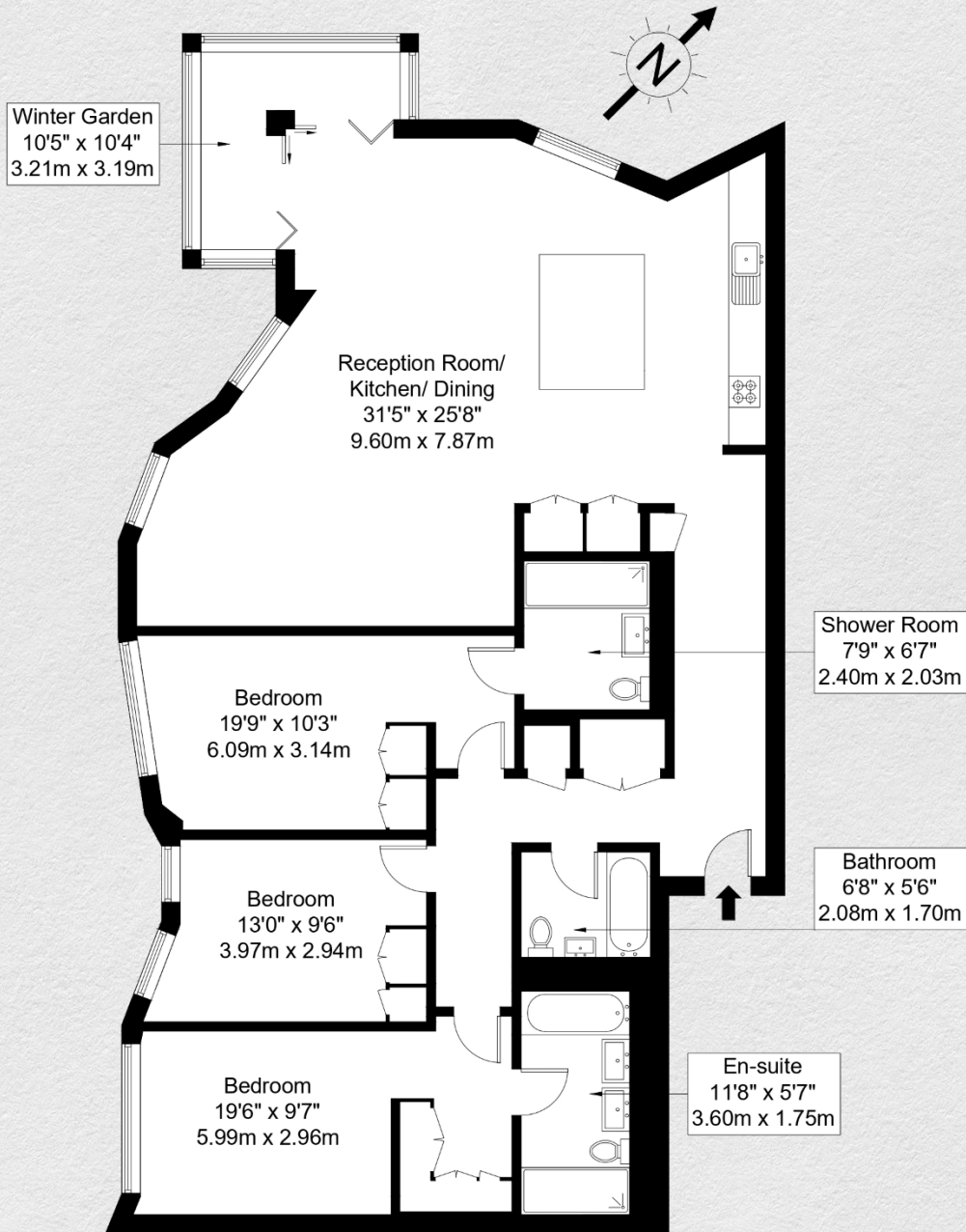
Incredible 3 bedroom, 3 bathroom apartment located on the 9th floor in Prospect Place at the highly sought after Battersea Power Station development is now available.

This 1,599 sq ft apartment is equipped with all modern facilities and amenities needed to complement a comfortable lifestyle including herringbone wood flooring.

The apartment boasts fabulous views and features a generously sized winter garden. The thoughtfully conceived floor plan provides a harmonious blend of relaxation and entertainment spaces, featuring an open plan, fully fitted kitchen with a wine fridge, and spacious living room. Adding to its prestige, this accommodation is fitted with climate-controlled comfort throughout and underfloor heating. The bedrooms have luxurious furnishings with fitted wardrobes, the principal bedroom comprises a dressing area and en suite bathroom with a bath and a separate shower. The second bedroom has an en suite, and there is a third, separate bathroom,

This apartment is perfect for anyone seeking a luxurious living experience in a prime location. With its modern facilities, spacious living areas, and breathtaking views, it offers the perfect combination of comfort and style





Ninth Floor

Address:	sq ft	bed	bath
Pico House, Battersea Power Station, London, SW11	<i>internal</i> 1,599	3	3
	<i>winter garden</i> 65		
	<i>total</i> 1,664		

** For illustration purposes only. Could not be to scale. One-London aims to ensure accuracy but is not liable for any discrepancies.