



## 101 Cleveland Street, Fitzrovia, London, W1T

£2,300,000

- New development
- 3 bedrooms
- 3 bathrooms
- 1,131 sq ft
- Spacious reception area
- Private balcony
- 6th floor
- Luxury residents' facilities
- Sought after location
- 24 hour concierge
- Podium landscaped gardens

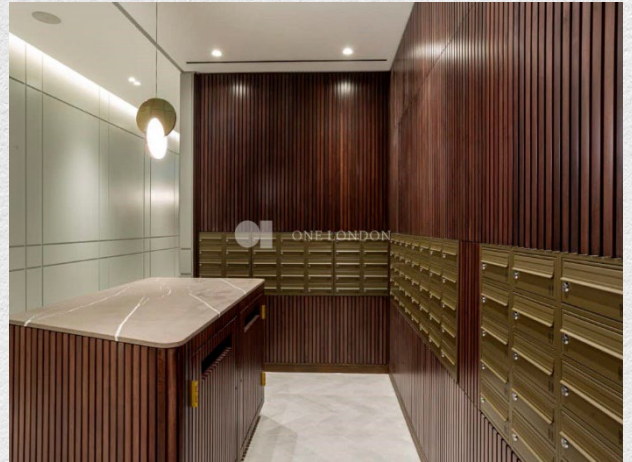
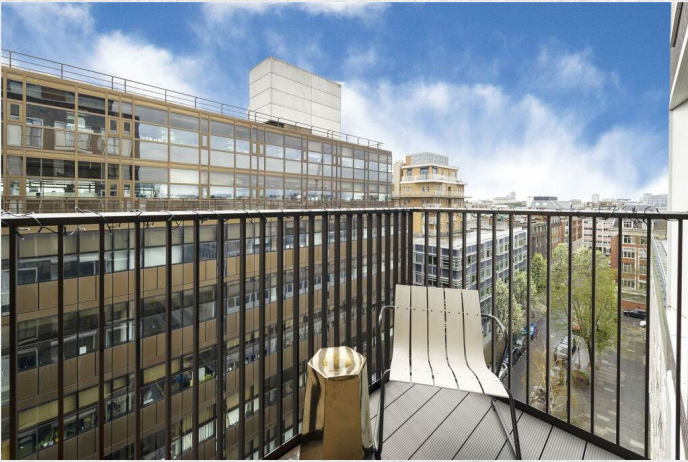
*New large 3 bedroom, 3 bathroom flat on the sixth floor of a luxury, new-build development in the heart of Fitzrovia.*

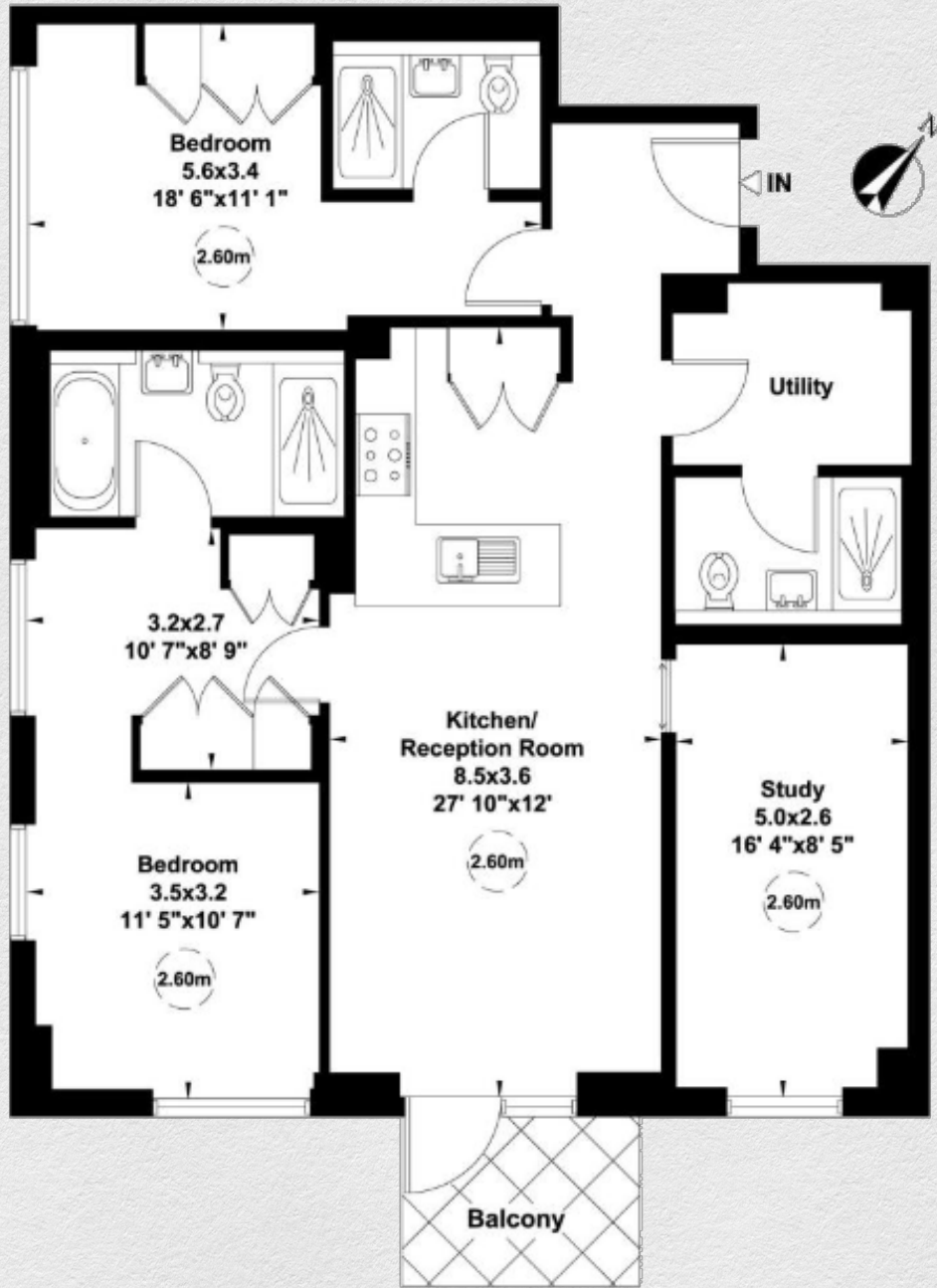
*The open plan kitchen and reception room offers spectacular far-reaching views and an abundance of natural light. The apartment further benefits from underfloor heating as well as comfort cooling and a private balcony.*

*101 on Cleveland is a new residential development located in the heart of Fitzrovia, W1. The completed building has been designed by award winning architectural and interior design practice Assael.*

*Residents will benefit from a wide range of amenities including 24-hour concierge, private dining room, residents' bar and lounge, screening room, gym, sauna and steam room.*

*The development is perfectly placed to benefit from London's vibrant culture and burgeoning art scene. From shopping on Bond Street and Oxford Street, to dining at some of the city's best restaurants, to peaceful walks in Regent's Park. There is something for everyone.*





Address:

101 Cleveland Street, Fitzrovia, London, W1T

sq ft

bed

bath

1,131

3

3

*\*\* For illustration purposes only. Could not be to scale. One-London aims to ensure accuracy but is not liable for any discrepancies.*