



Merchant Square, Paddington Basin, W2

£1,320,000

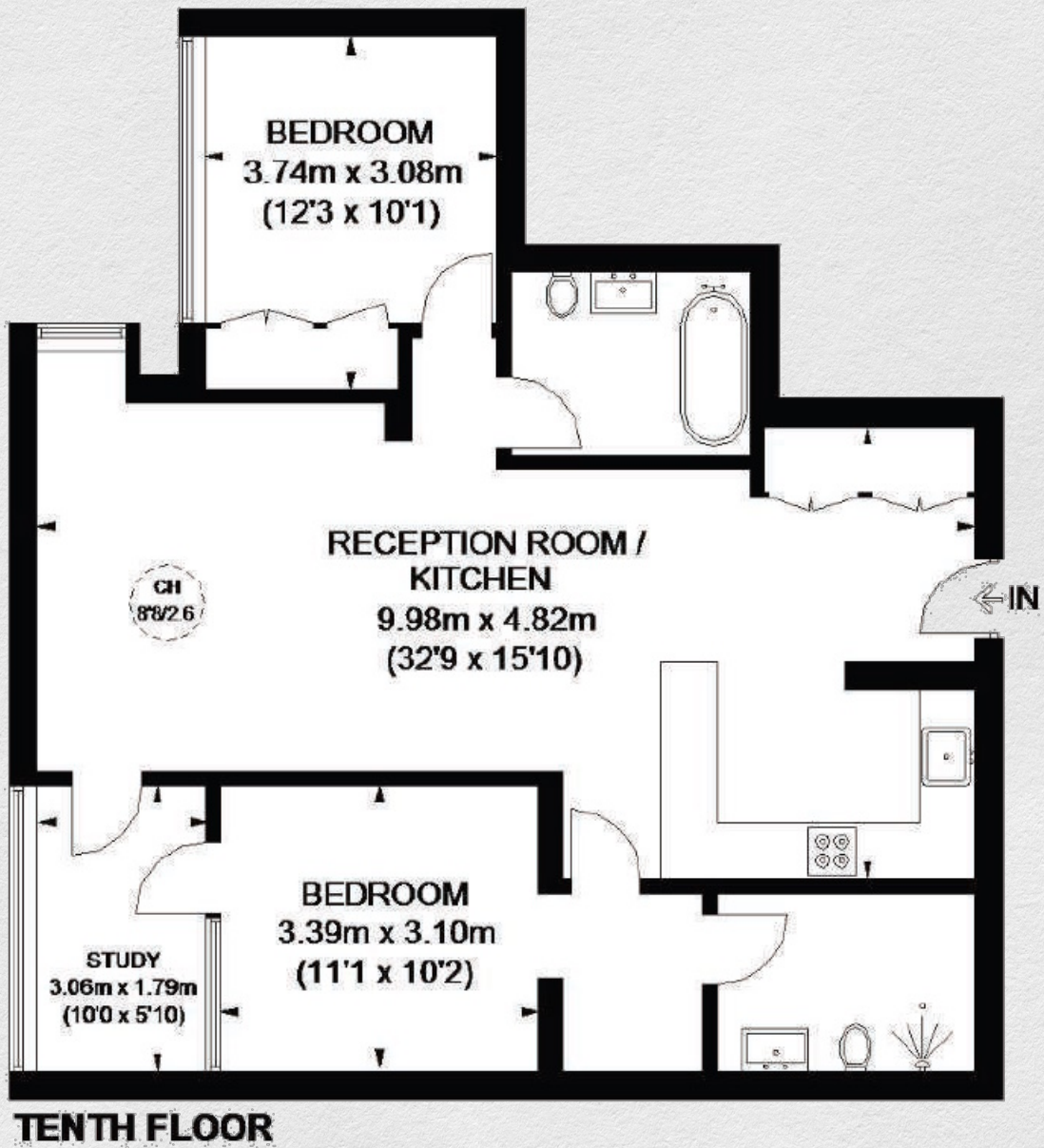
- 2 bedrooms
- 2 bathrooms
- 935 sq ft
- 10th floor
- Winter balcony
- Residents Lounge and Cinema
- Comfort cooling
- 24 hour concierge

Located on the 10th floor of the most popular and luxurious blocks in Paddington Basin is this luxurious two-bedroom, two bathroom apartment with winter garden.

This apartment has a reception room with an open plan kitchen featuring Miele appliances and a breakfast bar. The main bedroom is en-suite, with a second bedroom and a guest bedroom, ideal for having friends & family stay over. A study room and a winter garden complete this great property.

Excellent transport links with Edgware Road (Circle, District and Bakerloo lines), Paddington Station (Bakerloo, Hammersmith & City, Circle, District lines), National Rail and Heathrow Express, the new CrossRail/Elizabeth Line, Lancaster Gate and Marble Arch (Central line).





Address:

Merchant Square, Paddington Basin, London, W2

sq ft

bed

bath

935

2

2