



## The Hat Factory, Soho, London, W1F

£2,299,995

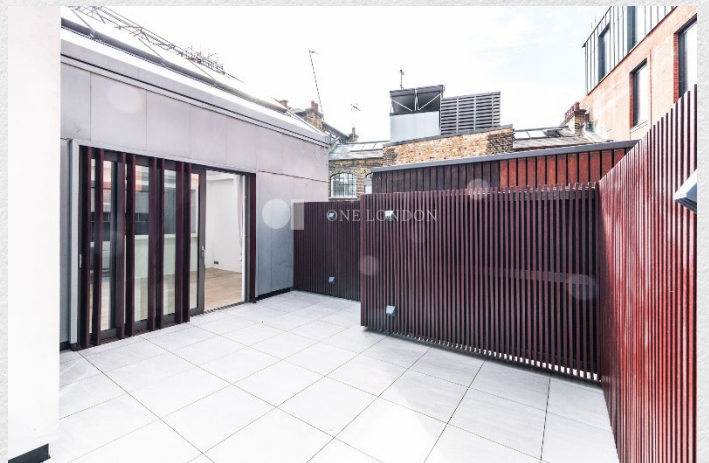
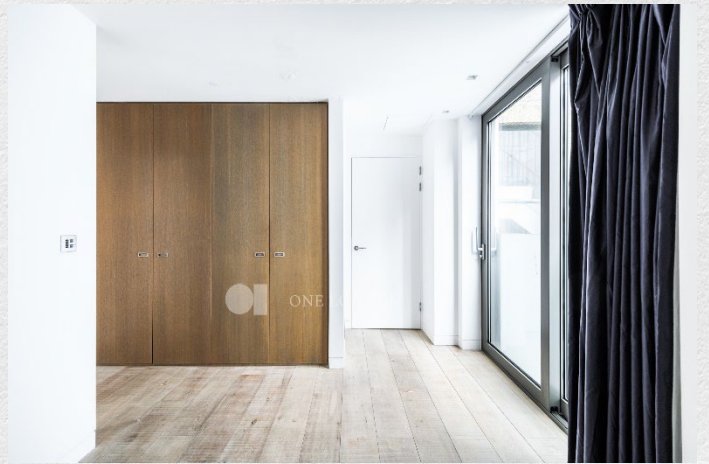
- 2 large bedrooms
- 2 bathrooms
- 1,151 sq ft
- Large private terrace
- Vaulted ceiling
- Converted factory
- Loft style apartment
- Desirable location
- Vibrant area
- Great transport links

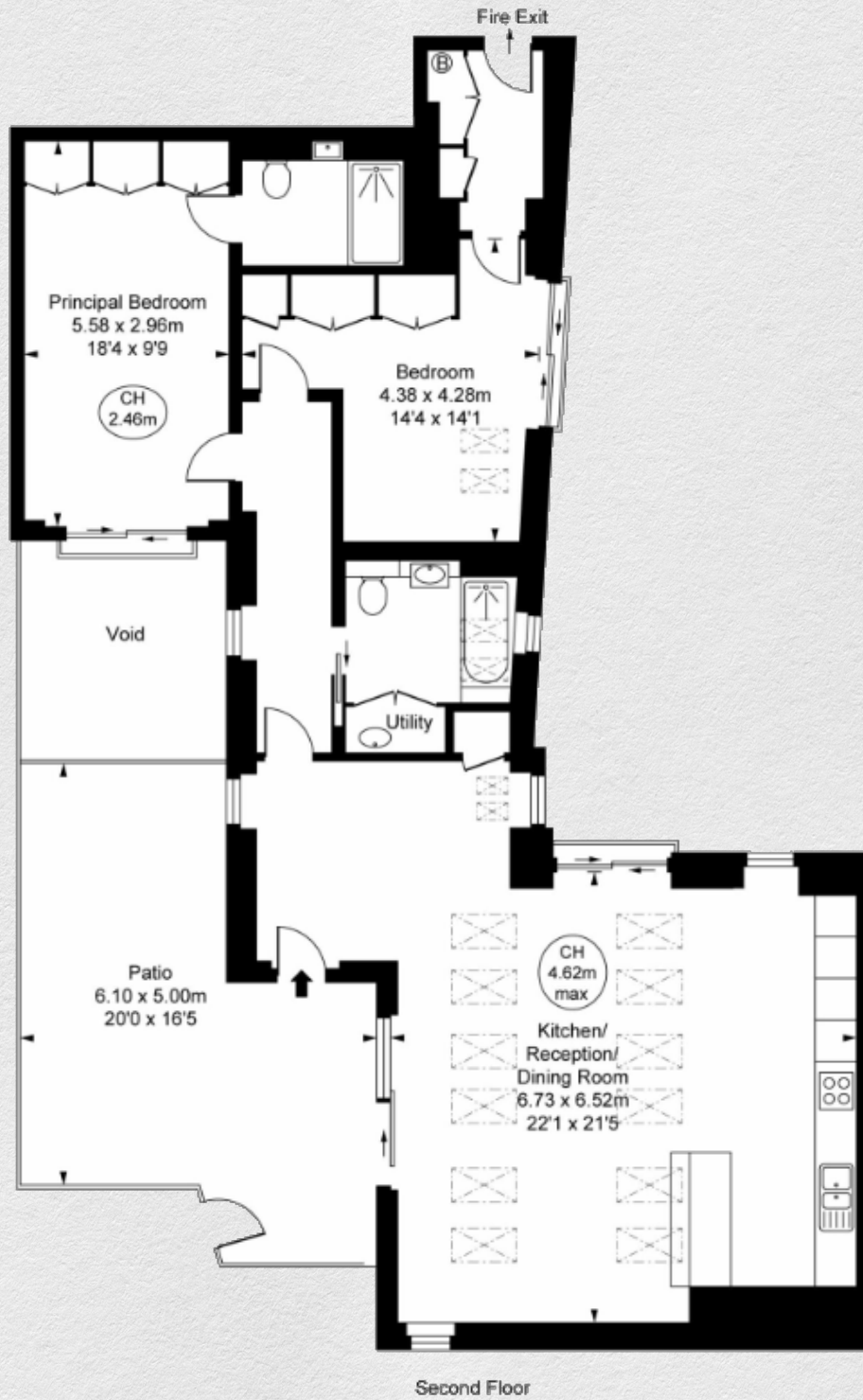
*Superb two-bedroom loft style apartment in this unique development, The Hat Factory in Soho.*

*The property consists of a large open plan reception room with dining area and a fully fitted integrated kitchen, a large private terrace, en-suite master bedroom with fitted wardrobes, a second double bedroom also with fitted wardrobes and a luxury bathroom. Further benefits include an impressive double height vaulted ceiling, comfort cooling, underfloor heating and private entrance.*

*The Hat Factory apartments are the result of the reshaping of two Victorian factory buildings of historical significance, fusing the heritage of the past in eight stylish loft style apartments right in the heart of the vibrant West End.*

*Moments from the many amenities of Oxford Circus and Tottenham Court Road, including excellent transports links.*





Second Floor

Address:

The Hat Factory, Soho, London, W1F

| sq ft | bed | bath |
|-------|-----|------|
| 1,151 | 2   | 2    |

\*\* For illustration purposes only. Could not be to scale. One-London aims to ensure accuracy but is not liable for any discrepancies.