



## 19<sup>th</sup> floor, One Blackfriars, London, SE1

£6,900 pcm

- 19<sup>th</sup> floor with spectacular views
- 2 large bedrooms
- 2 bathrooms
- 1,033 sq ft
- Large private sky garden
- Wrap around conservatory
- Sought after location.
- 24hr Harrods Estates concierge
- 32nd Floor Residents' Lounge with views of St Paul's
- Great transport links

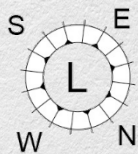
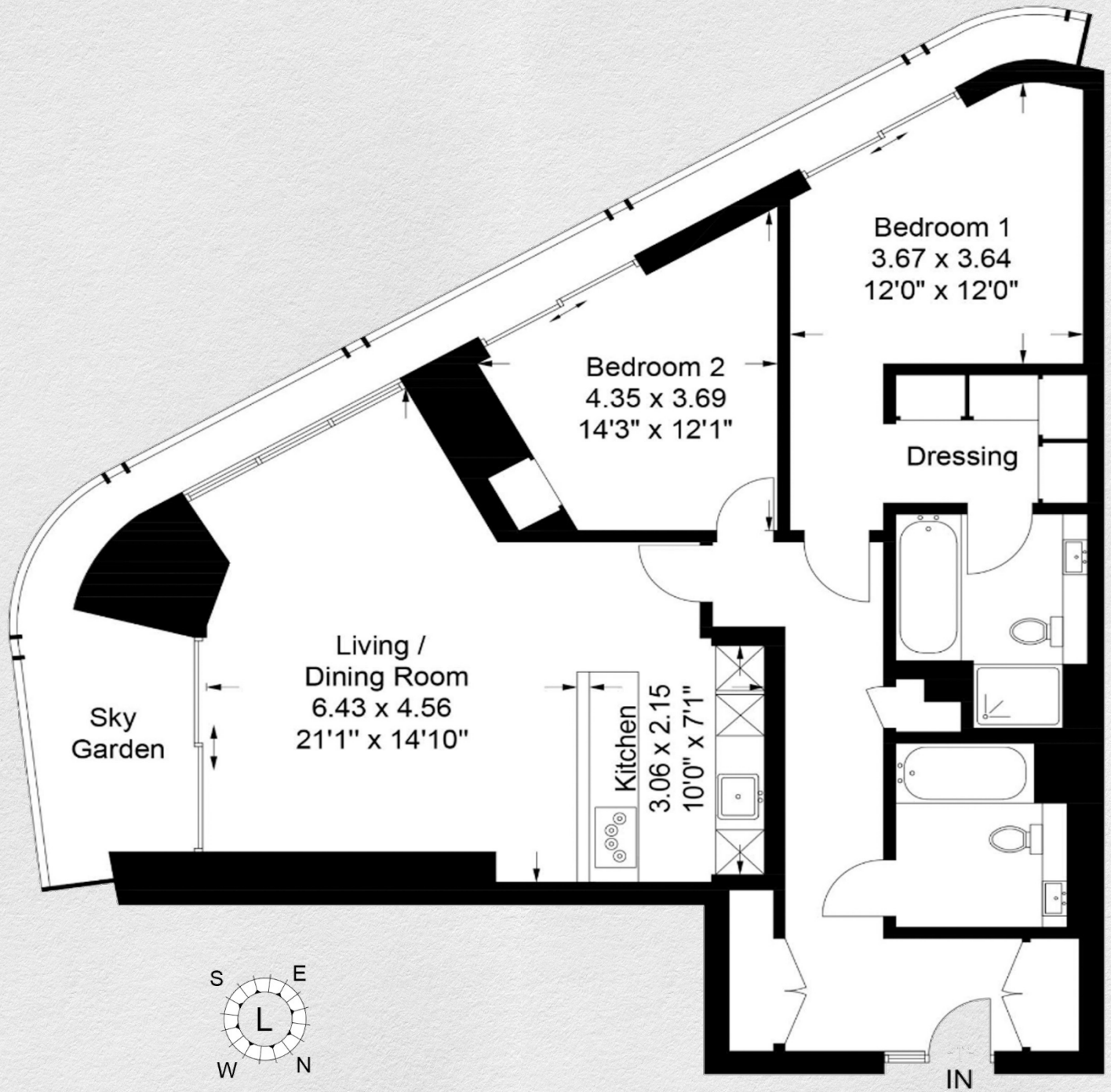
*Stunning 19th floor, 2 bedroom, 2 bathroom apartment with a large private sky garden on the banks of the River Thames adjacent to Blackfriars Bridge.*

*This apartment features a bright, spacious open-plan luxury kitchen and reception area, two double bedrooms, the principal with a dressing area and ensuite bathroom. The wrap around conservatory provides breathtaking views of London.*

*Residents benefit from facilities only found in the world's finest hotels. They include a 24/7 Harrods Estates concierge service, a 32nd-floor executive lounge with panoramic views of the London skyline, a bar and kitchen for private catering, an executive lounge, a golf simulator, a wine cellar and tasting room, a private screening room, a thermal suite with mood lighting and sound, a snow cabin and ice fountain, a 20-metre swimming pool, a state-of-the-art gymnasium, a private Zen garden for relaxation and yoga, and a fully equipped spa where residents can indulge in treatments or reserve exclusivity for personal therapists.*

*The nearby stations provide access to various lines, including Jubilee, District and Circle, Bakerloo, Northern, Waterloo and City, and London Overground services. Blackfriars Station, an architectural masterpiece itself, offers a River Taxi stop and convenient connections to the Farringdon Crossrail interchange for express trains.*





Address:	sq ft	bed	bath
19 <sup>th</sup> floor, One Blackfriars, London, SE1	1,033	2	2

*\*\* For illustration purposes only. Could not be to scale. One-London aims to ensure accuracy but is not liable for any discrepancies.*