

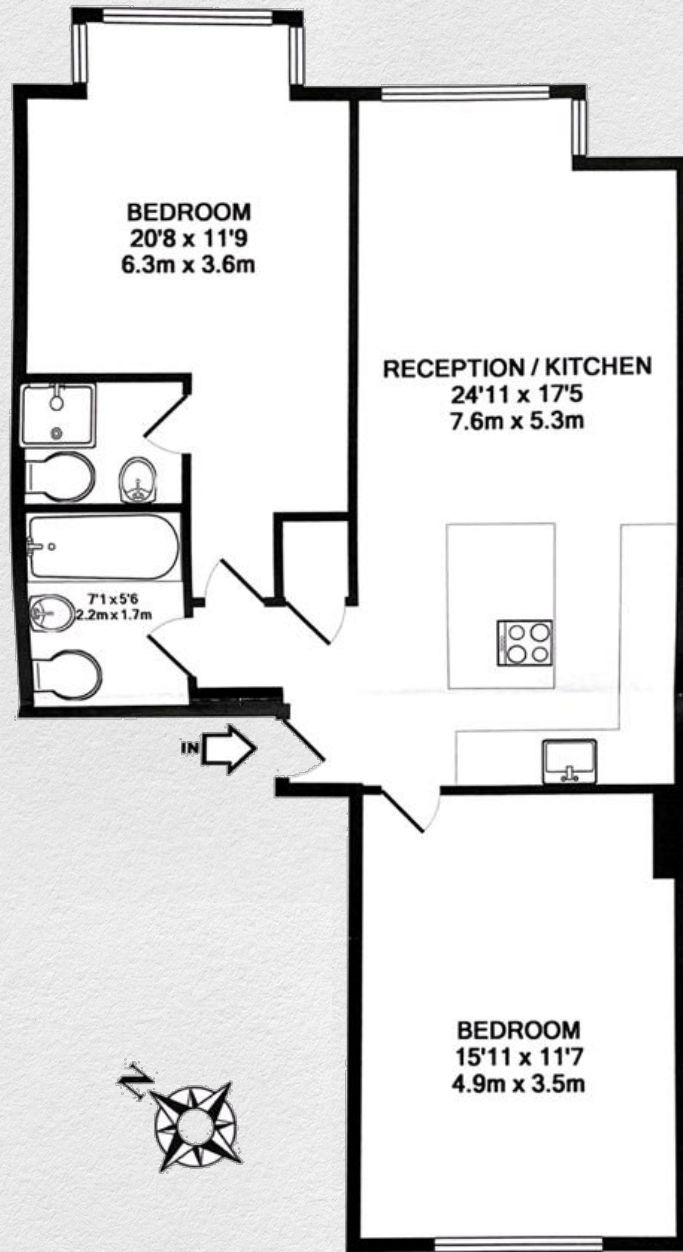


Lisson Grove, Westminster, London, NW1

£685,000

- Currently rented until March 2025
 - 2 bedroom
 - 2 bathrooms
 - Spacious dining area
 - 745 sq ft
 - 3th floor
 - Luxury residents' facilities
 - 24-hour concierge
 - Great transport links
- Large 2 bed 2 bath apartment situated on the third floor of this popular, purpose-built, gated development, located within easy reach of Marylebone & Baker Street Station.*
- The accommodation comprises generous bedroom sizes, with bright open plan reception room with fully equipped kitchen with kitchen island.*
- Additional benefits include a communal garden, residents pool and gym, as well as 24-hour security. The apartment is currently rented till March 2025*
- Portman Gate is conveniently located within easy walking distance of both Marylebone railway station and Baker Street underground station (Metropolitan, Jubilee, Bakerloo, Hammersmith & City).*





Address:

Lisson Grove, Westminster, London, NW1

sq ft bed bath

745 2 2

*** For illustration purposes only. Could not be to scale. One-London aims to ensure accuracy but is not liable for any discrepancies.*