



## Oakley House, Battersea Roof Gardens, London

offers in excess of  
£525,000

- Studio apartment
- 408 sq ft
- Private balcony
- Residents Lounge and Cinema
- Gym, spa, pool, sauna
- 24 hour concierge
- Sought after location
- Great transport links
- Vibrant area

*Modern studio apartment with a contemporary and fresh design within a phase of Battersea Power Station, one of central London's largest, most visionary regeneration projects. Offered unfurnished.*

*The apartment is full of character and excitement with fresh, modernist references bringing sophistication, combined with top quality finishes and considerable natural light through the balcony and large windows.*

*Ideal for entertaining, this stunning apartment offers a generous amount of external space providing amazing views. Ready to move in.*

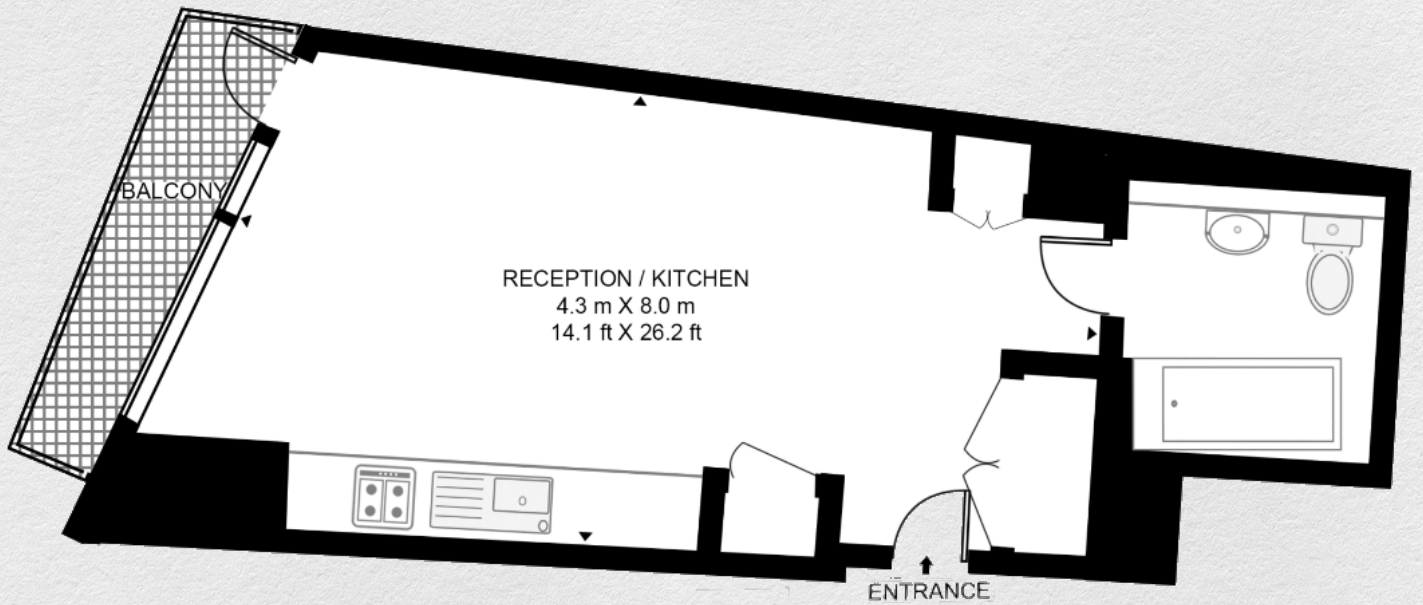
*A vibrant new destination for London, housing a community of homes, shops, cafes, offices, leisure, and cultural venues, with over 19 acres of public space.*

*Situated on the River Thames, the apartment is ideally located for Chelsea, Battersea Park and the tube, rail and Thames Clipper transport links nearby.*









Address:

Oakley House, Battersea Roof Gardens, London

sq ft

408

bed bath

studio

*\*\* For illustration purposes only. Could not be to scale. One-London aims to ensure accuracy but is not liable for any discrepancies.*