



## Pilot Walk, Greenwich, London, SE10

£535,000

- Back on the market
- 7<sup>th</sup> floor apartment with great views
- 1 bedroom
- 1 bathroom
- Spacious open plan living area
- 552 sq ft internal
- Large 180 sq ft balcony
- Residents Gym, Meeting Room
- 16 Seater Cinema
- Great location.
- 24-hour concierge

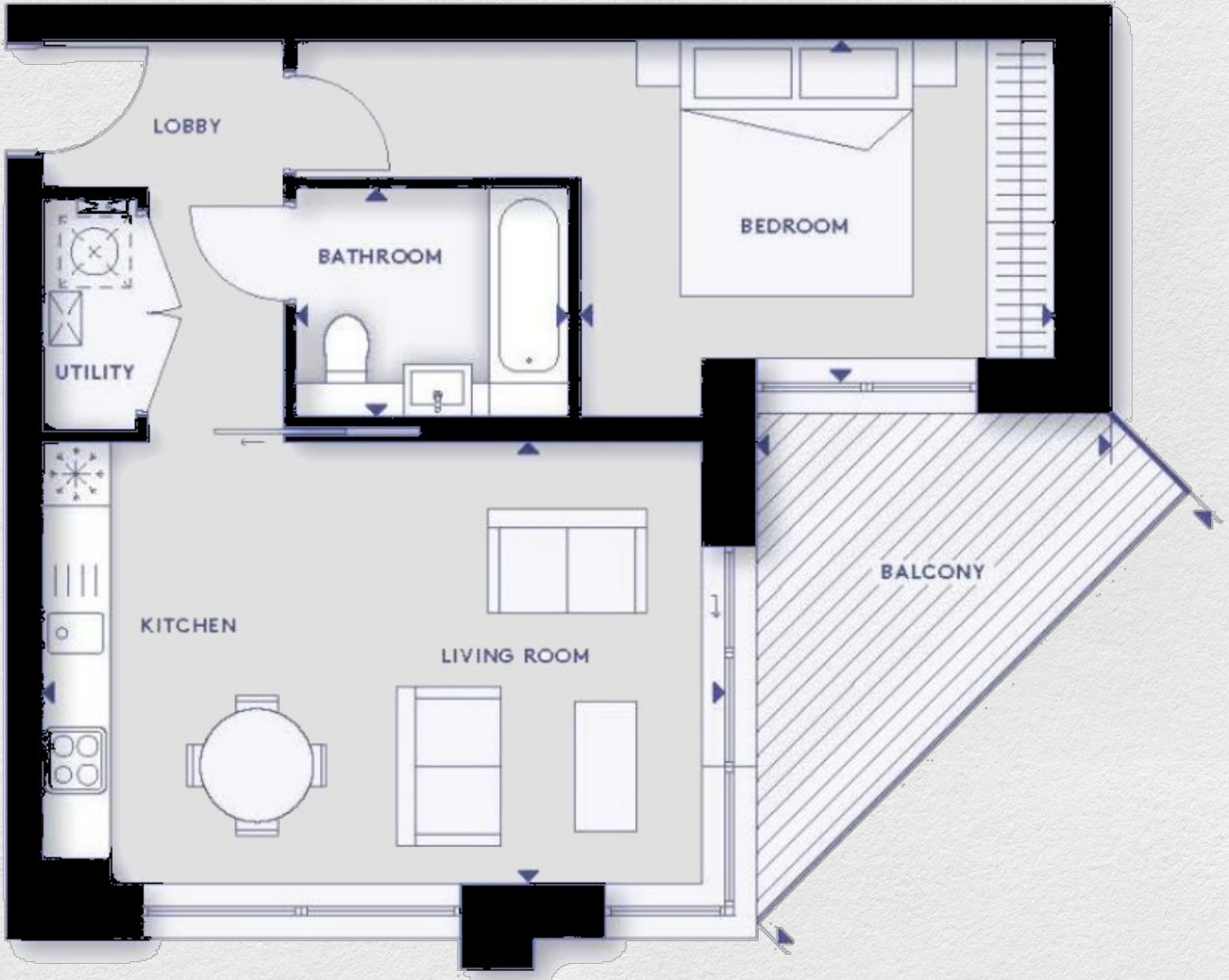
*Back on the market, this stunning river views, this chic 7th floor 1 bed (552 sq ft) apartment is set along the Thames, it offers amazing views from your living room and bedroom, stylish open-plan layout, a large decked outdoor balcony (180 sq ft) offering a space to relax. The 17th floor residents roof terrace provides even more spectacular views across London*

*Make the most of a whole host of amenities at the neighbourhood's resident hub, Aperture. Here, you'll find shared workspaces, a private gym, cinema and 17th floor roof terrace.*









Address:	sq ft	bed	bath
Pilot Walk, Greenwich, London, SW10	552	1	1

*\*\* For illustration purposes only. Could not be to scale. One-London aims to ensure accuracy but is not liable for any discrepancies.*