



## 9 Millbank, London, SW1

£6,800 pcm

*Luxurious 2 bedroom apartment in the prestigious 9 Millbank on the banks of the River Thames*

- 2 large bedrooms
- 2 bathrooms
- 1,017 sq ft
- Private east facing balcony
- Luxury residents' facilities
- Prestigious location
- 24 hour concierge
- Excellent transport links

*This large 1,017 square foot apartment has a large living room and open plan kitchen, the large master bedroom is en-suite with fitted wardrobes and the second bedroom is also spacious with fitted wardrobes. A store room provide ample storage.*

*Within the exclusive new development there are excellent residents' amenities including a Gym, Swimming pool, spa and treatments room, cinema room and 24hr concierge.*

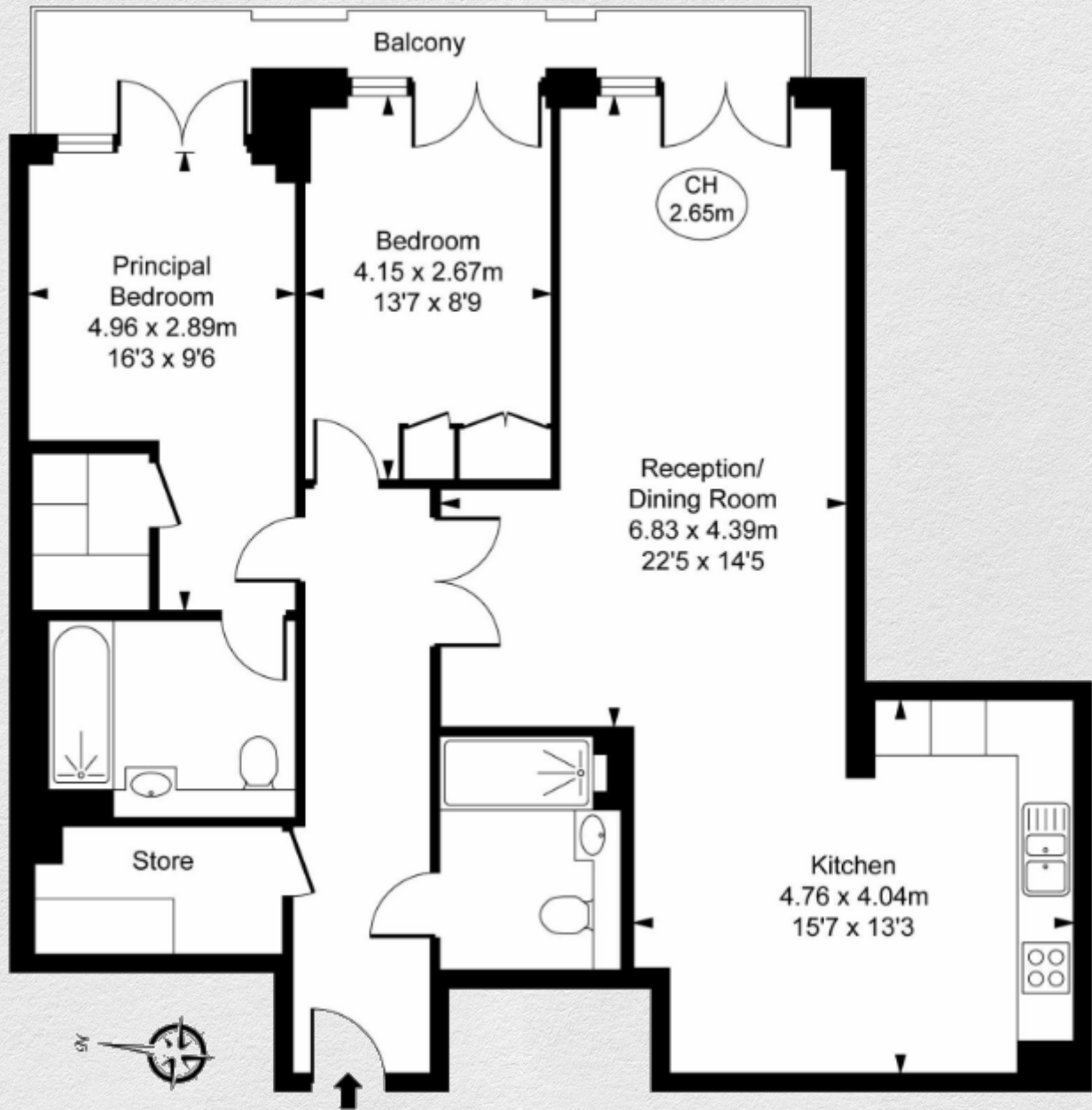
*For residents' comfort, all properties in 9 Millbank have underfloor heating throughout, and comfort cooling to all reception rooms and bedrooms.*

*Millbank is fantastically located near to the theatres of the West End, amenities of Knightsbridge, and wonderful local restaurants. There are excellent educational institutions nearby as well as the transport links of Westminster, Victoria, St James Park and Pimlico Underground and National Rail Stations.*









Address:	sq ft	bed	bath
9 Millbank, Westminster, London, SW1	1,017	2	2

*\*\* For illustration purposes only. Could not be to scale. One-London aims to ensure accuracy but is not liable for*