



One Park Drive, Canary Wharf, London, E14

£648 pw

- Available 29th July
- Luxury 1 bedroom apartment
- High floor
- Breath taking views
- 24hr Concierge
- Finest Canary Wharf Living
- World class residents' amenities
- Meticulously designed apartment
- Gym, swimming pool, library, media room and lounge
- Short Walk from Jubilee, Elizabeth & DLR Stations

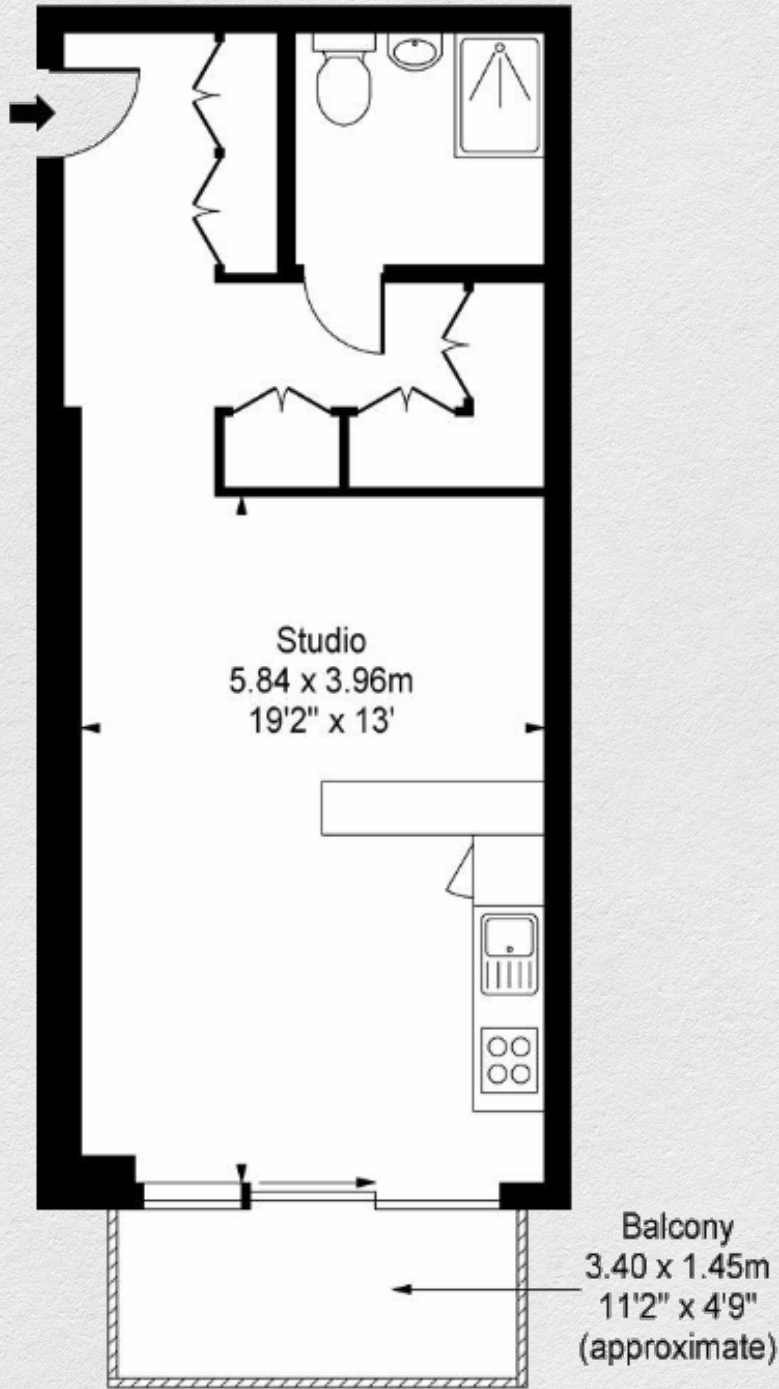
Luxury 1 bedroom apartment on a high floor with breath taking views over the River and City. Situated in the heart of Canary Wharf and finished to a very high specification with fantastic views.

Comprising an open plan kitchen living area with stylish divider to create an intimate sleeping space, abundance of storage, shower room and private terrace. Spectacular views across the surrounding gardens and river.

Residents of One Park drive benefit from World class leisure facilities including 24hr concierge, lounge, library and cinema. The 20-metre lap pool, gym, studio space and spa are all located on the first floor boasting stunning views across the dock and gardens.

Connectivity couldn't get any better with Canary Wharf Station a short walk away for access to the Elizabeth Line, Jubilee Line, Docklands Light Railway giving access into The City, Central London and London City Airport. Canary Wharf has an abundance of open spaces, shops, bars and restaurants, everything you'll ever need is on your doorstep.





Address:	sq ft	bed	bath
One Park Drive, Canary Wharf, London, E14	<i>approx.</i> 419	1	1

*** For illustration purposes only. Could not be to scale. One-London aims to ensure accuracy but is not liable for any discrepancies.*