

Merino Gardens, London Dock, Wapping, E1W

£2,250,000

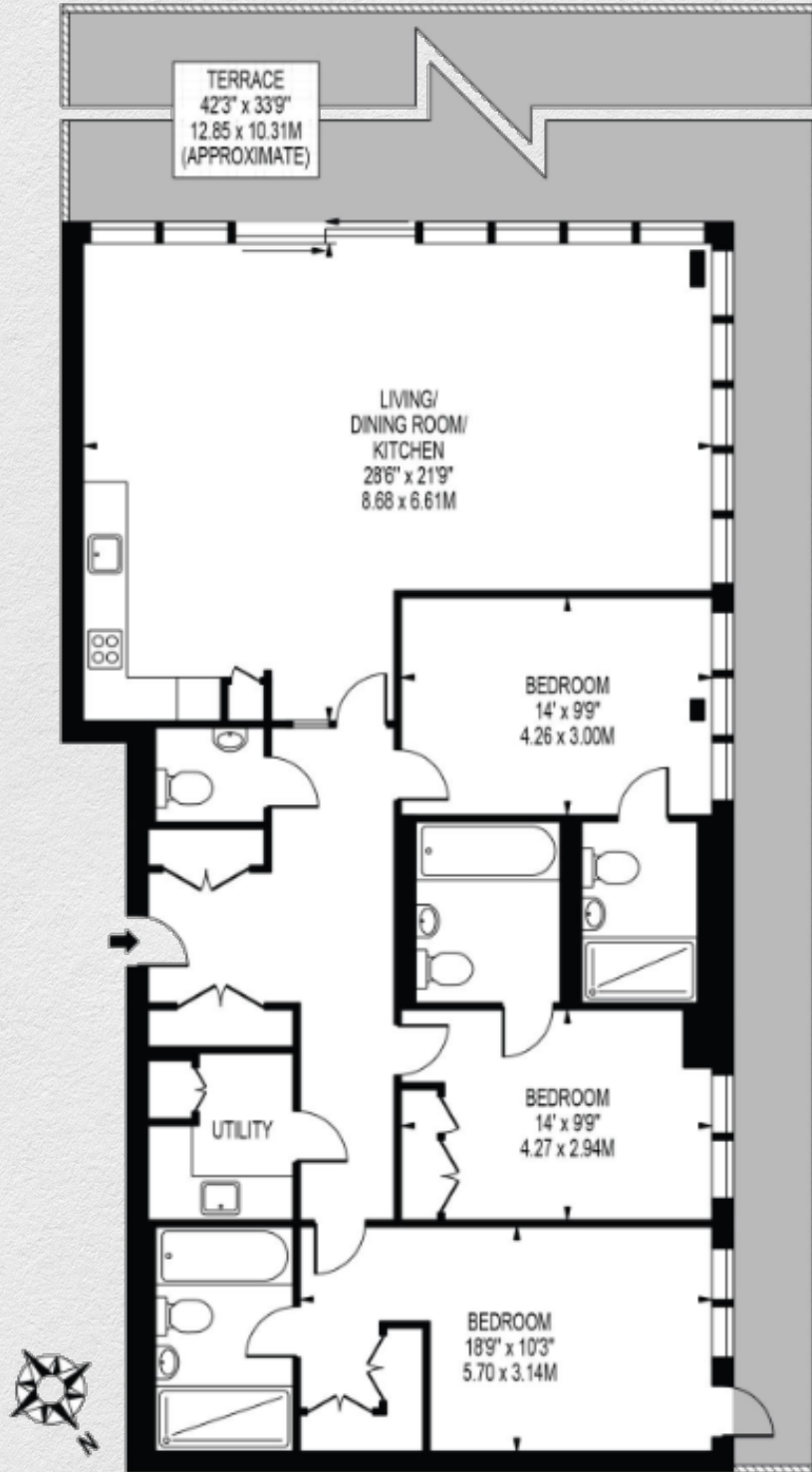
- Three bedrooms
- Three bathrooms
- 1,452 SqFt
- Huge Terrace
- Integrated Miele Appliances
- South facing view
- 24 Hour Concierge
- Business Lounge
- Gymnasium
- Screening Room
- Lively central public piazza

Located in Merino Gardens, comprising of an open plan reception/dining area, huge wrap-around terrace, kitchen with integrated appliances, three spacious bedrooms and three luxury bathrooms plus a guest toilet. Finished to an exquisite standard throughout.

Close proximity to an eclectic mix of cafes, bars, restaurants, and shops along Gauging Square and Pennington Street Warehouse provides endless entertainment and convenience. London Dock is just moments from the city's most famous landmarks, such as Tower Bridge and Tower of London, as well as central business and financial districts.

Tower Hill underground station and Tower Gateway DLR station are conveniently located within 10 minutes' walk, providing excellent transport connections, including a 4-minute journey to Monument, 4 minutes to Liverpool Street station, 12 minutes to King's Cross St Pancras International, 8 minutes to Canary Wharf, and an hour commute to Gatwick Airport.





Address:

Merino Gardens, London Dock, Wapping, E1W

sq ft bed bath

1,452 3 3

*** For illustration purposes only. Could not be to scale. One-London aims to ensure accuracy but is not liable for any discrepancies.*