



Merino Gardens, London Dock, Wapping, E1W

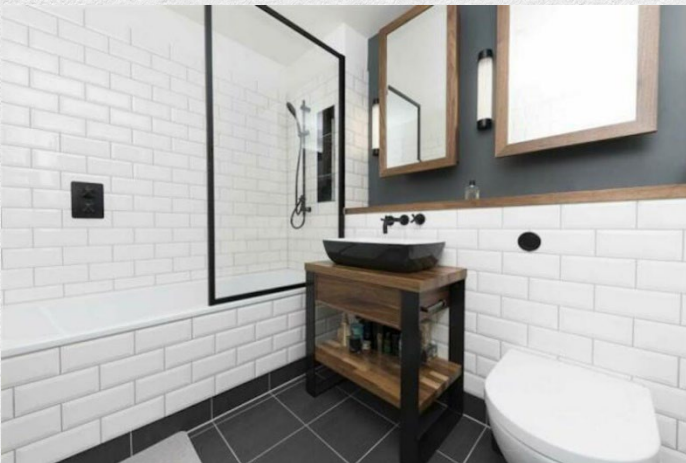
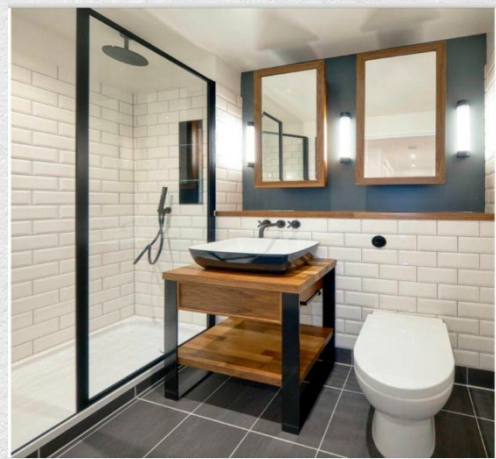
£1,300,000

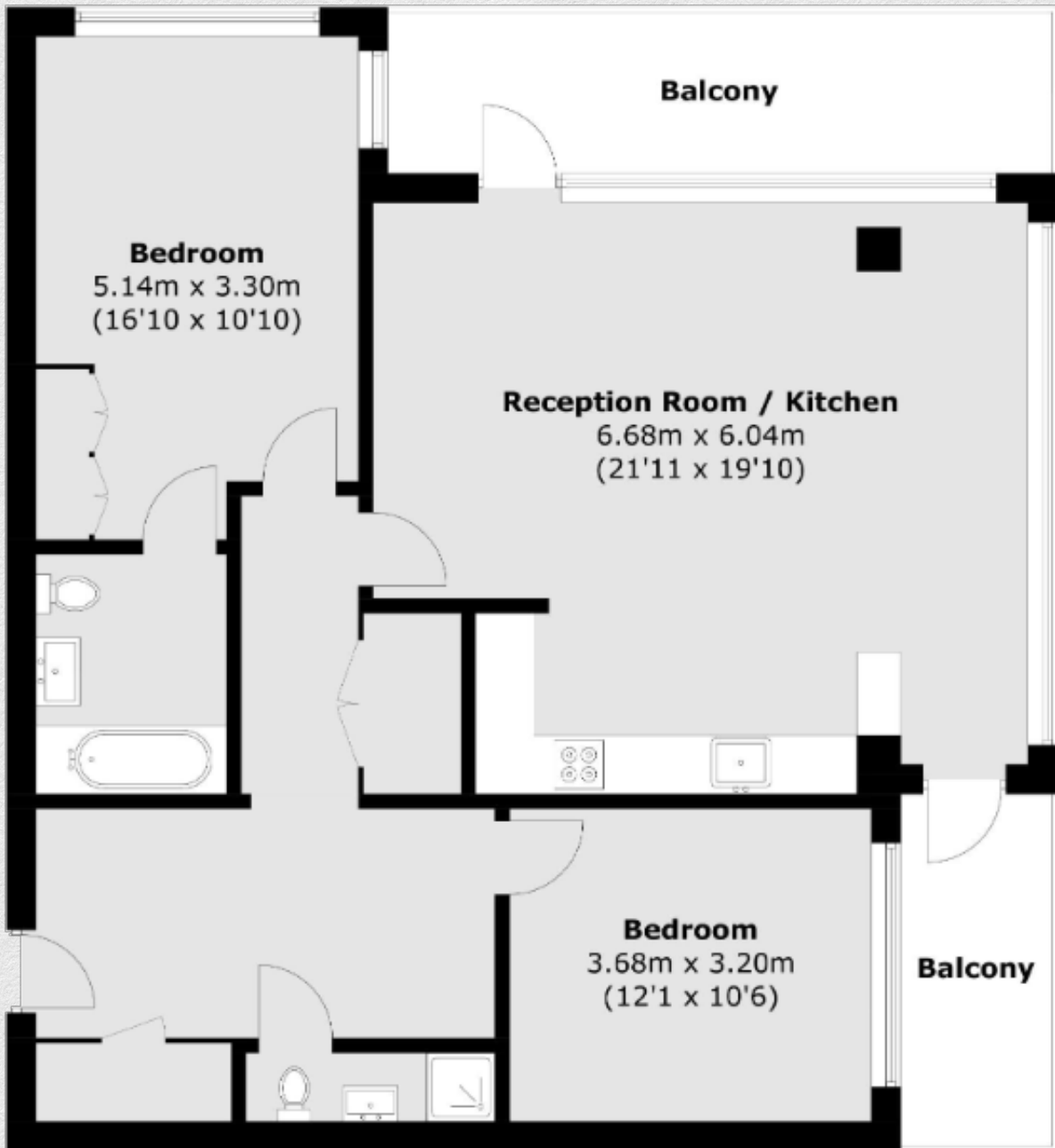
- Two bedrooms
- Two bathrooms
- 960 SqFt
- 2x Private balcony
- Integrated Miele Appliances
- 24 Hour Concierge
- Business Lounge
- Gymnasium
- Screening Room
- Lively central public piazza

A sophisticated two bedroom, two bathroom apartment with an impressive open plan reception room with dual aspects, floor to ceiling windows/doors offering stunning views onto the tranquil water gardens. The accommodation comprises a fully fitted kitchen with top of the range appliances, wooden Herringbone flooring, two double bedrooms both with access to an en suite bathroom, plenty of storage and the principal bedroom offering a smart dressing area.

Close proximity to an eclectic mix of cafes, bars, restaurants, and shops along Gauging Square and Pennington Street Warehouse provides endless entertainment and convenience. London Dock is just moments from the city's most famous landmarks, such as Tower Bridge and Tower of London, as well as central business and financial districts.

Tower Hill underground station and Tower Gateway DLR station are conveniently located within 10 minutes' walk, providing excellent transport connections, including a 4-minute journey to Monument, 4 minutes to Liverpool Street station, 12 minutes to King's Cross St Pancras International, 8 minutes to Canary Wharf, and an hour commute to Gatwick Airport.





Address:	sq ft	bed	bath
Merino Gardens, London Dock, Wapping, E1W	960	2	2

*** For illustration purposes only. Could not be to scale. One-London aims to ensure accuracy but is not liable for any discrepancies.*