



Westmark Tower, West End Gate, London, W2

£670,000

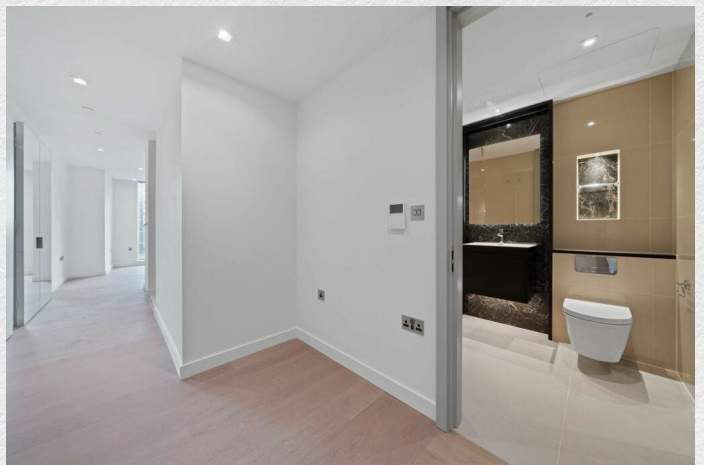
- Studio apartment
- 4th floor
- 437 sq ft
- Video entry system
- Sleek and modern design
- Integrated appliances
- 24 hr Concierge
- Private Gym, Pool & Spa
- Cinema screening room
- Secure cycle storage
- Vibrant area
- Excellent transport links

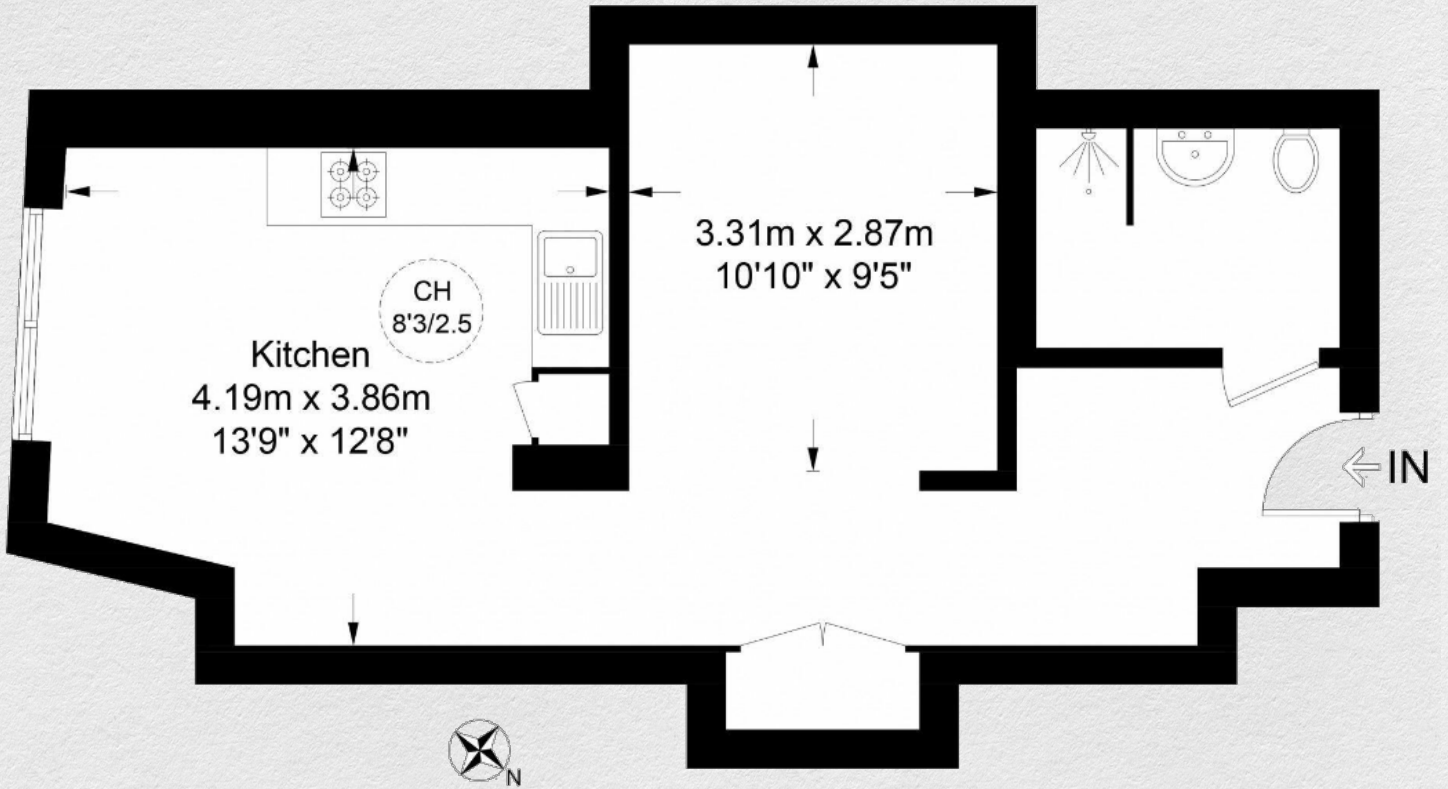
New 4th floor studio apartment set within Westmark Tower, part of the sought after West End Gate development, nearby all the amenities of central London.

This property has a sleek and modern design aesthetic that creates an inviting atmosphere throughout. The property is offered fully furnished, offering a move-in-ready solution for those seeking a hassle-free relocation. For those with specific tastes, the option for an unfurnished arrangement is also available, allowing for personal touches to be added. The fully fitted kitchen with its integrated appliances adds to the functional aspect of this apartment.

The development benefits from 24HR concierge, private resident's gym, pool and spa, cinema screening room, business lounge and resident's garden.

West End Gate is located close to the West End, Hyde Park and many transport links from Edgware Road and Paddington including the future Crossrail station for Elizabeth line trains.





Address:

Westmark Tower, West End Gate, London, W2

sq ft

437

bed/bath

studio

*** For illustration purposes only. Could not be to scale. One-London aims to ensure accuracy but is not liable for any discrepancies.*