



## 101 Cleveland Street, Fitzrovia, London, W1T

£8,666 pcm

*Brand new large 3 bedroom, 3 bathroom apartment located within a luxury, new development in the heart of Fitzrovia.*

- New development
- 3 bedrooms
- 3 bathrooms
- 1,132 sq ft
- Private balcony
- Landscaped gardens
- Luxury residents' facilities
- Sought after location
- 24 hour concierge

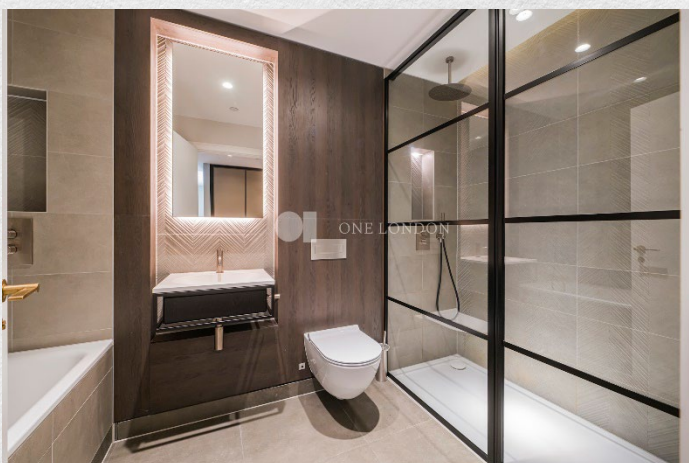
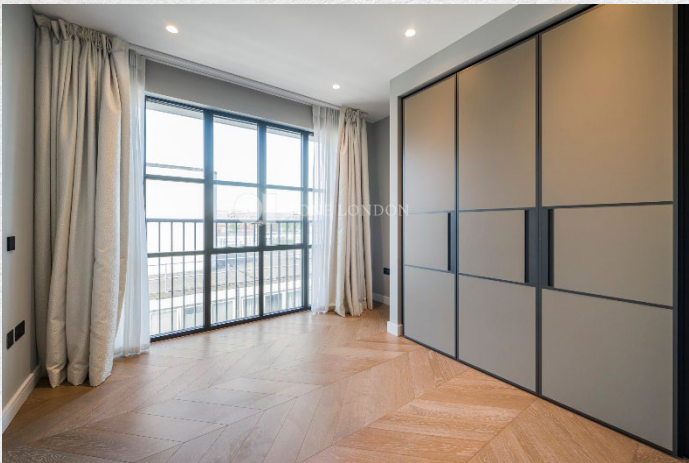
*The open plan kitchen and reception room offers spectacular far-reaching views and an abundance of natural light. The apartment further benefits from underfloor heating as well as comfort cooling and a private balcony.*

*101 on Cleveland is a new residential development located in the heart of Fitzrovia, W1. The completed building has been designed by award winning architectural and interior design practice Assael.*

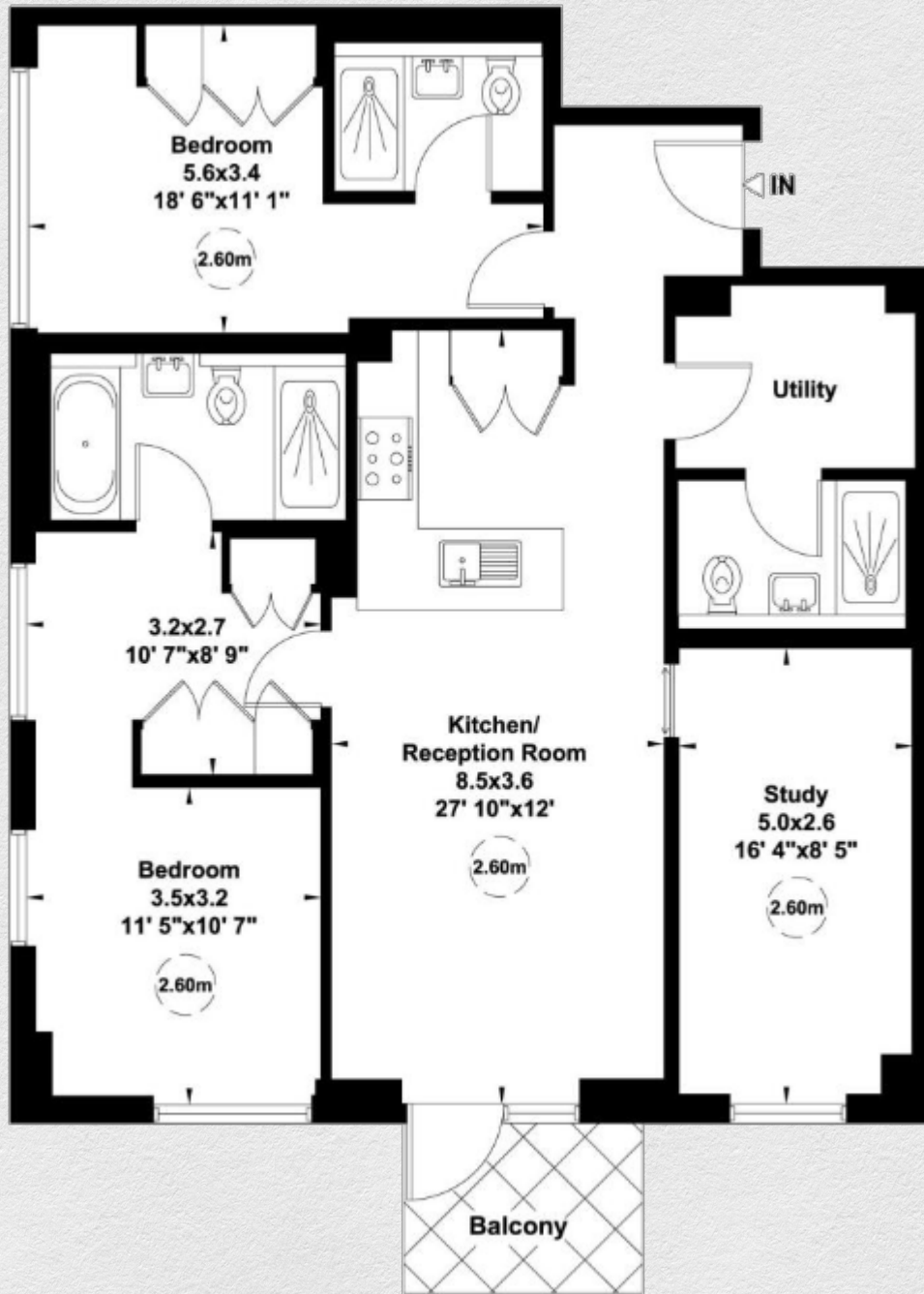
*Residents will benefit from a wide range of amenities including 24-hour concierge, private dining room, residents' bar and lounge, screening room, gym, sauna and steam room.*

*The development is perfectly placed to benefit from London's vibrant culture and burgeoning art scene. From shopping on Bond Street and Oxford Street, to dining at some of the city's best restaurants, to peaceful walks in Regent's Park. There is something for everyone.*









Address:

101 Cleveland Street, Fitzrovia, London, W1T

sq ft

bed

bath

1,132

3

3

*\*\* For illustration purposes only. Could not be to scale. One-London aims to ensure accuracy but is not liable for any discrepancies.*