



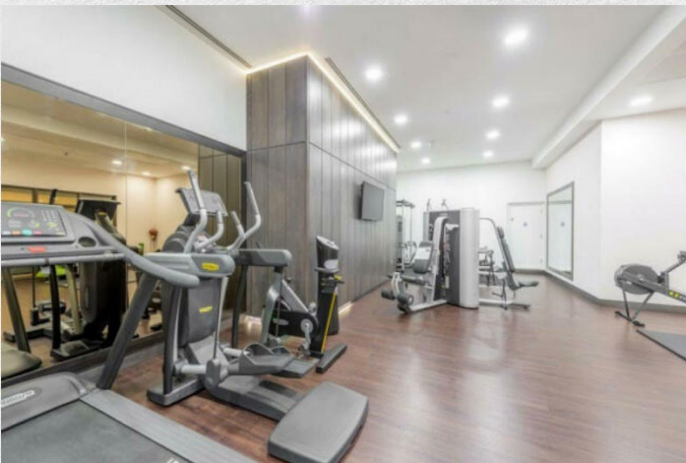
Sovereign Court, London, W6

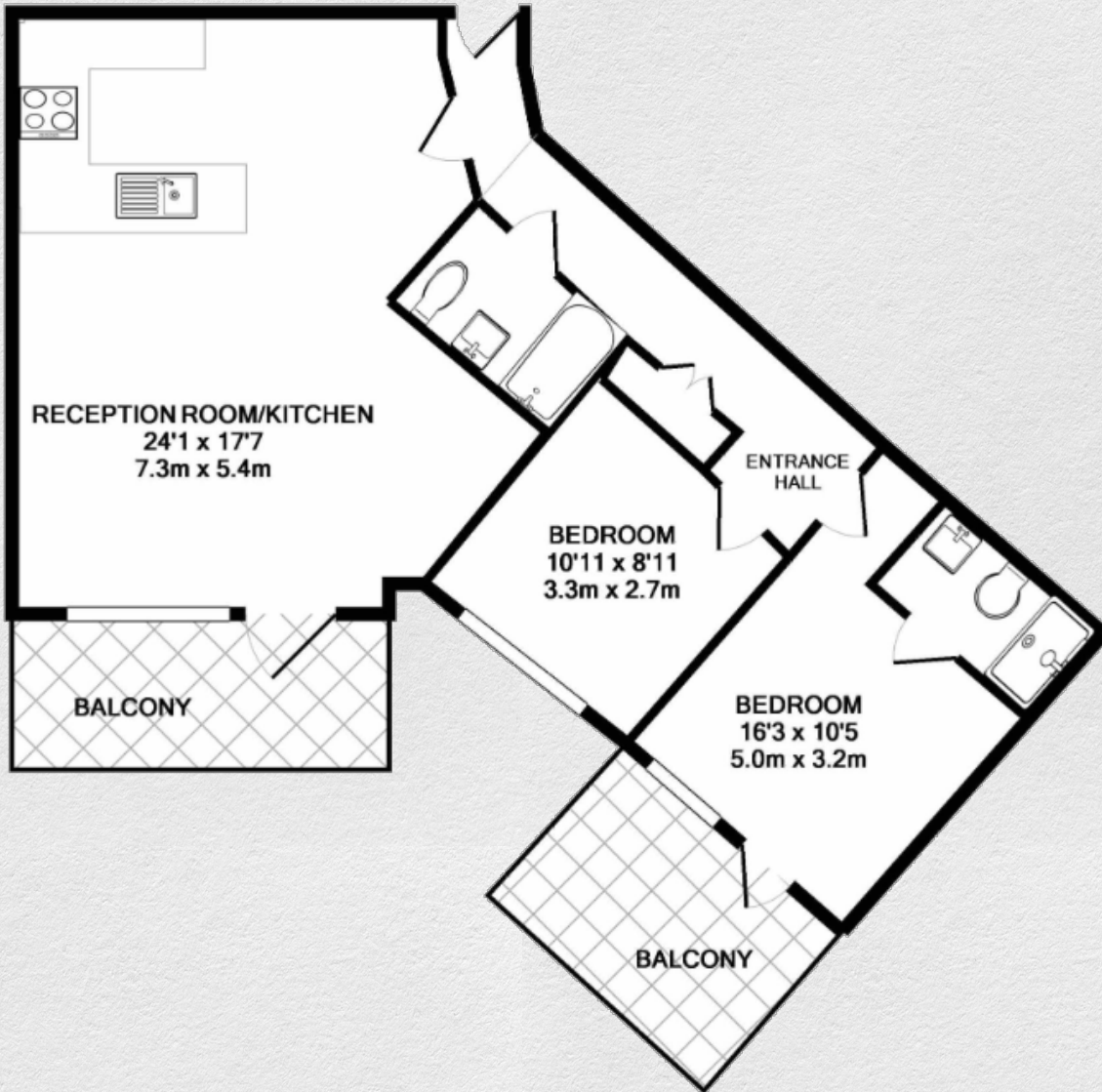
£850,000

- 823 SqFt
- Quick sale!
- Two double bedrooms
- Two Private balconies
- Excellent transport links
- 24 Hour Concierge
- Gymnasium
- Landscaped Courtyard Garden

A bright and spacious two bedroom apartment within a luxury development in Hammersmith. Situated in Marquis House with excellent views, contemporary living spaces coupled with an array of desirable amenities. the apartment benefits from wood floors, state of the art appliances, use of the onsite gym, 24 hour concierge and communal gardens.

Marquis House is part of the highly sought after Sovereign Court development in the heart of Hammersmith which is excellently positioned for the local amenities within Brackenbury village & Hammersmith. The house is also within a quarter of a mile of Hammersmith tube station (District, Piccadilly, Hammersmith&City and Circle lines)





Address:

Sovereign Court, London, W6

sq ft bed bath

823 2 2

*** For illustration purposes only. Could not be to scale. One-London aims to ensure accuracy but is not liable for any discrepancies.*