



Oakley House, Battersea Roof Gardens, London

£5,000 pcm

- 13th floor
- 2 bedrooms
- 2 bathrooms
- Unfurnished
- 1,079 sq ft
- Residents Lounge and Cinema
- Gym, spa, pool, sauna
- 24 hour concierge
- Sought after location
- Great transport links
- Vibrant area

Stunning 2 bedroom, 2 bathroom apartment with a contemporary and fresh design within a phase of Battersea Power Station, one of central London's largest, most visionary regeneration projects. Offered unfurnished.

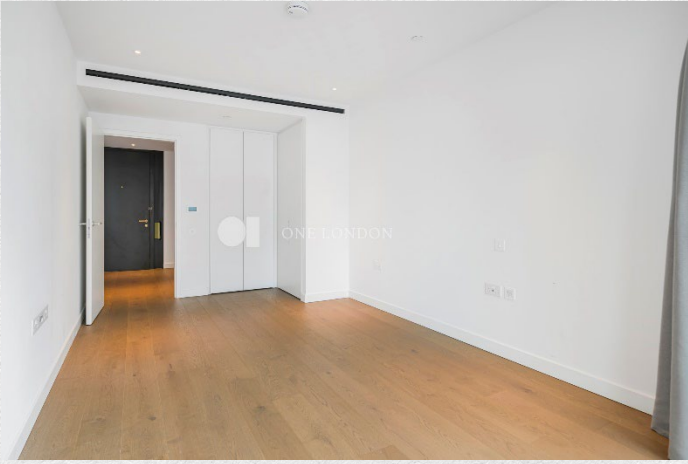
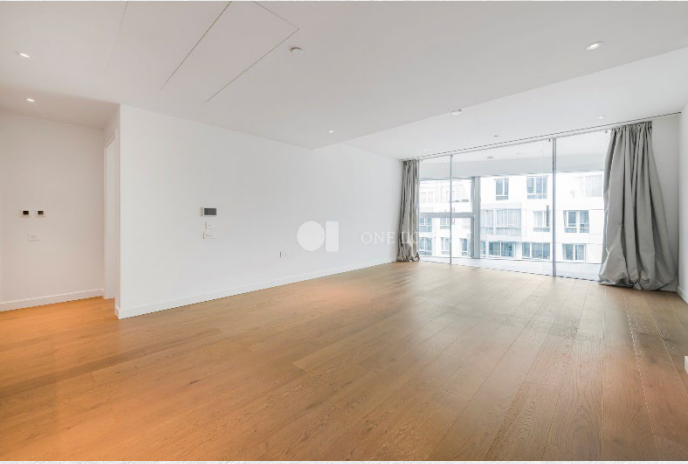
The apartment is full of character and excitement with fresh, modernist references bringing sophistication, combined with top quality finishes and considerable natural light through the conservatory and large windows.

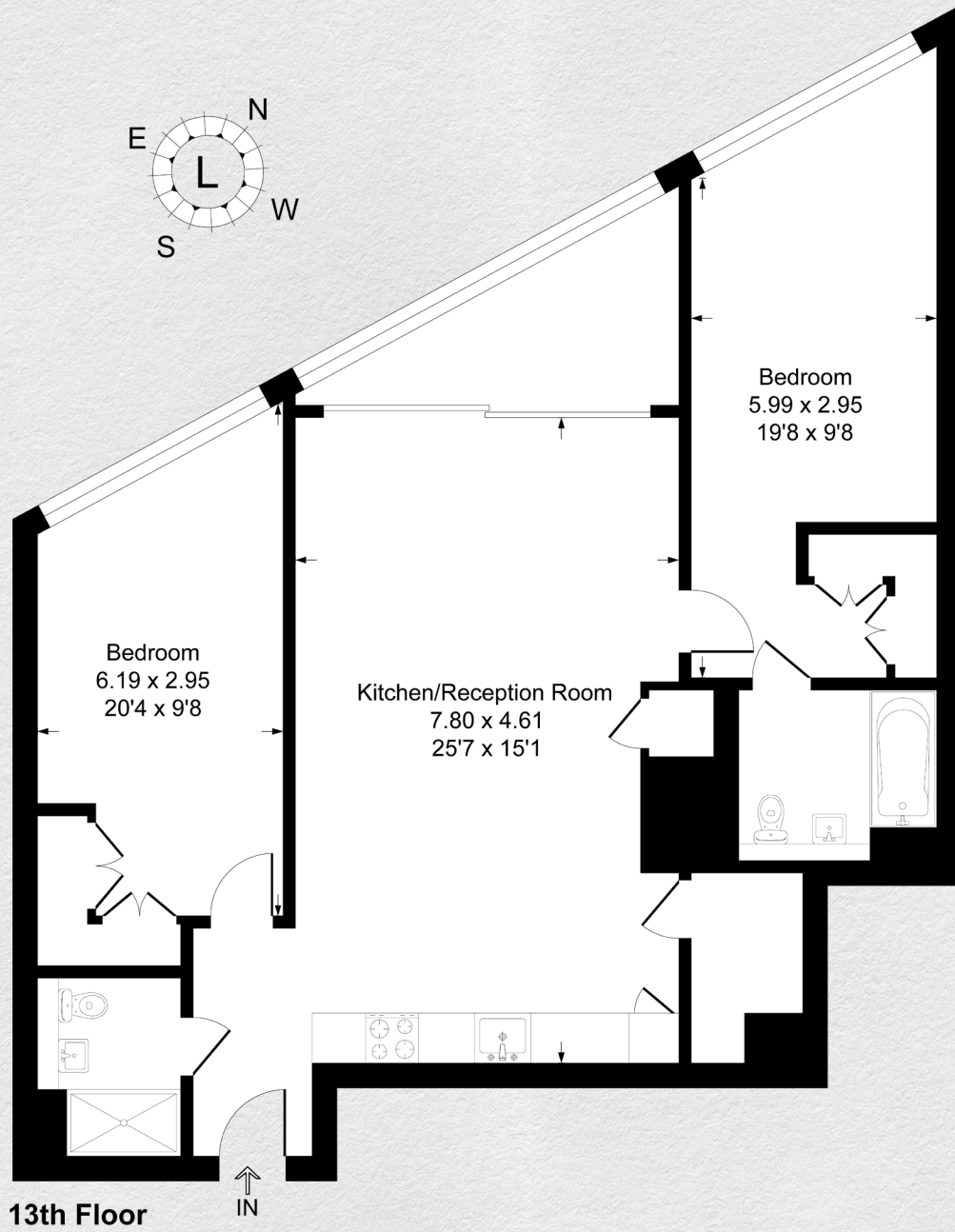
Spacious open plan living area leading to a large private winter garden. You have a bright kitchen and dining area with 2 bedrooms (master en-suite).

Ideal for entertaining, this stunning apartment offers a generous amount of external space providing amazing views, Malaysia Square and the Electric Boulevard. This is ready to move in.

A vibrant new destination for London, housing a community of homes, shops, cafes, offices, leisure, and cultural venues, with over 19 acres of public space.

Situated on the River Thames, the apartment is ideally located for Chelsea, Battersea Park and the tube, rail and Thames Clipper transport links nearby.





13th Floor

Address:

Oakley House, Battersea Roof Gardens, London

sq ft

bed

bath

1,079

2

2

*** For illustration purposes only. Could not be to scale. One-London aims to ensure accuracy but is not liable for any discrepancies.*