



King's Tower, Chelsea Creek London, SW6

£4,200 pcm

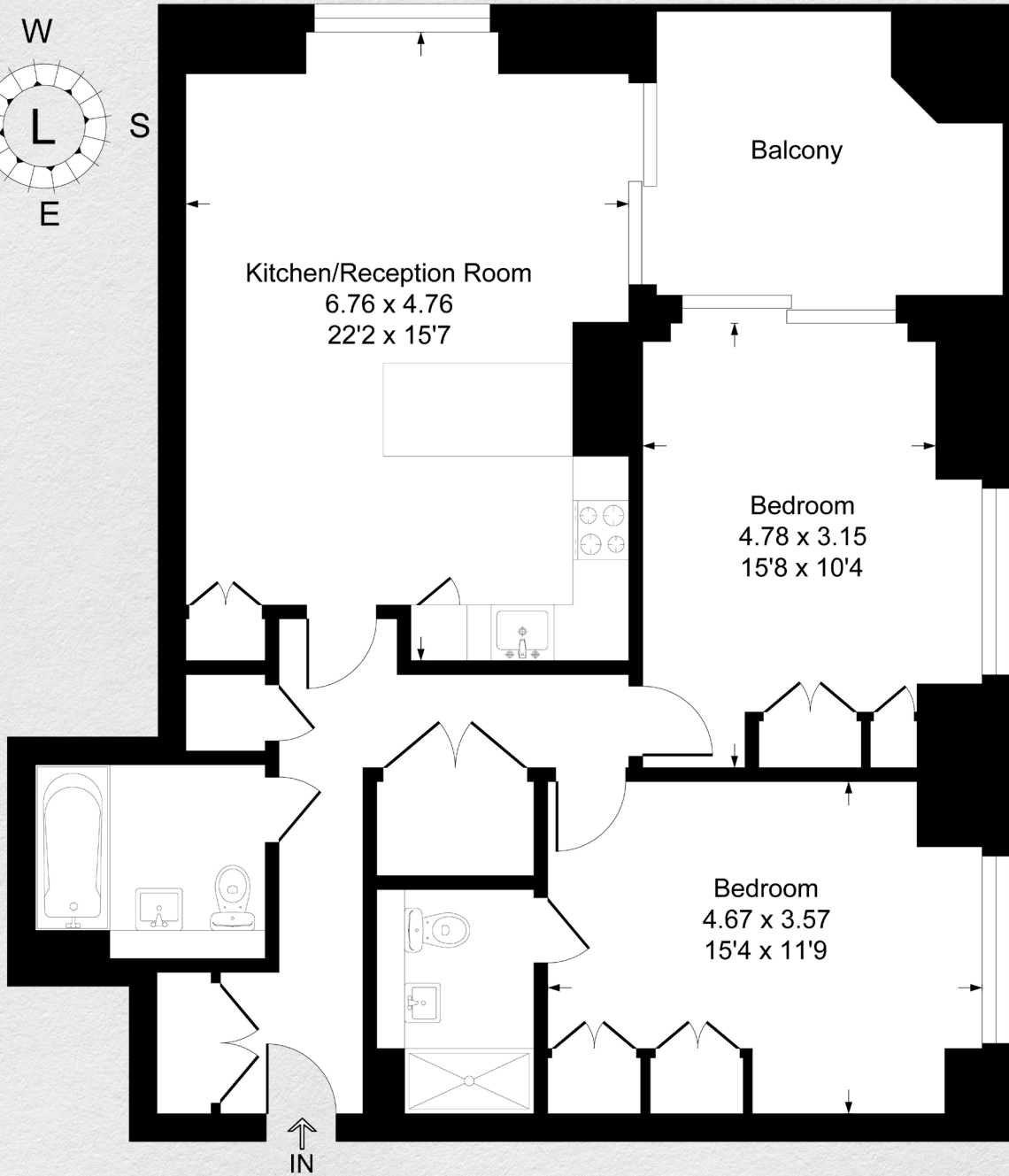
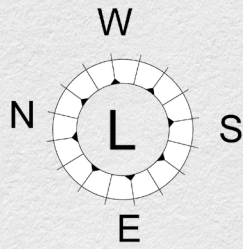
- 9th floor
- 2 bedrooms
- 2 bathrooms
- 985 sq ft
- Part furnished
- Exclusive development
- Residents Gym, spa, sauna, swimming pool
- 24-hour concierge
- Vibrant area

A stunning 9th floor, two-bedroom, two-bathroom property in the exclusive Kings Tower part of the Chelsea Creek development. Offered part furnished.

This property comprises a large bright open plan kitchen and living room leading to a large private balcony with great views, two double bedrooms with fitted wardrobes (master en-suite), a large family sized bathroom, reception hall and ample storage.

Residents of this exceptional development have exclusive use of the spa, fitness centre, indoor swimming pool, sauna, steam room, gymnasium and treatment room. Furthermore, residents will also benefit from a 24 hour concierge and an unrivalled selection of shops, bars, restaurants, leisure facilities and beautiful landscaped courtyards.





Ninth Floor

Address:	sq ft	bed	bath
King's Tower, Chelsea Creek, London, SW16	985	2	2

*** For illustration purposes only. Could not be to scale. One-London aims to ensure accuracy but is not liable for any discrepancies.*