



Asquith House, West End Gate, London, W2

£4,400 pcm

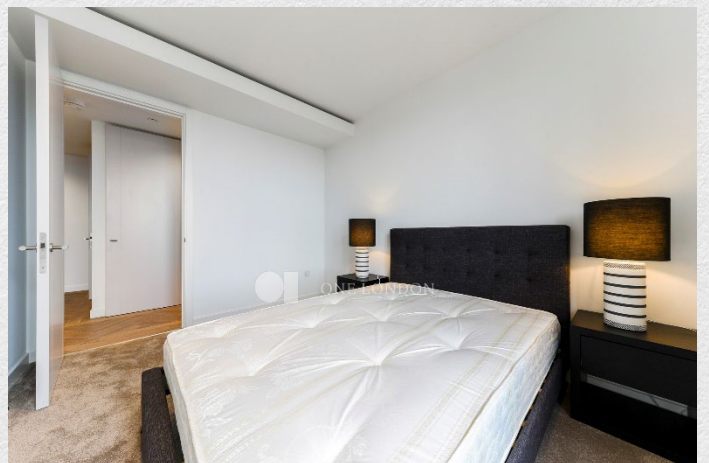
- Available mid July 2024
- 2 bedrooms
- 2 bathrooms
- Spacious dining area
- 763 sq ft
- Private terrace
- Swimming pool, spa & gym
- Cinema and lounge
- Parking available
- 24 hour concierge
- Great transport links

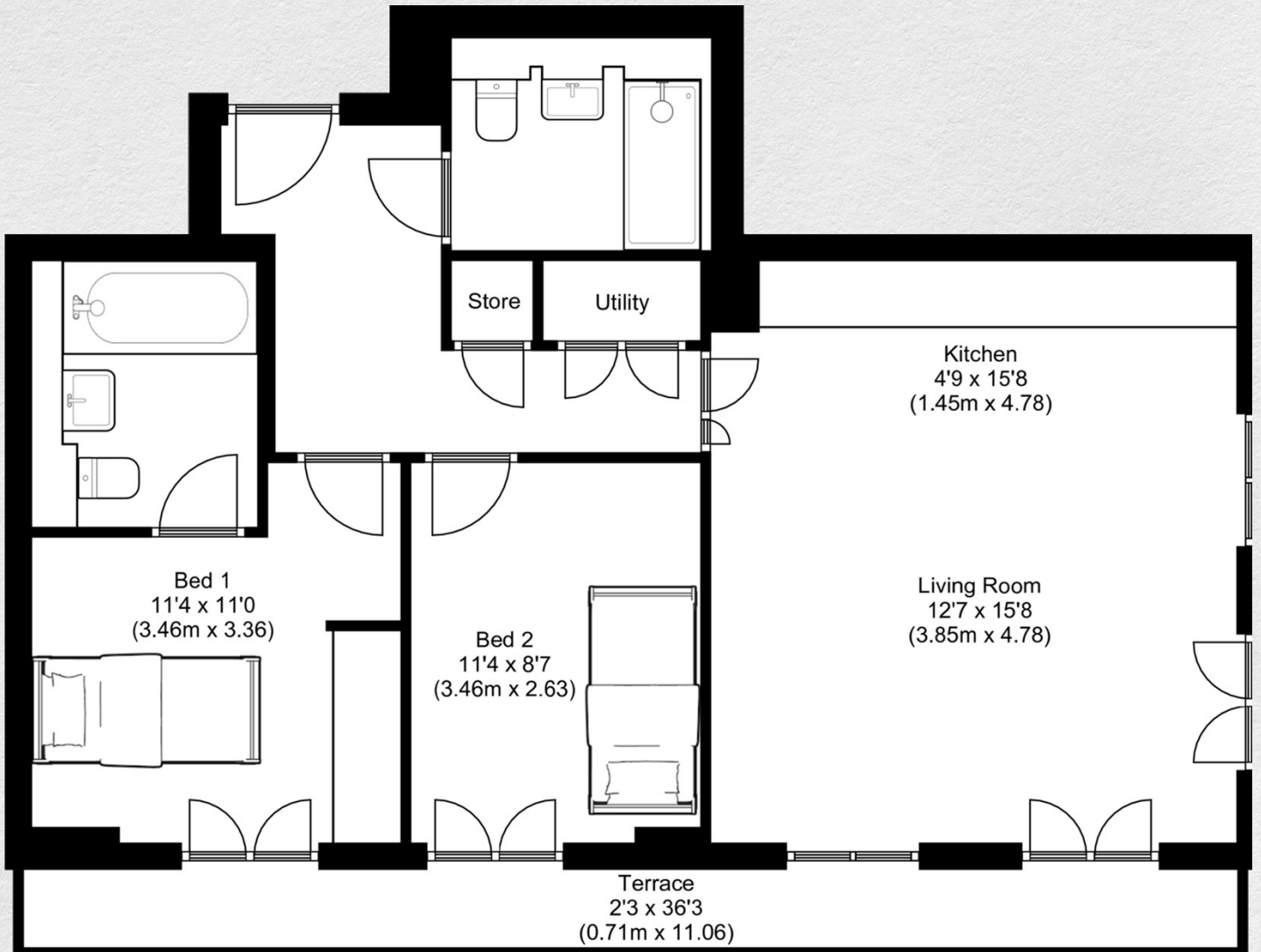
Brand new 2 bedroom, 2 bathroom apartment with a private terrace set in Asquith House, part of the sought after West End Gate development. Available mid July 2024.

Close to all the amenities of central London, this property comprises a spacious open plan kitchen/ living room with access to a private terrace, two double bedrooms and two bathrooms (master en suite). The open plan reception area is ideal for entertaining and the private terrace is perfect for relaxing with views across London.

Asquith House benefits from a sweeping vantage point over the peaceful gardens and is a place of classical tranquillity and beauty. The properties themselves are a delightful composition between elegance and precise craftsmanship, the generous and bright living spaces create a truly contemporary ambience which offer the perfect way to entertain esteemed guests.

West End Gate is located close to the West End, Hyde Park and many transport links from Edgware Road and Paddington including the future Crossrail station for Elizabeth line trains.





Address:	sq ft	bed	bath
Asquith House, West End Gate, London, W2	763	2	2

*** For illustration purposes only. Could not be to scale. One-London aims to ensure accuracy but is not liable for any discrepancies.*