



Battersea Powers Station, Holmby House

£7,300 pcm

Incredible 3 bedroom, 2 bathroom apartment located in Prospect Place at the highly sought after Battersea Power Station development is now available.

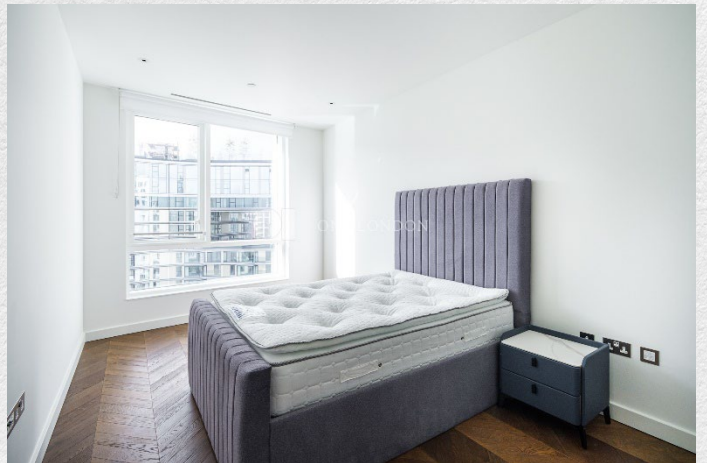
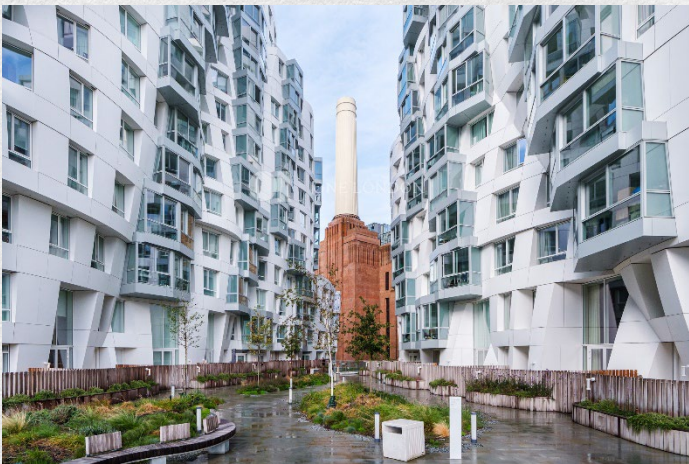
- 3 bedroom
- 2 bathroom
- Spacious dining area
- 1,082 sq ft
- Luxury residents facilities
- Sought after location
- 24 hour concierge
- Great transport links

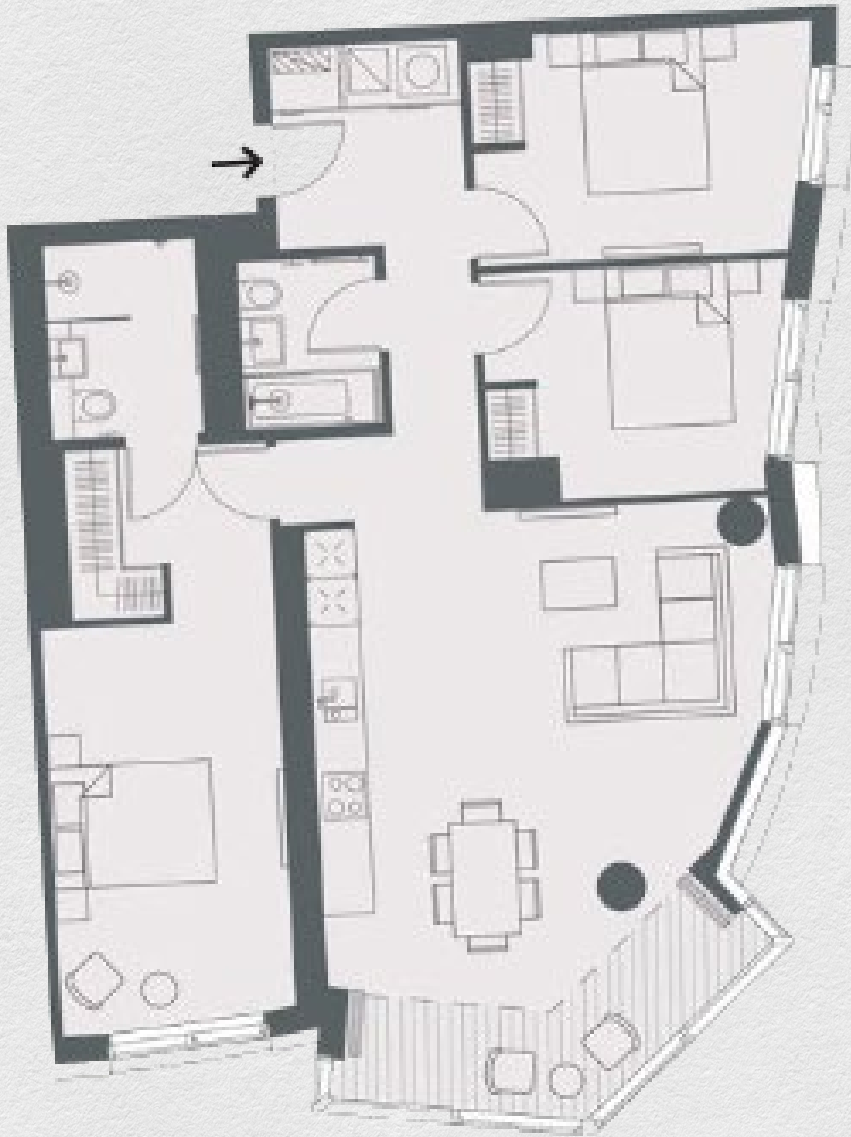
This 1,082 sq ft apartment is equipped with all modern facilities and amenities needed to complement a comfortable lifestyle, offered unfurnished - allowing you to personalize your living space.

The apartment boasts fabulous views and features a generously sized winter garden. The thoughtfully conceived floor plan provides a harmonious blend of relaxation and entertainment spaces, featuring an open plan, fully fitted kitchen, and spacious living room. Adding to its prestige, this accommodation is fitted with climate-controlled comfort throughout and underfloor heating.

The winter garden offers awe-inspiring views of the stunning Prospect Garden and Flower Building. Residents will also have access to a private garden, providing a peaceful escape from the hustle and bustle of the city.

This apartment is perfect for anyone seeking a luxurious living experience in a prime location. With its modern facilities, spacious living areas, and breathtaking views, it offers the perfect combination of comfort and style





Address:

Holmby House, Battersea Power Station, London

sq ft

bed

bath

1082

3

2

*** For illustration purposes only. Could not be to scale. One-London aims to ensure accuracy but is not liable for any discrepancies.*