



£6,200 per month

9 Millbank, London, SW11

- 2 bedrooms
- 2 bathrooms
- Large reception Room
- 935 sq ft
- Large private terrace
- High spec
- 24 hour concierge
- 5 star luxury residents facilities
- Private cinema
- Prestigious Location

This well positioned new two bedroom, two bathroom garden facing apartment with private terrace, is available to rent now !!

Set in the best position facing the tranquil landscaped gardens, this is the ideal two bedroom, 2 bathroom apartment and offers a peaceful view from your private terrace. The spacious reception room benefits from interior design that highlights the heritage of the development, but with the height of modern elegance, and the open plan kitchen with Küppersbusch appliances and expertly crafted finishes complete the space.

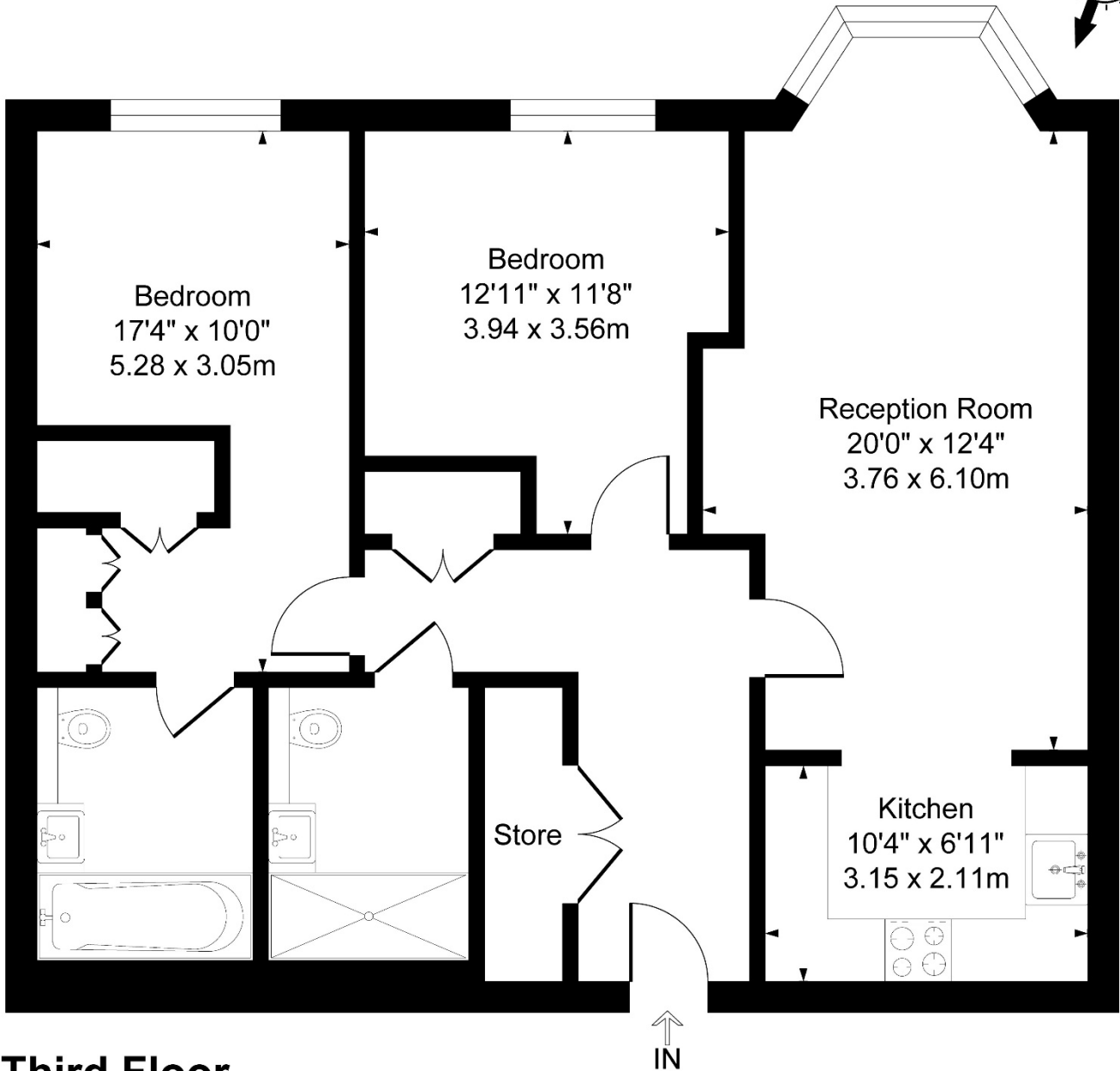
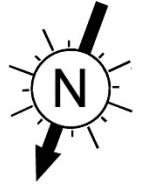
All bedrooms are double enjoying views over the peaceful, private landscaped garden and the main bedroom also features a large walk-in wardrobe. They are finished in a warm neutral palette to create a calm retreat where you can relax and rejuvenate. The property also benefits from having two bathrooms, one of which is en-suite.

For residents' comfort, all properties in 9 Millbank have underfloor heating throughout, and comfort cooling to all reception rooms and bedrooms.



Millbank, London SW1

9 Millbank, London SW1P
Approximate Gross Internal Area
935 sq ft - 87 sq m



Third Floor

Illustration for identification purposes only, not in scale