



Rathbone Place, Fitzrovia, London, W1T

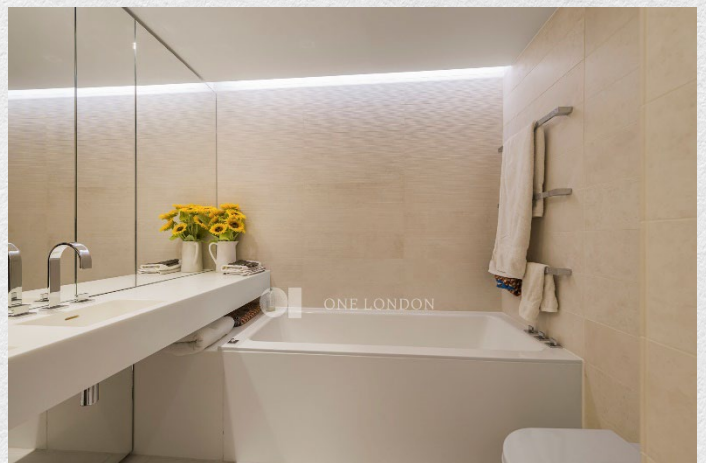
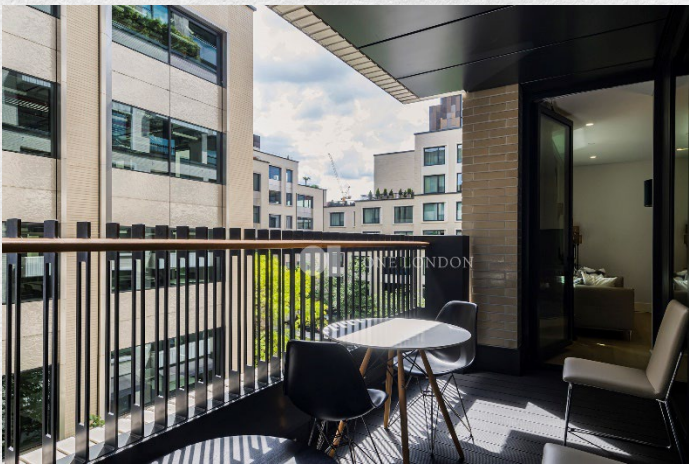
£2,595,000

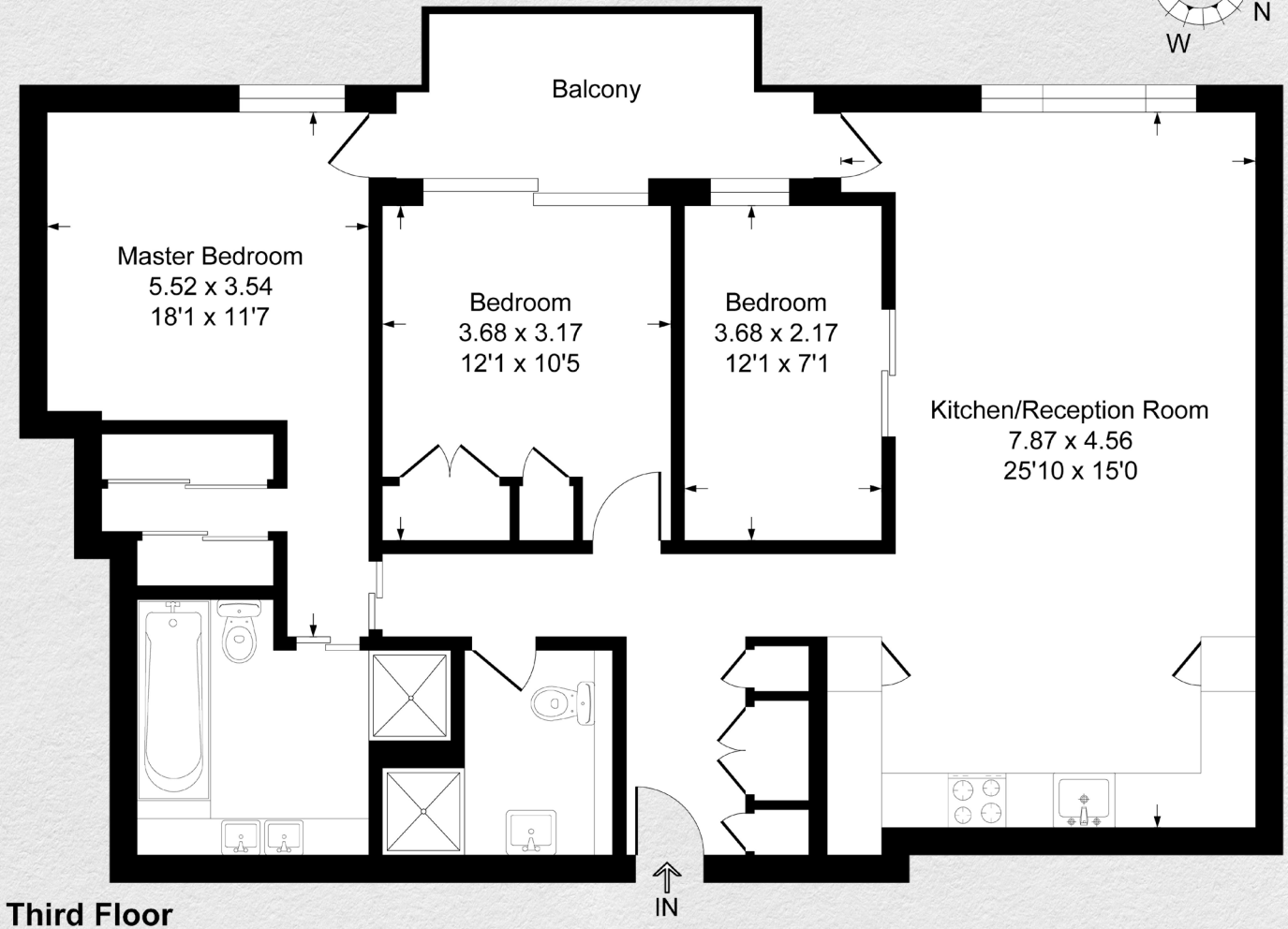
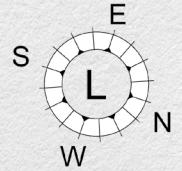
- 3rd floor
- 3 bedrooms
- 2 bathrooms
- 1,051 sq ft
- Private balcony
- Luxury residents' facilities
- Comfort cooling
- 24-hour concierge
- Great transport links

Located on the 3rd floor, The apartment comprises an open plan reception room with fully fitted kitchen, Miele appliances throughout, private terrace, master bedroom with dressing area and en-suite bathroom, second double bedroom with fitted wardrobes, third bedroom/ office and family bathroom, comfort cooling.

Residents have use of the 24-hour concierge, access to beautiful gardens, residents' gym, swimming pool, sauna and steam room, screening room, lounge, wine storage and tasting room. Rathbone Square has been designed to offer a tranquil environment, whilst being ideally located moments from Oxford Street.

Situated in the heart of London's West End, ideal for transport links in and around London, with The City and West London being just 10 minutes away via the underground.





Address:	sq ft	bed	bath
Rathbone Place, Fitzrovia, London, W1	1051	3	2

*** For illustration purposes only. Could not be to scale. One-London aims to ensure accuracy but is not liable for any discrepancies.*