

## West End Gate, London, W2

£6,200 pcm

- 100% private build
- Parking included
- 3 bedrooms
- 2 bathrooms
- 15th floor with great views
- Private balcony
- 1,155 sq ft
- Unfurnished
- 24-hour concierge
- Private dining room,
- Gym, swimming pool, sauna/steam room
- Residents lounge

*Brand new 3 bedroom, 2 bathroom apartment set on the 15th floor within Westmark Tower, a part of the sought after West End Gate development, nearby all the amenities of central London. This furnished property comprises a spacious open plan kitchen/ living room with access to a private balcony, three double bedrooms and two bathrooms (master en suite). Parling included.*

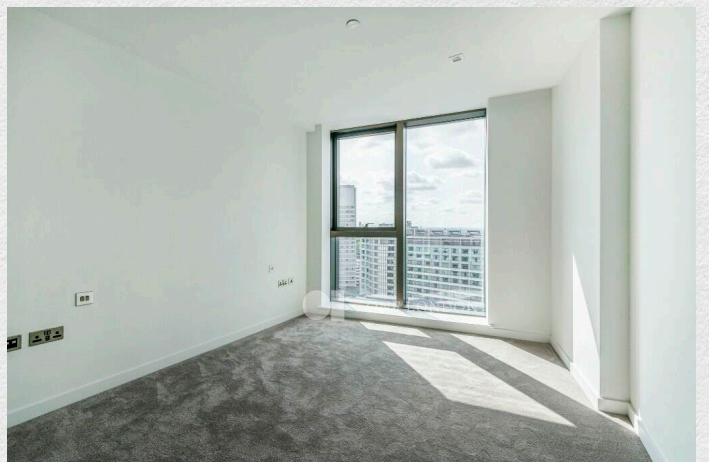
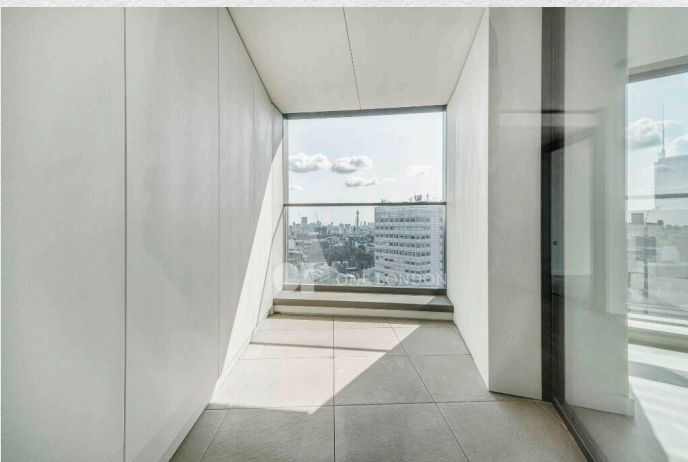
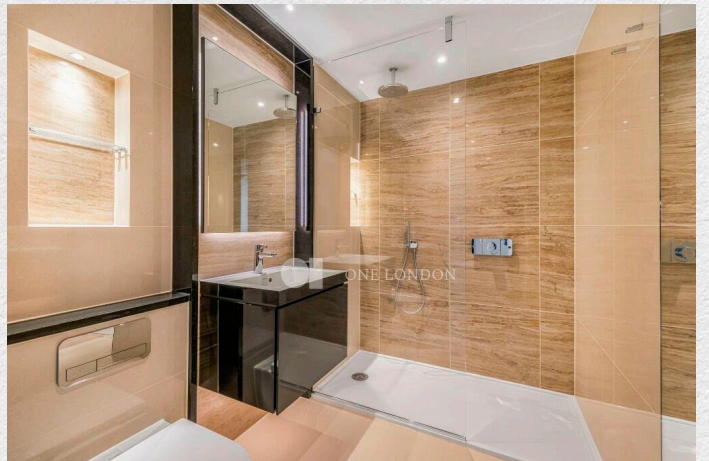
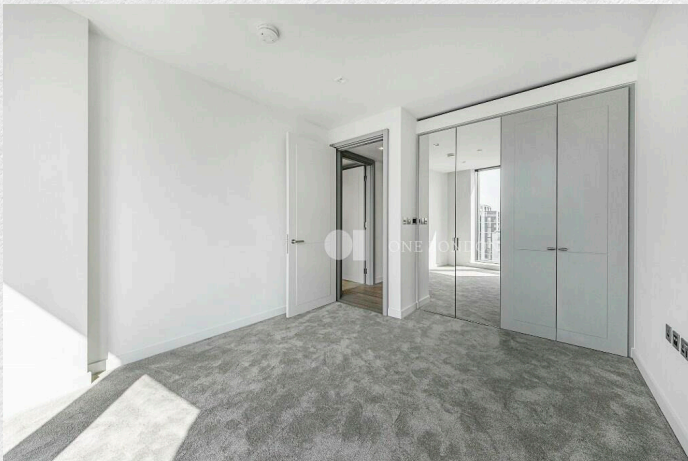
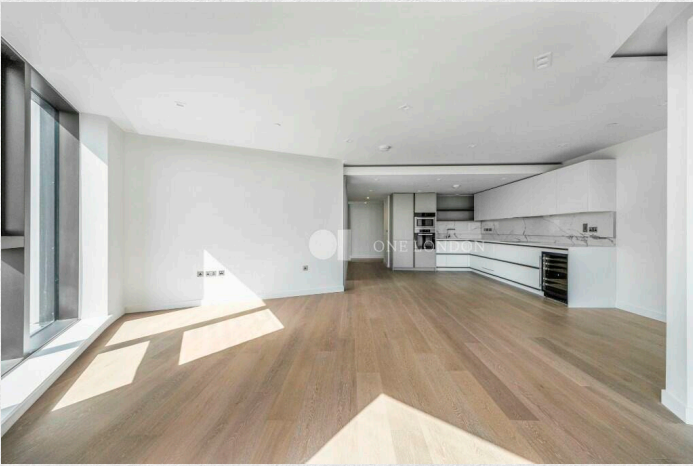
*The 15th floor, south-east facing, private balcony offers spectacular views of Regents Park and the City of London. This apartment is offered unfurnished.*

*The development benefits from 24HR concierge, private resident's gym, pool and spa, cinema screening room, business lounge and resident's garden.*

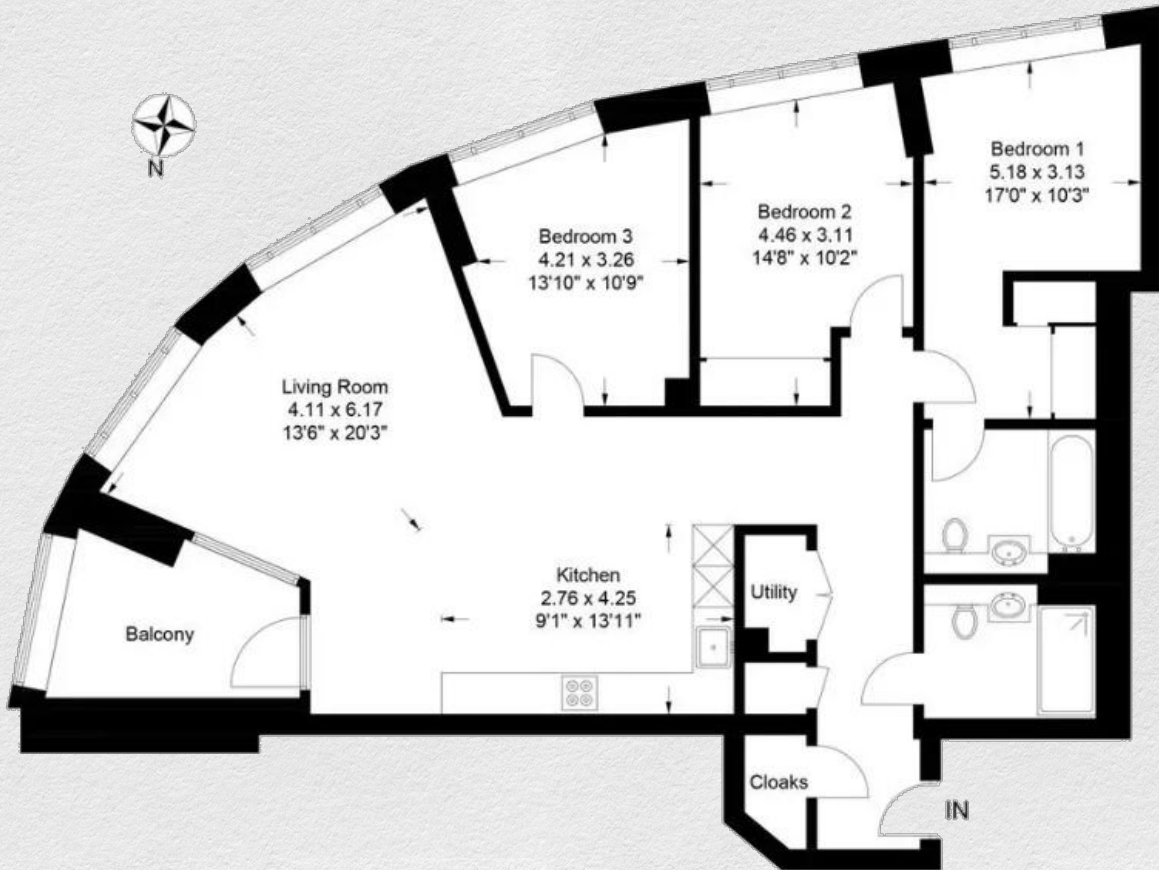
*West End Gate is located close to the West End, Hyde Park and many transport links from Edgware Road and Paddington including the future Crossrail station for Elizabeth line trains.*

*Service charge Est at £6.05 per sq ft. Ground rent £1000 per annum.*









Address:

West End Gate, London, W2

sq ft

bed

bath

1,155

3

2

*\*\* For illustration purposes only. Could not be to scale. One-London aims to ensure accuracy but is not liable for any discrepancies.*