

West End Gate, London, W2

£6,900 pcm

- 100% private build
- 3 bedrooms
- 2 bathrooms
- 15th floor with great views
- Private balcony
- 1,155 sq ft
- Unfurnished
- 24-hour concierge
- Private dining room,
- Gym, swimming pool, sauna/steam room
- Residents lounge

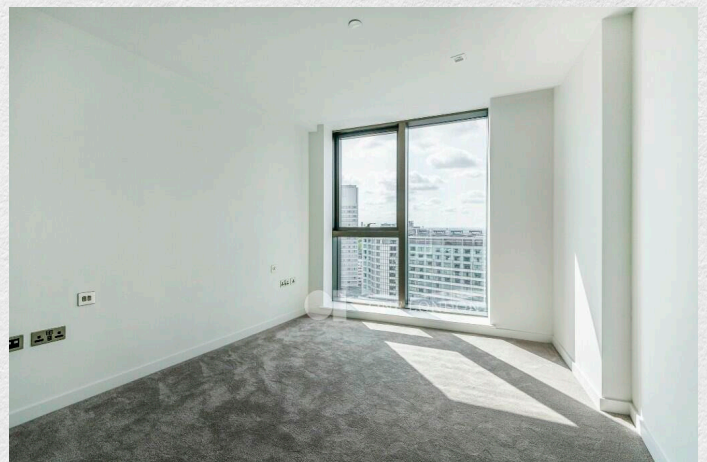
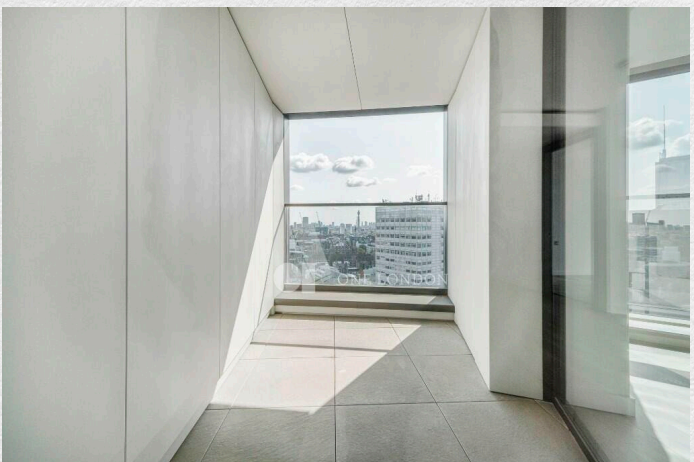
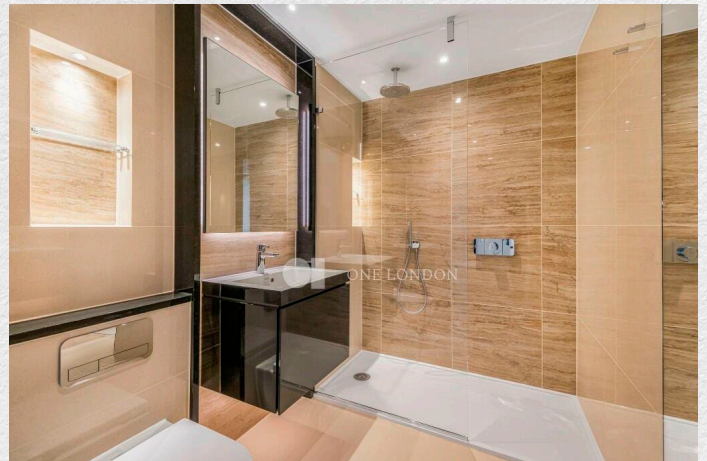
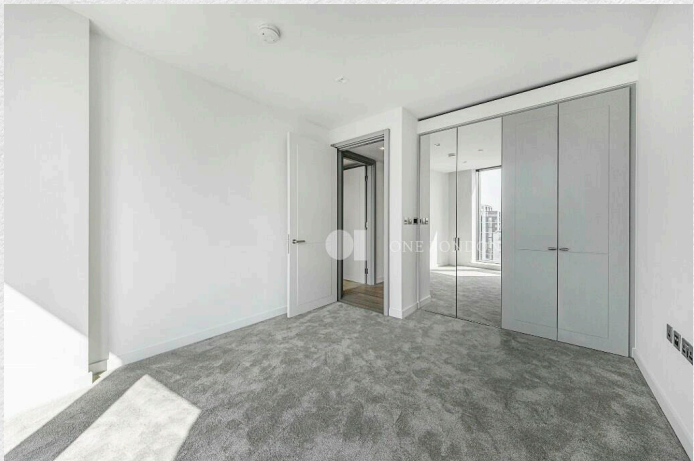
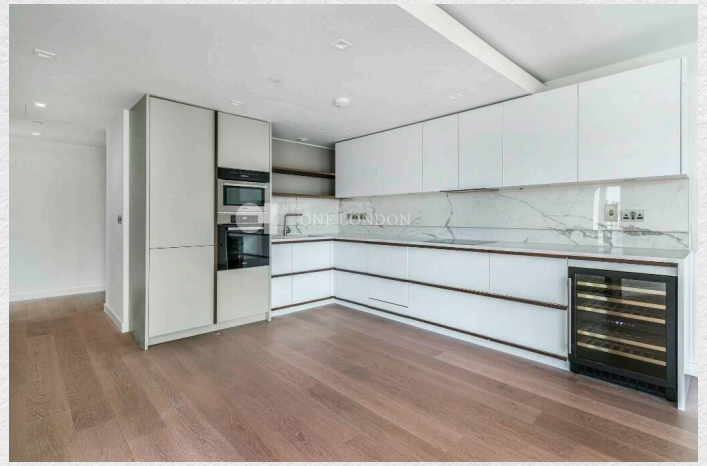
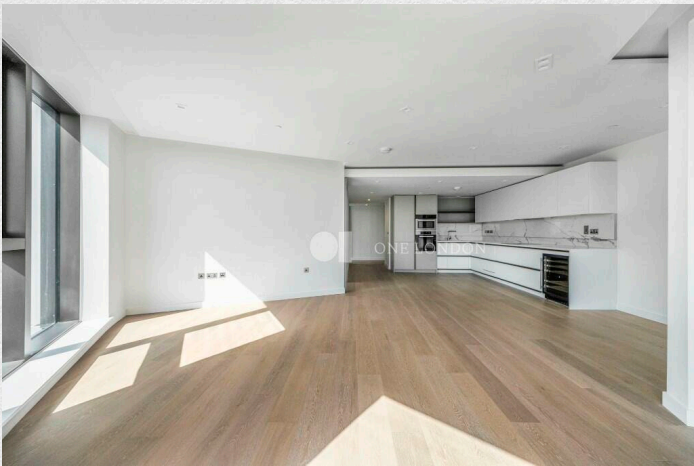
Brand new 3 bedroom, 2 bathroom apartment set on the 15th floor within Westmark Tower, a part of the sought after West End Gate development, nearby all the amenities of central London. This furnished property comprises a spacious open plan kitchen/ living room with access to a private balcony, three double bedrooms and two bathrooms (master en suite).

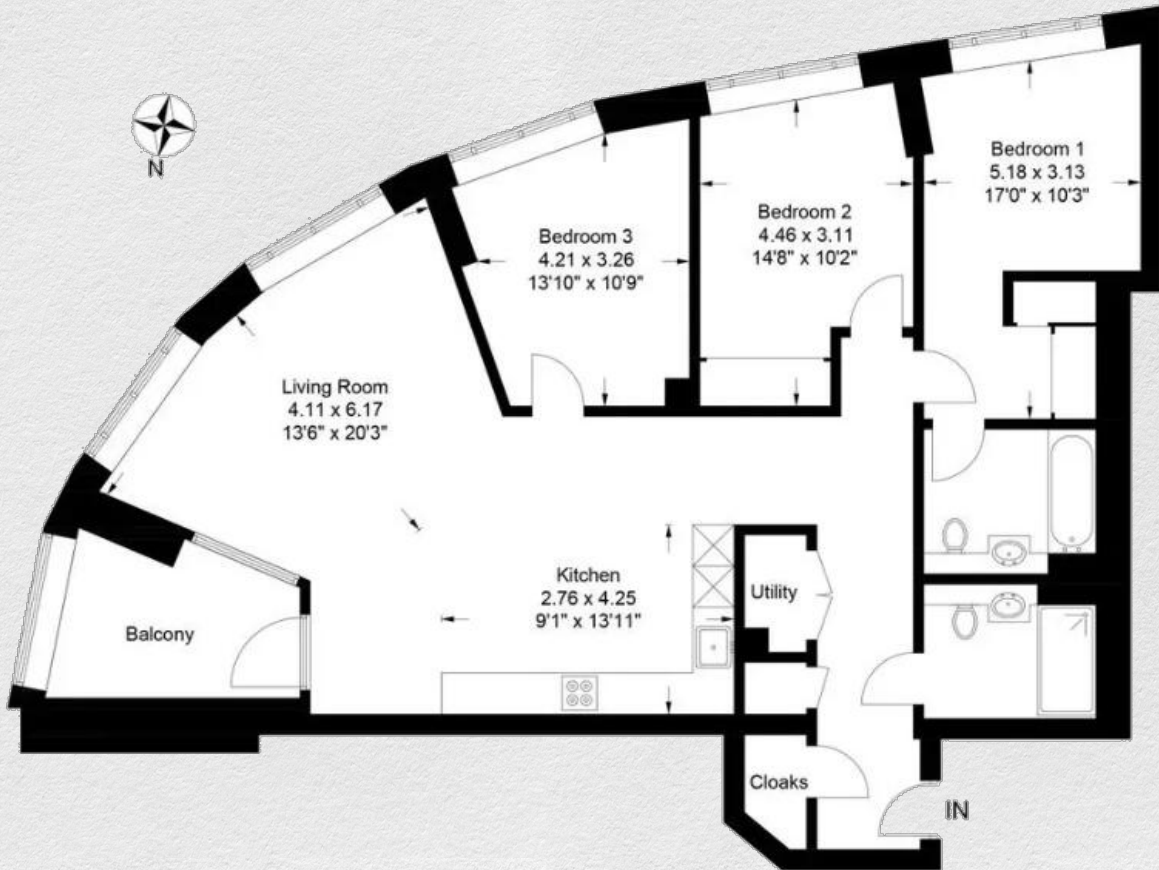
The 15th floor, south-east facing, private balcony offers spectacular views of Regents Park and the City of London. This apartment is offered unfurnished.

The development benefits from 24HR concierge, private resident's gym, pool and spa, cinema screening room, business lounge and resident's garden.

West End Gate is located close to the West End, Hyde Park and many transport links from Edgware Road and Paddington including the future Crossrail station for Elizabeth line trains.

Service charge Est at £6.05 per sq ft. Ground rent £1000 per annum.





Address:

West End Gate, London, W2

sq ft

bed

bath

1,155

3

2

*** For illustration purposes only. Could not be to scale. One-London aims to ensure accuracy but is not liable for any discrepancies.*