



## Dudin Brown House, Hampstead Manor, London, NW3

£7,750 pcm

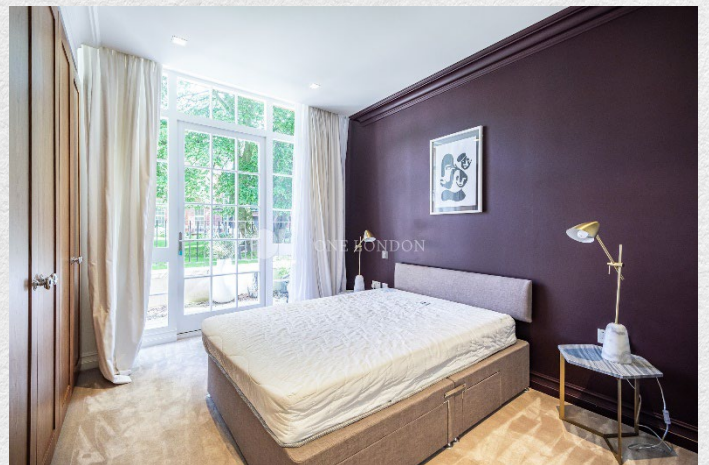
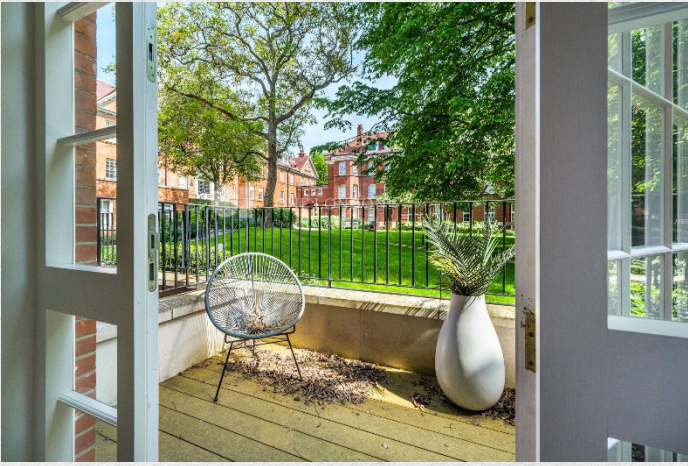
- Duplex apartment
- 2 parking spaces
- 3 bedrooms
- 3 bathrooms
- plus WC
- 1,832 sq ft internal space
- Separate utility room.
- Nearly 3m ceiling heights.
- High quality furniture to be included.
- 1 Patio & 1 Terrace

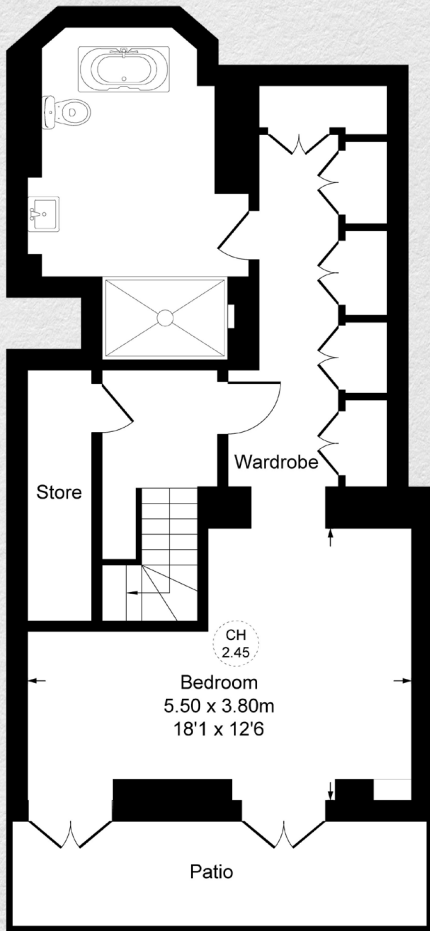
*A boutique 3 bed 3 bath plus WC, in a historical conversion building within Dudin Brown retaining most of it's original features. The 3-bed duplex apartment looks onto either side of the building, Kidderpore Avenue and the internal Courtyard.*

*1,832 sq ft internal space with beautifully settings for entertaining and luxuriously comfortable rooms in which to unwind, as well as leafy viewpoints and airy bay windows.*

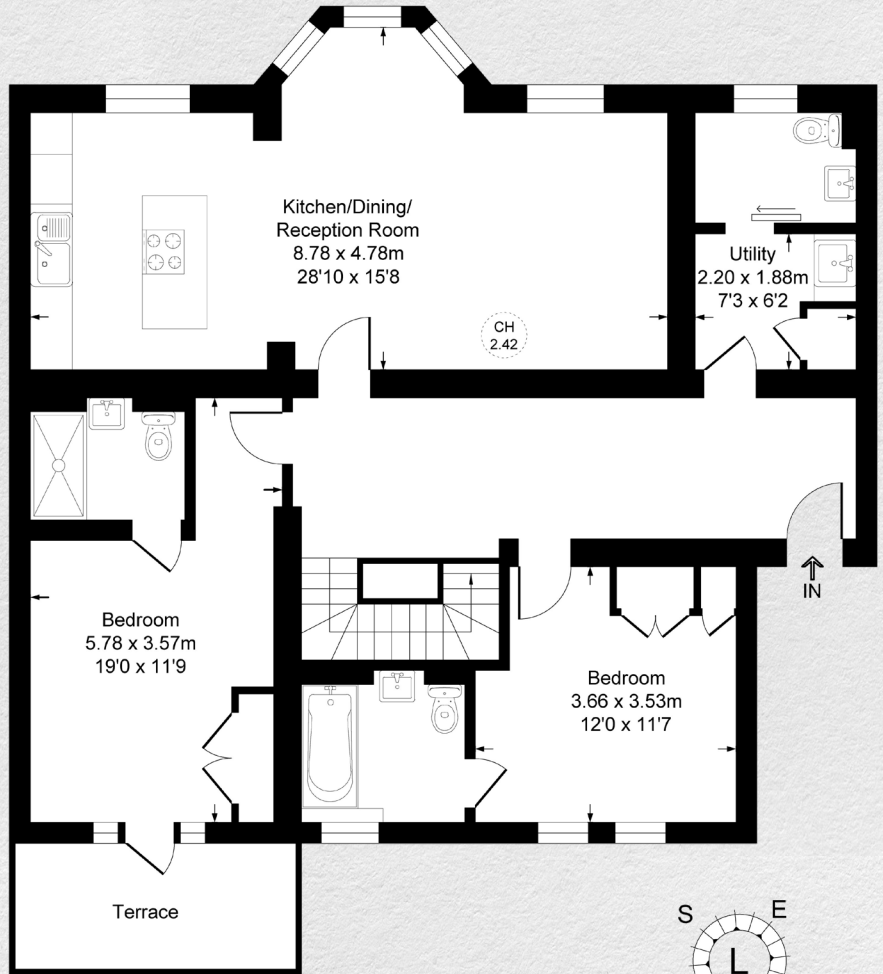
*This apartment consists of a large open plan reception/kitchen/dining room, three large en-suite bedrooms all with fitted wardrobes, a separate utility room, a guest WC and a storeroom giving ample storage space.*

*Originally built in 1905 and designed by Falconer Macdonald, Dudin Brown retains the refined erudite character of the historic building with improved contemporary relevance. This home is tucked within the tranquil Hampstead Manor development, within close vicinity to the idyllic Hampstead Village.*

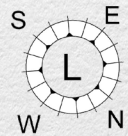




**Lower Ground Floor**  
**Approximate Floor Area**  
**586.20 sq.ft**  
**(54.46 sq.m)**



**Ground Floor**  
**Approximate Floor Area**  
**1245.70 sq.ft**  
**(115.73 sq.m)**



Address:

Dudin Brown House, London, NW3

sq ft	bed	bath
1,832	3	3

*\*\* For illustration purposes only. Could not be to scale. One-London aims to ensure accuracy but is not liable for any discrepancies.*