



Westmark Tower, Edgware Road, London, W2

£1,800,000

Two bedrooms | Two bathrooms plus guest powder room | 24th Floor | 1050 Sq Ft | South Aspect | City and Hyde Park views | Prestigious Berkeley Development - Westmark Tower in West End Gate | 2 minute walk to Edgware Road Station | High Specification – comfort cooling | 24 hr Concierge | Resident's Gardens | Resident's Dining Room and Lounge | Cinema Room | Swimming Pool | Steam Room | Sauna | Treatment Suite | Fully Equipped Gymnasium | Co-working spaces

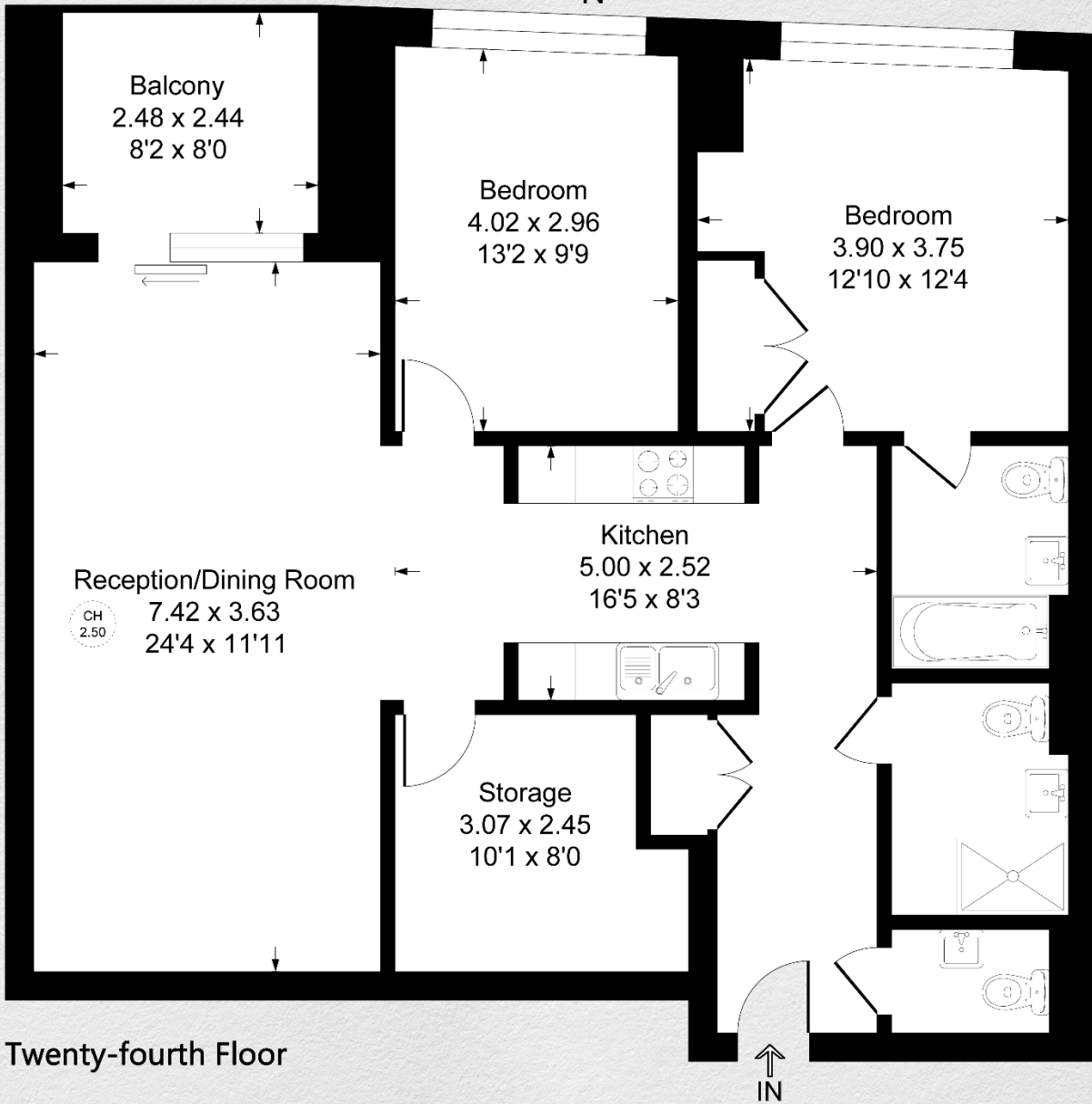
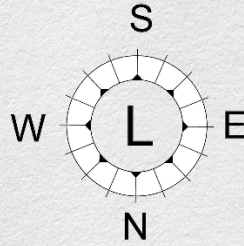
A unique and one of its kind at Westend Gate, this 2-bedroom, 2- bathroom apartment was reconfigured prior to completion to offer a third powder room and large storage area.

Set on the 24th floor within Westmark Tower, this property comprises a spacious open plan kitchen/ living room leading onto a private balcony providing spectacular views of Hyde Park and The City of London.

The development benefits from a 24hr concierge, private resident's gym, pool and spa, cinema screening room, business lounge and resident's garden.

West End Gate is located close to the West End, Hyde Park and many transport links from Edgware Road and Paddington with access to the Elizabeth line.





Twenty-fourth Floor

Address:	sq ft	bed	bath
Westmark Tower, West End Gate, London, W2	1,050	2	2

*** For illustration purposes only. Could not be to scale. One-London aims to ensure accuracy but is not liable for any discrepancies.*