



## Wilshire House, Battersea Powers Station, London, SW11

£5,000 pcm

- 12<sup>th</sup> floor with great views
- 2 bedrooms
- 2 bathrooms
- Fitted wardrobes.
- Spacious dining area
- 879 sq ft
- Luxury residents' facilities
- Sought after location
- 24 hour concierge
- Great transport links
- Vibrant area

*Incredible 12<sup>th</sup> floor, 2 bedroom, 2 bathroom apartment located in Prospect Place at the highly sought after Battersea Power Station development is now available. Offered furnished.*

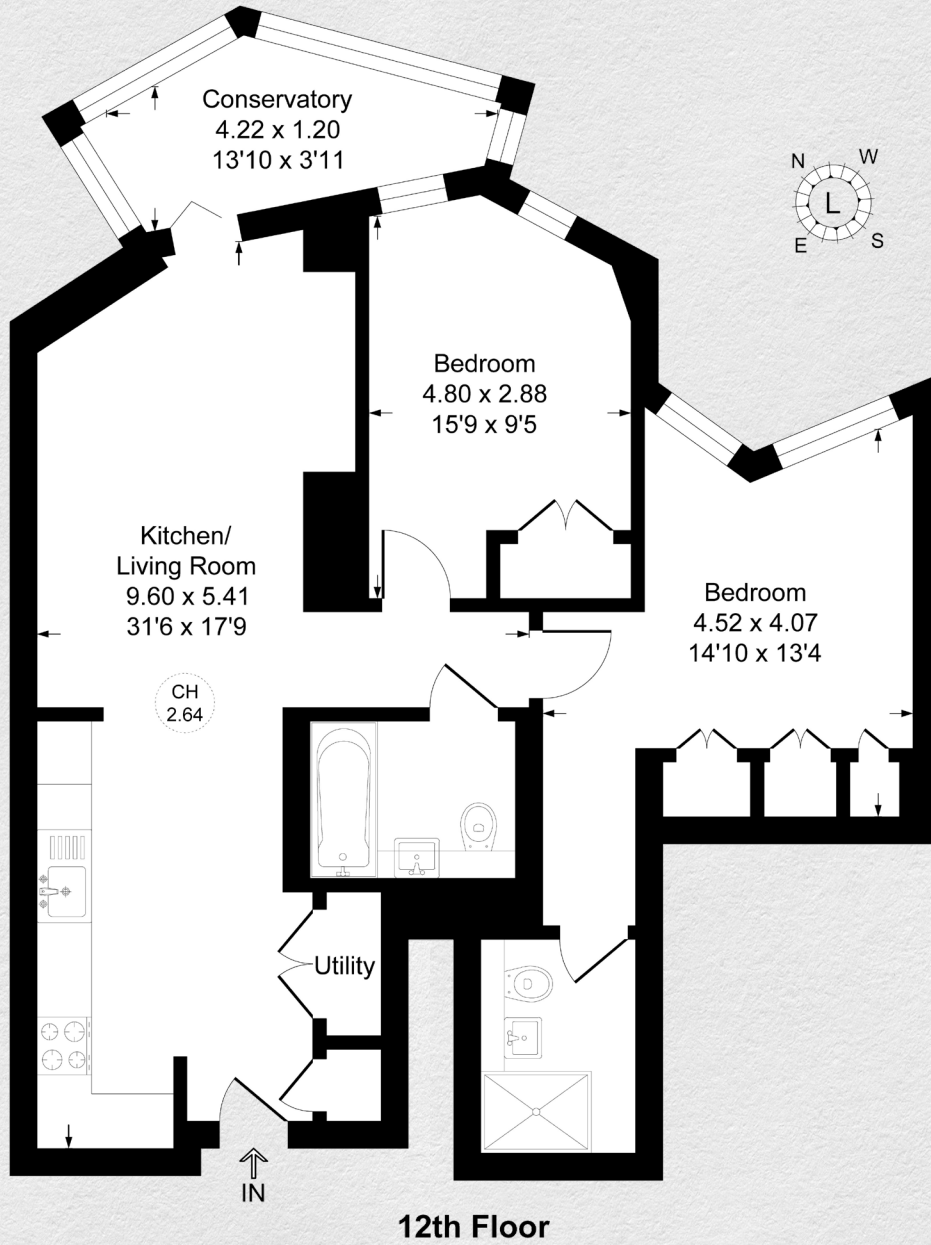
*This 879 sq ft apartment is equipped with all modern facilities and amenities needed to complement a comfortable lifestyle. Ample storage is provided with a separate utility room and fitted wardrobes in both bedrooms.*

*The apartment boasts fabulous views and features a generously sized private conservatory. The thoughtfully conceived floor plan provides a harmonious blend of relaxation and entertainment spaces, featuring an open plan, fully fitted kitchen, and spacious living room. Adding to its prestige, this accommodation is fitted with climate-controlled comfort throughout and underfloor heating.*

*The private conservatory offers awe-inspiring views of the stunning Prospect Garden and Battersea Power Station. Residents will also have access to a private garden, providing a peaceful escape from the hustle and bustle of the city.*

*This apartment is perfect for anyone seeking a luxurious living experience in a prime location. With its modern facilities, spacious living areas, and breathtaking views, it offers the perfect combination of comfort and style*





Address:

Wilshire House, Battersea Power Station, London, SW11

sq ft

bed

bath

879

2

2

*\*\* For illustration purposes only. Could not be to scale. One-London aims to ensure accuracy but is not liable for any discrepancies.*