



## Principle Tower, Shoreditch High St, London, EC2A

£800,000

---

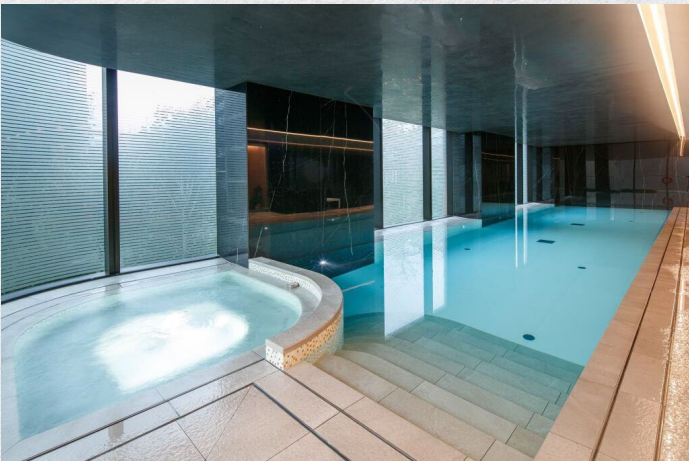
One bedroom apartment | Private balcony | Higher floor | 541 SqFt | 5 major transport hubs | 24 Hour Concierge | Lap pool | Spa | Gymnasium | Residents Lounge | Screening room

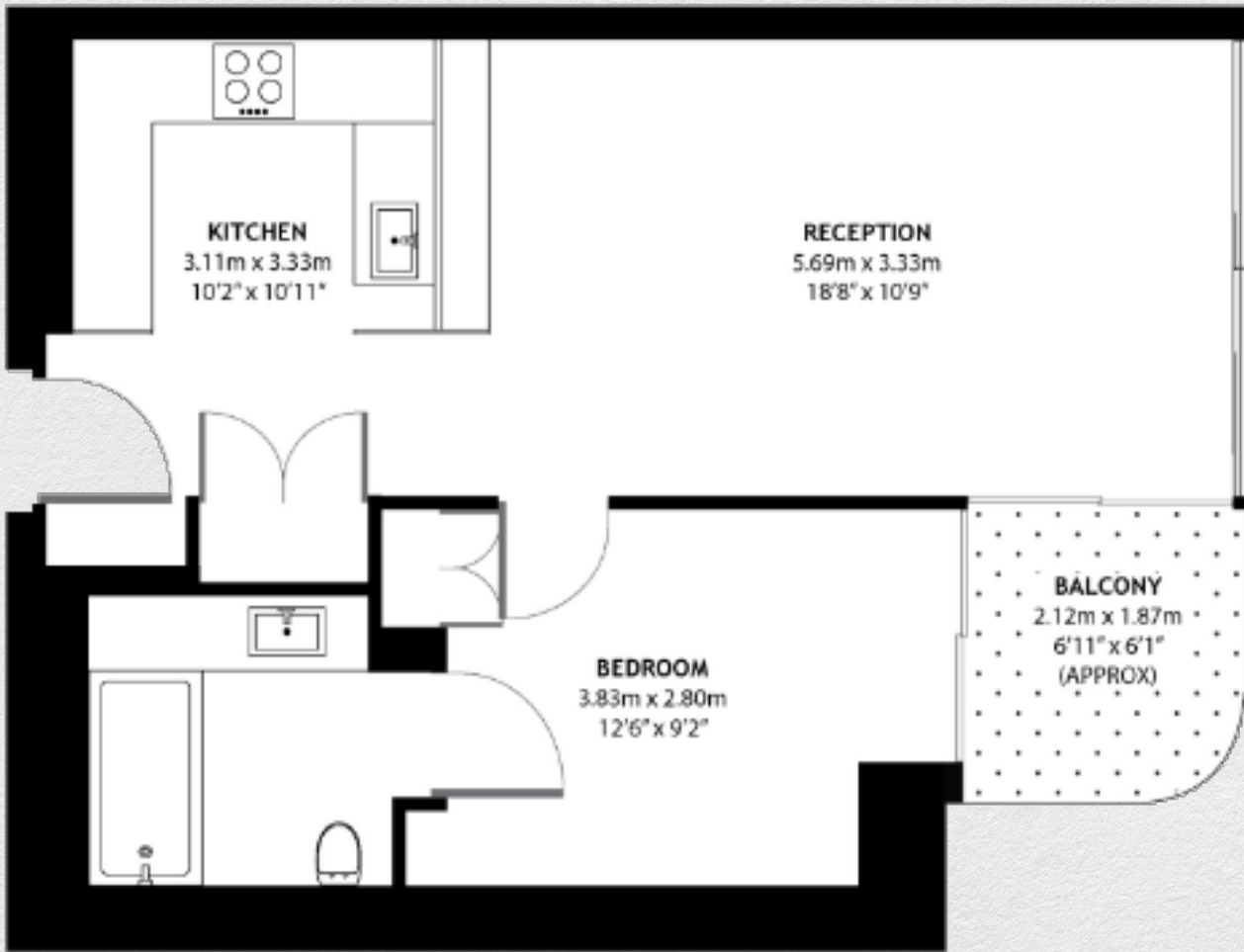
---

This stunning 1-bedroom apartment is East facing boasting excellent views over the city. The property comprises a spacious open plan reception with fully fitted kitchen, One double bedroom with a fitted wardrobe and luxury Porcelain bathrooms with under floor heating, large balcony and comfort cooling.

Principal Tower enjoys a prestigious location overlooking the heart of the City of London, the top global financial centre and Shoreditch, the trend setting capital of the world. The development boasts excellent amenities including a pool with Jacuzzi, spa, gymnasium, residents' lounge/bar, private cinema room and 24-hour concierge.

Connectivity couldn't get any better with five major transport hubs within walking distance, thus making it convenient to access all corners of the capital with ease and speed.





Address:	sq ft	bed	bath
Principle Tower, Shoreditch High St, London, EC2A	541	1	1

*\*\* For illustration purposes only. Could not be to scale. One-London aims to ensure accuracy but is not liable for any discrepancies.*