



## Koa, Battersea Roof Gardens, London, SW11

£2,500 pcm

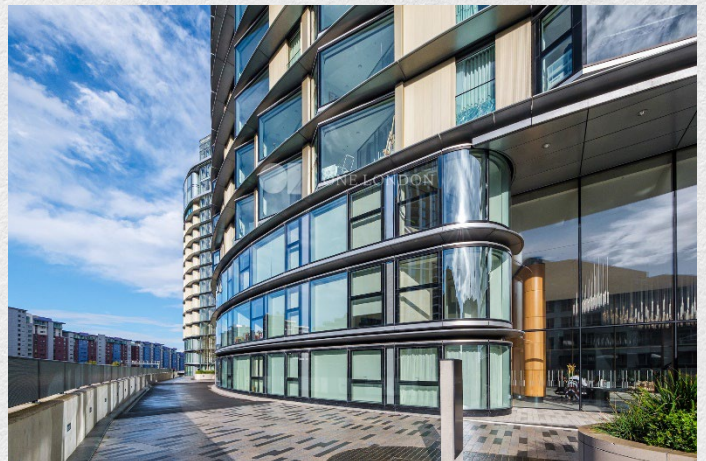
- Brand new
- Studio apartment
- Private conservatory
- Furnished/Unfurnished
- Spacious dining area
- 499 sq ft
- Luxury residents' facilities
- Highly sought after location.
- 24-hour concierge
- Great transport links

*Brand new studio apartment with a contemporary and fresh design within the latest phase of Battersea Power Station, one of central London's largest, most visionary regeneration projects.*

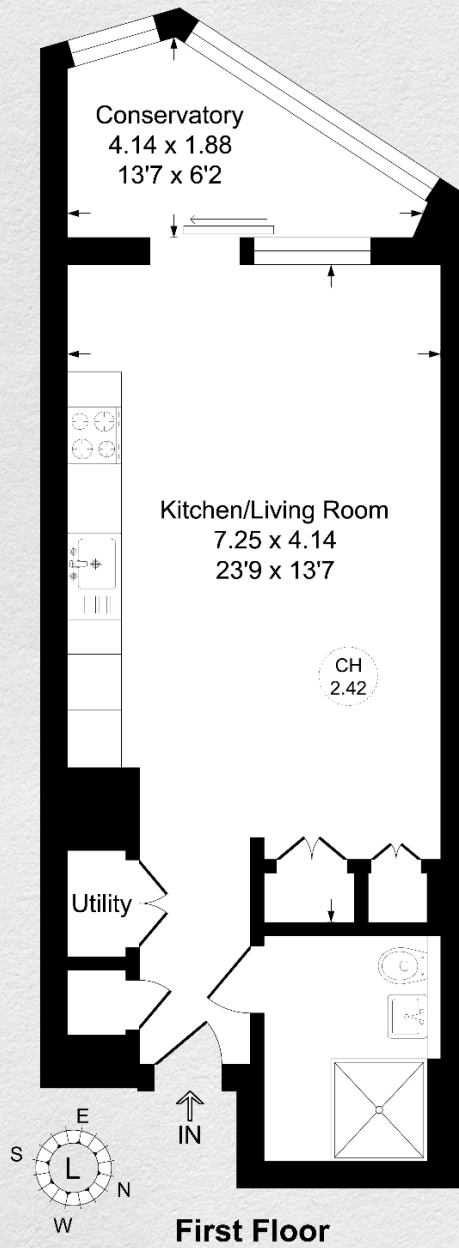
*The apartment is full of character and excitement with fresh, modernist references bringing sophistication, combined with top quality finishes and considerable natural light through the conservatory and large windows.*

*The private Sky Lounge on the 14th and 15th floors offers stunning views, a Sunset Bar, workspaces, and a gym with great views. Koa at Electric Boulevard adds vibrancy to the Battersea Power Station neighbourhood with shops, dining, entertainment, wellness centres, and an art'otel.*









Address:

Koa, Battersea Roof Gardens, London, SW11

sq ft

*internal*

499

bed

studio

*\*\* For illustration purposes only. Could not be to scale. One-London aims to ensure accuracy but is not liable for any discrepancies.*