



Alder House, Battersea Roof Gardens, London

£8,750 pcm

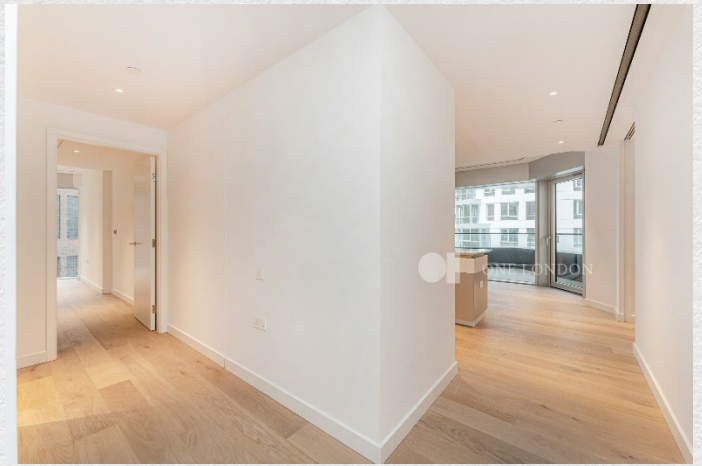
- 10th floor
- Parking available
- 3 bedrooms
- 3 bathrooms
- 1,482 sq ft
- Residents Lounge and Cinema
- 24 hour concierge
- Overlooking Battersea Power Station
- Great transport links
- Vibrant area

Stunning, 3 bedroom, 3 bathroom apartment on the 10th floor in the Foster & Partners designed Battersea Roof Gardens part of the Battersea Power Station development in London. Secure parking is also available.

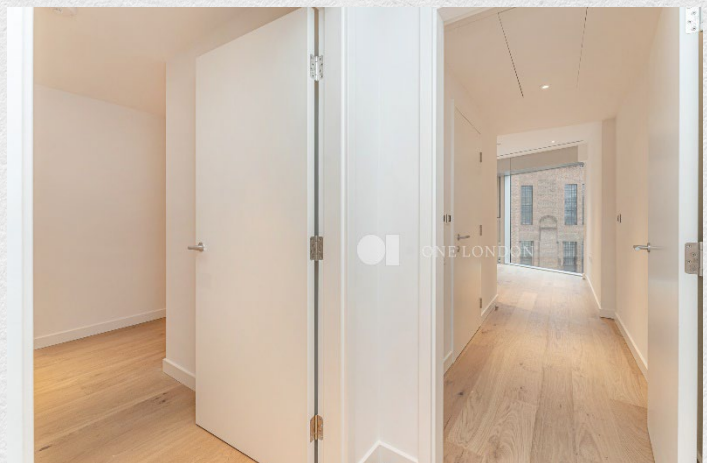
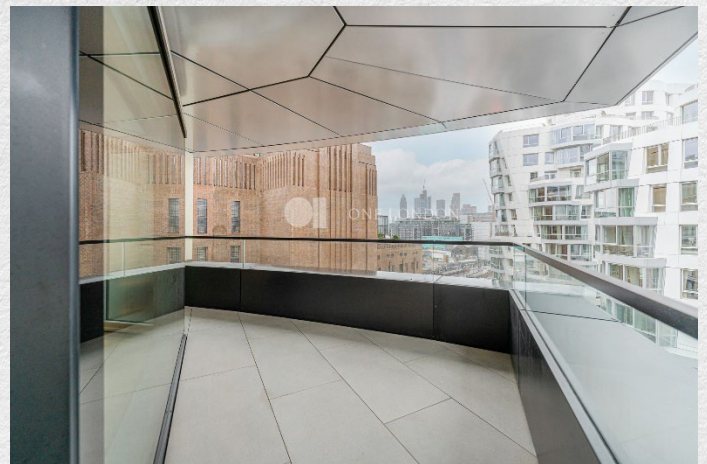
Large bright open plan living area leads onto a large private terrace. Two large bedrooms include fitted wardrobes and are en-suite, a third bedroom is perfect for guests.

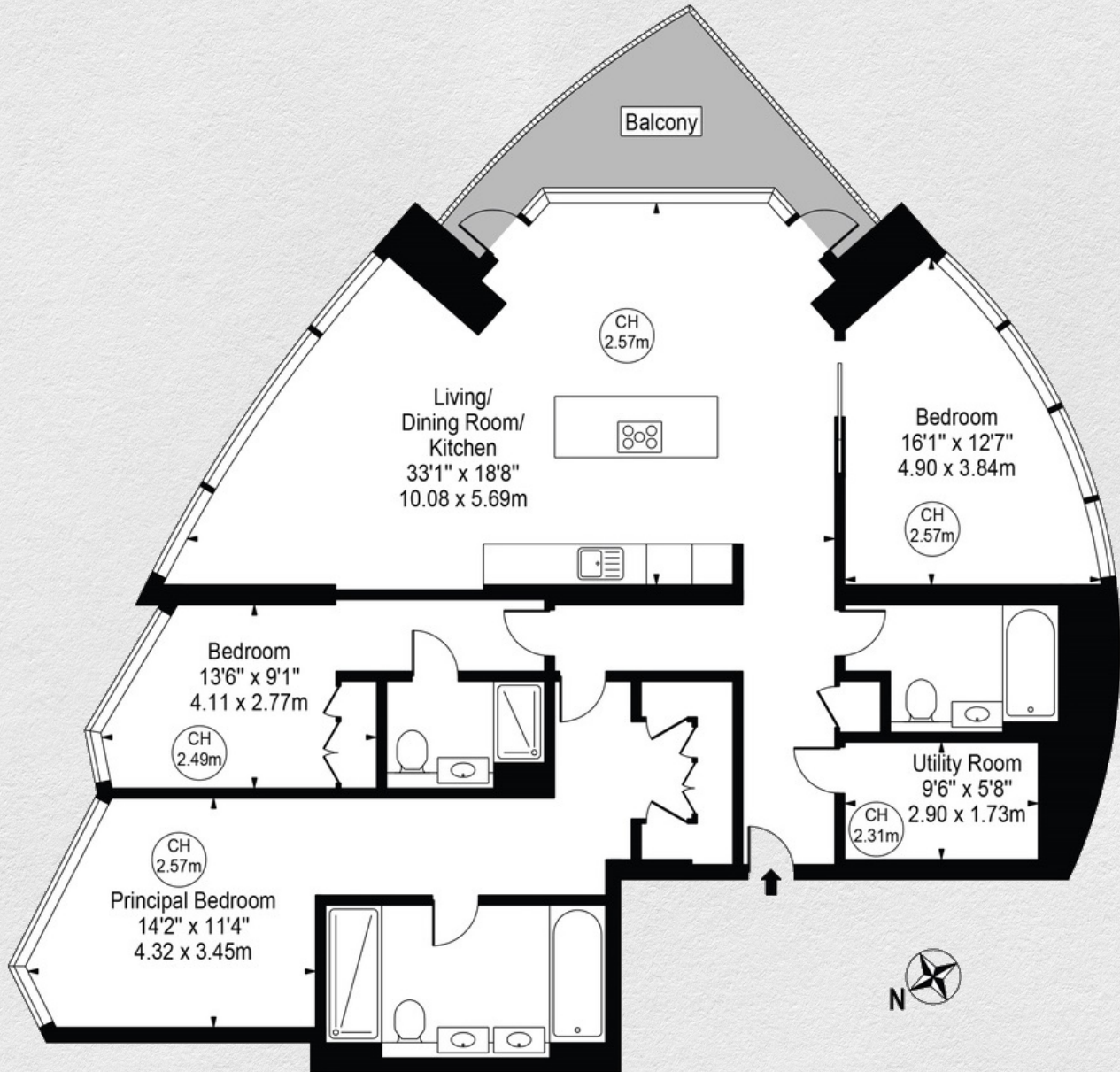
Ideal for entertaining, this stunning apartment offers a generous amount of external space providing amazing views of the Power Station, Malaysia Square and the Electric Boulevard. This is ready to move in.

Situated on the River Thames, the apartment is ideally located for Chelsea, Battersea Park and the tube, rail and Thames Clipper transport links nearby.



#





Address:	sq ft	bed	bath
Alder House, Battersea Roof Gardens, London	1,482	3	3

*** For illustration purposes only. Could not be to scale. One-London aims to ensure accuracy but is not liable for any discrepancies.*