



Dudin Brown House, Hampstead Manor, London, NW3

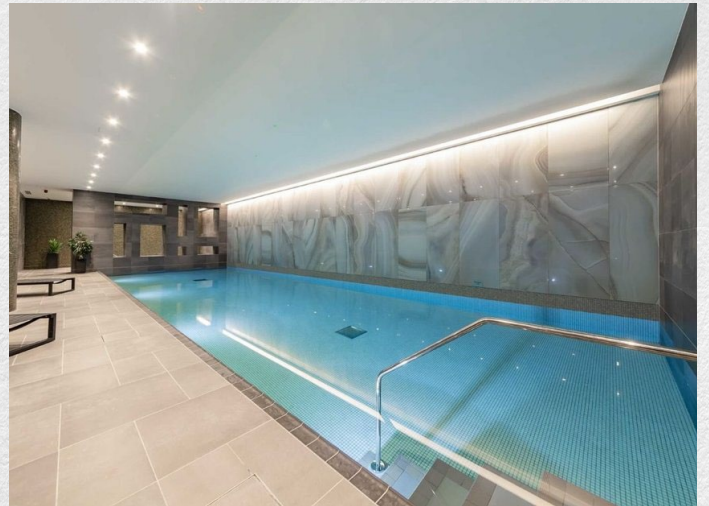
£8,000 pcm

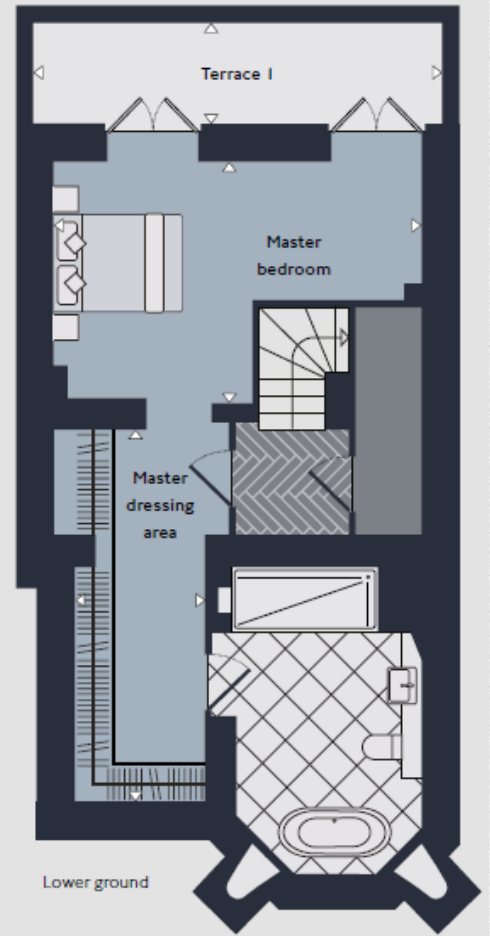
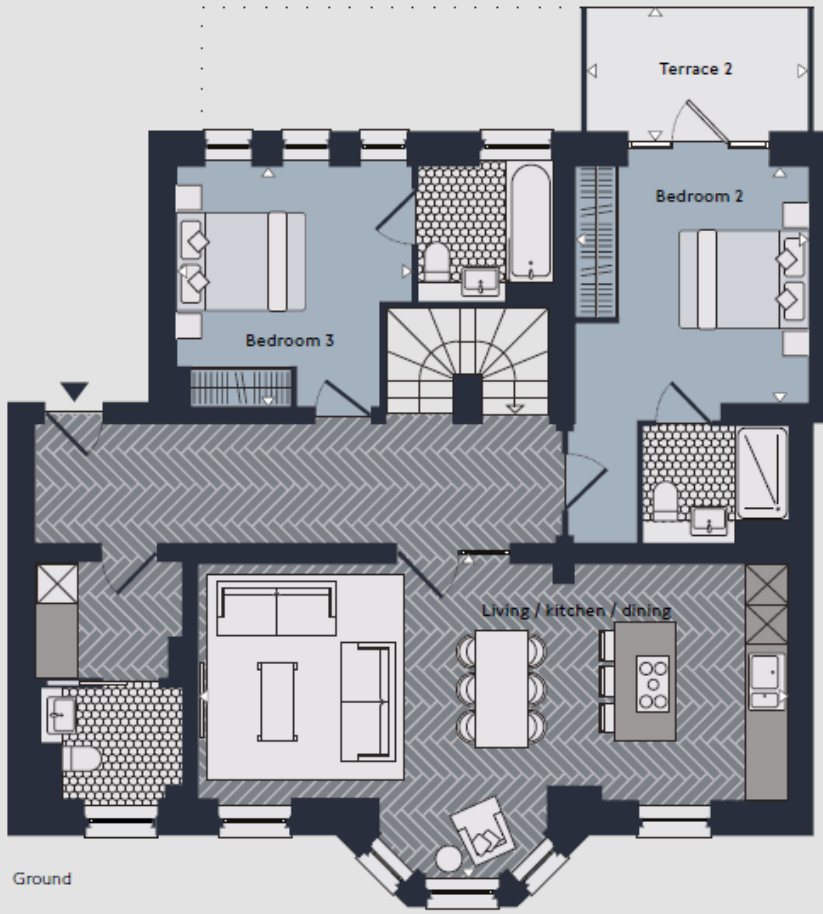
- Duplex apartment
- 2 parking spaces
- 3 bedrooms
- 3 bathrooms
- plus WC
- 1,703 sq ft internal space
- 159 sq ft of external space
- Separate utility room.
- Nearly 3m ceiling heights.
- High quality furniture to be included
- 2 terraces

A boutique 3 bed 3 bath plus WC, in a historical conversion building within Dudin Brown retaining most of its original features. The 3-bed duplex apartment looks onto either side of the building, Kidderpore Avenue and the internal Courtyard.

1,703 sq ft internal space with beautifully settings for entertaining and luxuriously comfortable rooms in which to unwind, as well as leafy viewpoints and airy bay windows.

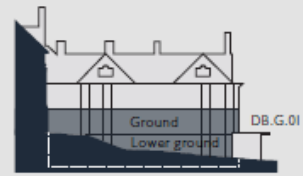
Originally built in 1905 and designed by Falconer Macdonald, Dudin Brown retains the refined erudite character of the historic building with improved contemporary relevance. This home is tucked within the tranquil Hampstead Manor development, within close vicinity to the idyllic Hampstead Village.





	Sq ft	Sq m
Total area	1,862	173.0
External area	159	14.8
Internal area	1,703	158.2

	ft	mm
Living / kitchen / dining	29' 3" x 15' 3"	8,912 x 4,644
Master bedroom	18' 3" x 11' 12"	5,556 x 3,651
Master dressing area	18' 6" x 6' 5"	5,630 x 1,960
Bedroom 2	11' 7" x 11' 6"	3,524 x 3,516
Bedroom 3	11' 10" x 11' 4"	3,605 x 3,447
Terrace 1	20' 1" x 4' 11"	6,128 x 1,500
Terrace 2	10' 10" x 5' 7"	3,291 x 1,693



**** For illustration purposes only. Could not be to scale. One-London aims to ensure accuracy but is not liable for any discrepancies.**