



Valencia Tower, Islington, EC1V

£4,000 pcm

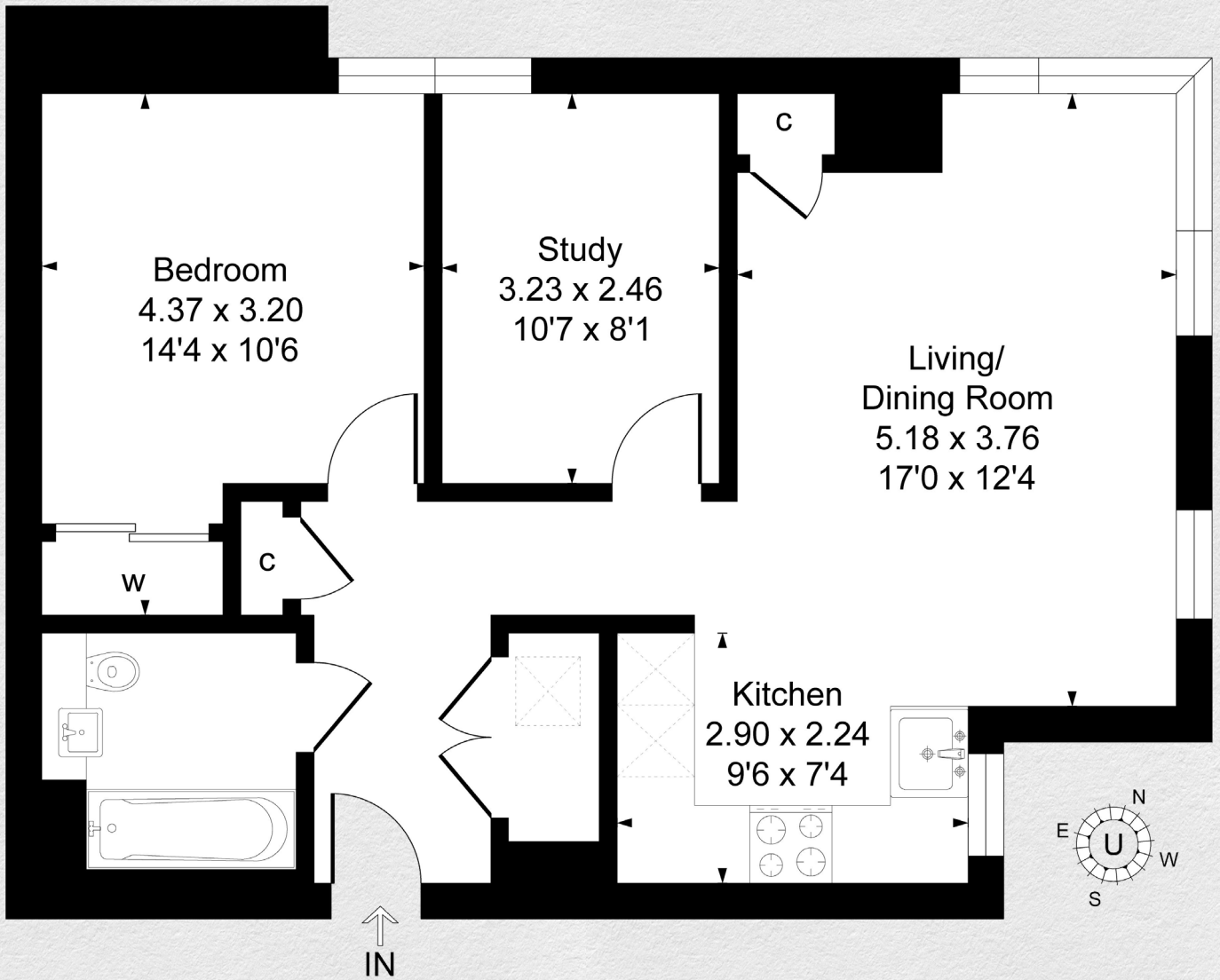
- Available June 2024
- Eight floor
- 2 bedrooms
- 1 bathroom
- 667 sq ft
- Spacious open plan living
- Screening Room & Resident's Lounge
- 20-metre Indoor Pool & Gym
- Yoga Studio
- 24-hour concierge

Available in June 2024, this spacious modern 2 bedroom apartment comprises of fitted wardrobes, open plan living, incorporating the latest technologies such as underfloor heating and comfort cooling throughout with Siemens integrated appliances built into the sleek kitchen. Loated on the 8th floor of Valencia Tower, the views across London are truly spectacular.

Each apartment exudes luxury and sophistication, complemented by access to an array of exclusive amenities such as a 20m indoor pool, screening room, residents lounge, a well-appointed gym, a tranquil yoga studio, and for moments of serenity, a rejuvenating sauna, a soothing steam room, and a selection of treatment rooms. plus a delightful terrace.

Situated within the London Borough of Islington between Old Street and Angel, this exquisite new development makes an indelible impression on the city's iconic skyline. It encompasses a magnificent 190-room hotel, a sprawling expanse of 75,000 sq. ft. dedicated to commercial spaces, and meticulously landscaped gardens spanning 1.9 acres.





Address:	sq ft	bed	bath
Valencia Tower, Islington, London, EC1V	667	2	1

*** For illustration purposes only. Could not be to scale. One-London aims to ensure accuracy but is not liable for any discrepancies.*