



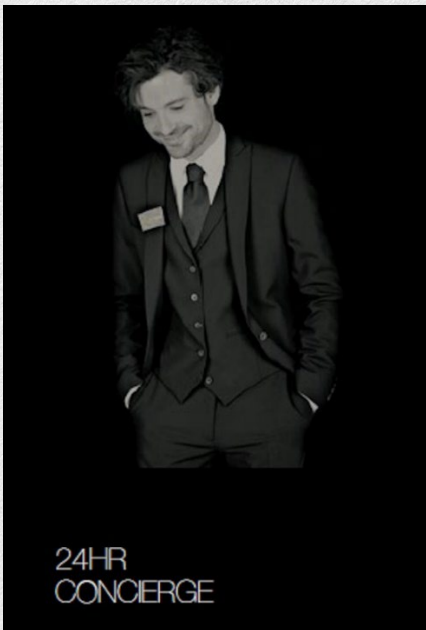
Sky Gardens, Nine Elms, London, SW8

£650,000

- 1 Bedroom
- 1 Bathroom
- 495 sq ft
- 24 Hour Concierge
- Residents Gym
- 34th Floor Communal Sky Garden
- Winter Garden
- Siemens appliances
- Comfort cooling

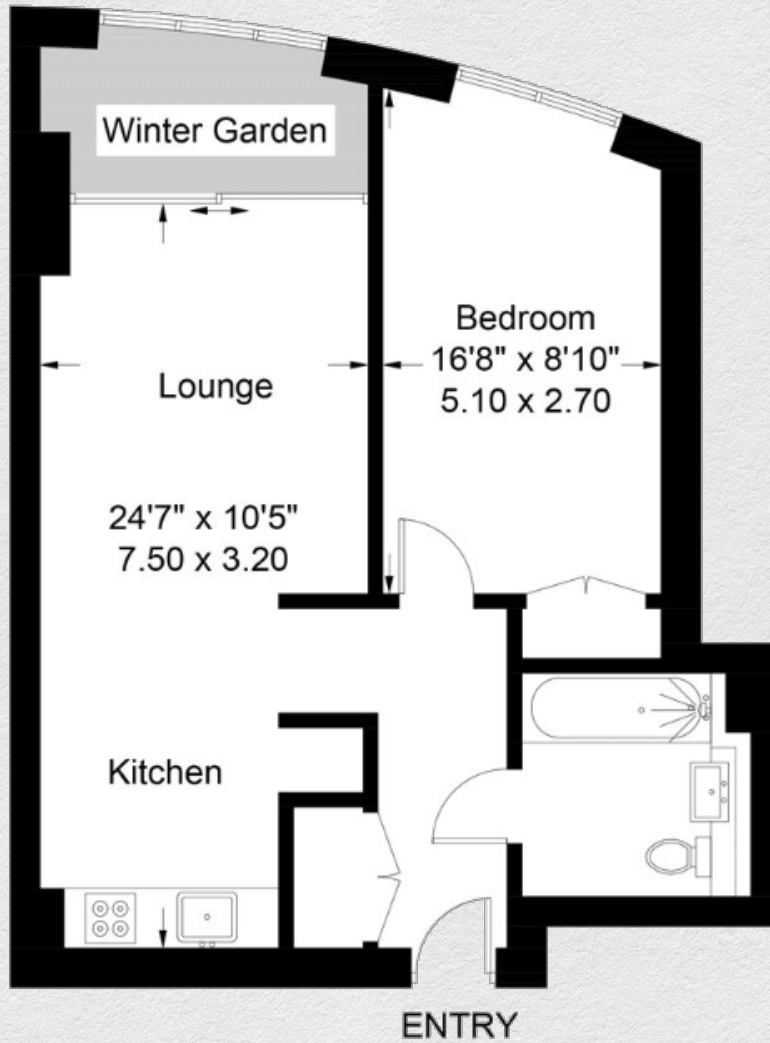
Located in the highly sought after Sky Gardens development, this bright and spacious one-bedroom apartment is not to be missed. Located on the 26th floor consisting of an open living space, a fully fitted kitchen with Siemens appliances, one double bedroom with the built-in wardrobes and a family bathroom suite. Luxury specification throughout in one of the best connected emerging riverside neighbourhoods.

Located amidst the Nine Elms district that includes the new American Embassy and Battersea Power Station, with fashionable Chelsea across the river and spectacular views extending towards Westminster and the City.



24-HR
CONCIERGE





Address:

Sky Gardens, Nine Elms, London, SW8

sq ft bed bath

495 1 1

*** For illustration purposes only. Could not be to scale. One-London aims to ensure accuracy but is not liable for any discrepancies.*