



## Hyde Park Square, London, W2

£3,250,000

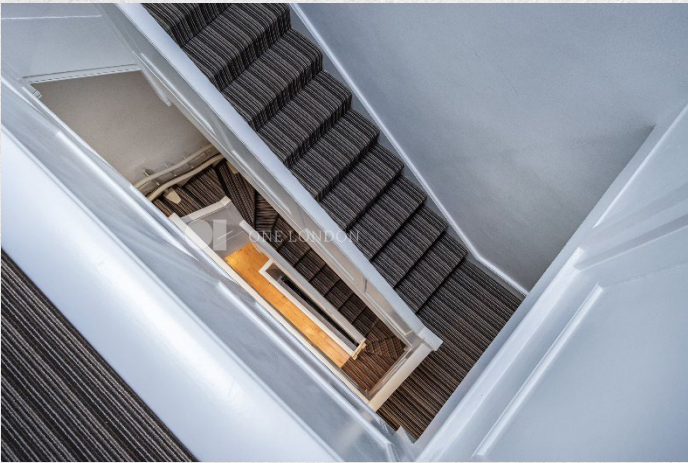
- Terraced house
- Set over 4 floors.
- Off street parking
- 5 bedrooms (2 en-suite)
- 4 bathrooms
- 2,438 sq ft of living space
- Large dual aspect reception room
- Private terrace & 2 patios'
- Prestigious location
- Excellent transport links

*Spacious 5-bedroom 4-bathroom terraced house located in the prestigious Hyde Park Square, W2. With over 2,438 sq ft of internal living space spread over 4 floors this property is an ideal family home with plenty of space for entertaining family and friends.*

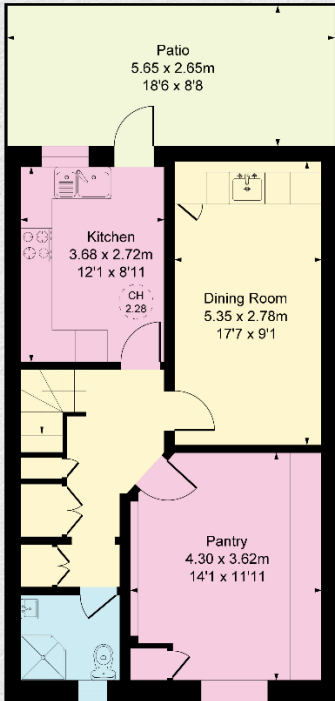
*Two of the bedrooms are en-suite with four of them having fitted wardrobes, the fifth bedroom is ideal as guest bedroom. Ample storage space is provided by the 2 utility rooms and a large pantry.*

*Hyde Park Square is one of the most prestigious garden squares in the area being on the doorstep to Connaught Village and Hyde Park. Transport links are close by with Paddington, Marble Arch & Lancaster Gate all a short distance away.*

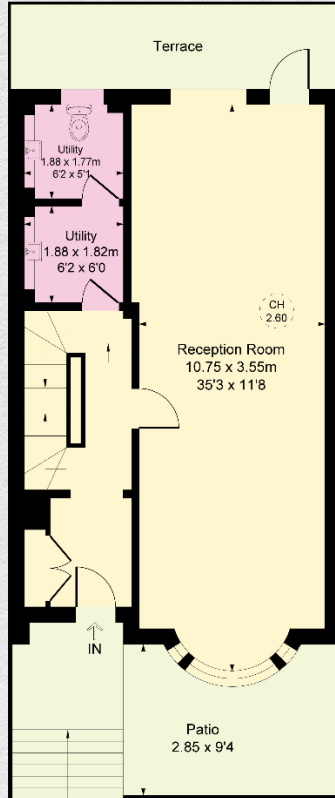




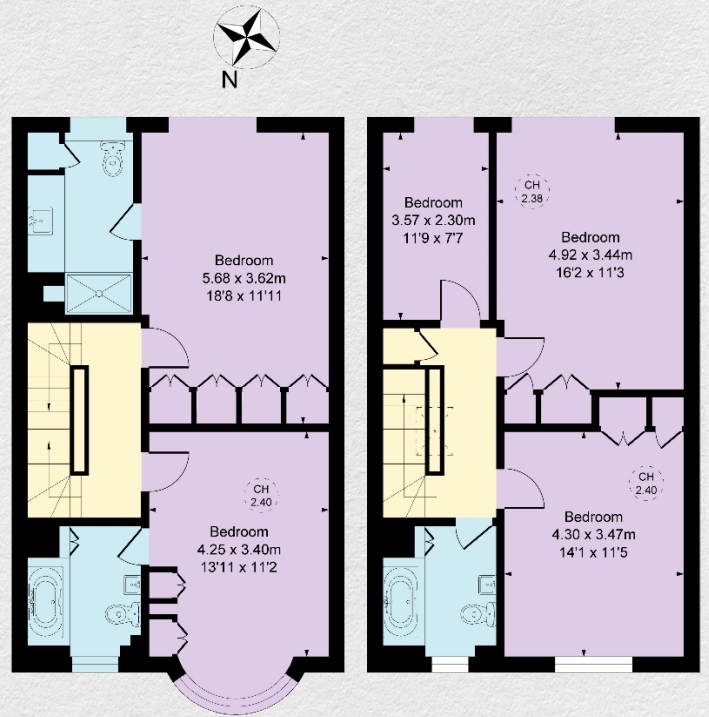




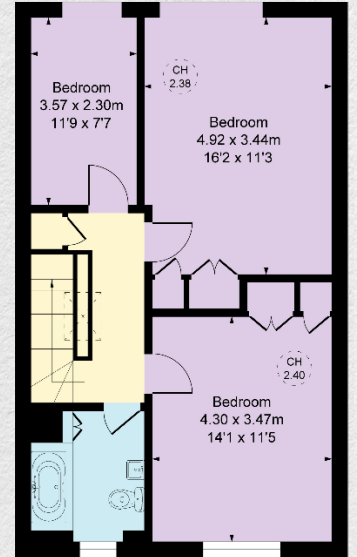
**Lower Ground Floor**  
598 sq ft / 55.5 sq m



**Raised Ground Floor**  
612 sq ft / 56.8 sq m



**First Floor**  
621 sq ft / 57.7 sq m



**Second Floor**  
607 sq ft / 56.4 sq m

Address:	sq ft	bed	bath
Hyde Park Square, London, W2	2,438	5	4

*\*\* For illustration purposes only. Could not be to scale. One-London aims to ensure accuracy but is not liable for any discrepancies.*