



## 9 Millbank Residence, Westminster, London SW1P

£7,500 pcm

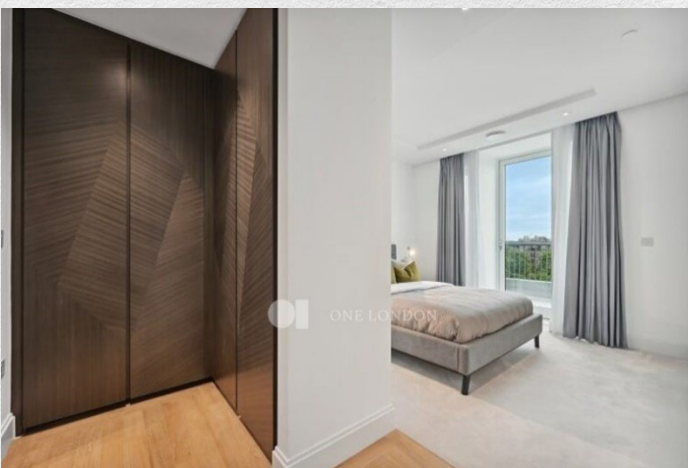
- Available August 2024
- 2 double bedrooms
- 2 bathrooms
- Modern open plan living area
- Full length terrace
- 936 sq ft
- Contemporary classic design
- Residents' gym, pool & spa
- Cinema screening room
- 24-hour concierge

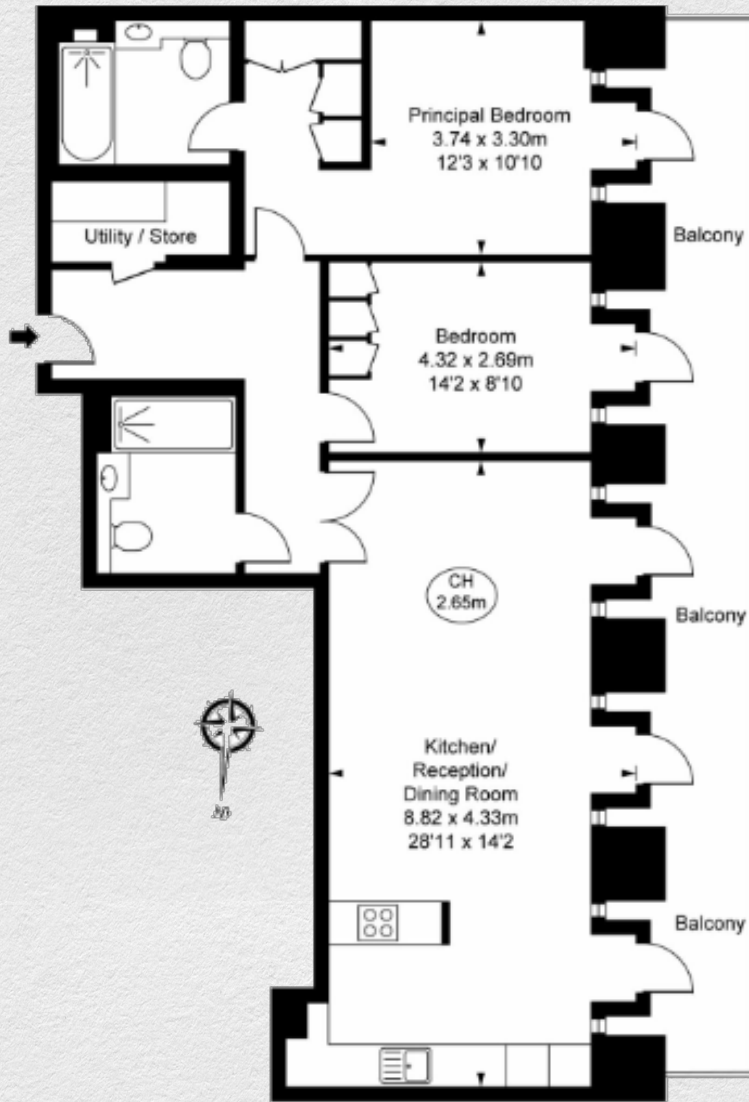
*Stunning 2 bedroom 2 bathroom apartment in the prestigious Millbank Residences.*

*Crafted to the highest of specifications with a beautiful full-length balcony, spacious open plan reception featuring a luxury kitchen with integrated appliances, principal bedroom with dressing area and en suite bathroom, second double bedroom with fitted wardrobes, luxury rainfall shower room. The apartment further benefits from a utility room, engineered timber flooring, comfort cooling and underfloor heating throughout.*

*Within the exclusive new development there are excellent residents' amenities including a Gym, Swimming pool, spa and treatments room, cinema room and 24hr concierge.*

*Millbank is fantastically located near to the theatres of the West End, amenities of Knightsbridge, and wonderful local restaurants. There are excellent educational institutions nearby as well as the transport links of Westminster, Victoria, St James Park and Pimlico Underground and National Rail Stations.*





Address:	sq ft	bed	bath
9 Millbank, Westminster, London, SW1P	936	2	2

*\*\* For illustration purposes only. Could not be to scale. One-London aims to ensure accuracy but is not liable for any discrepancies.*