



£6,000 pcm

Paddington Exchange, London, W2

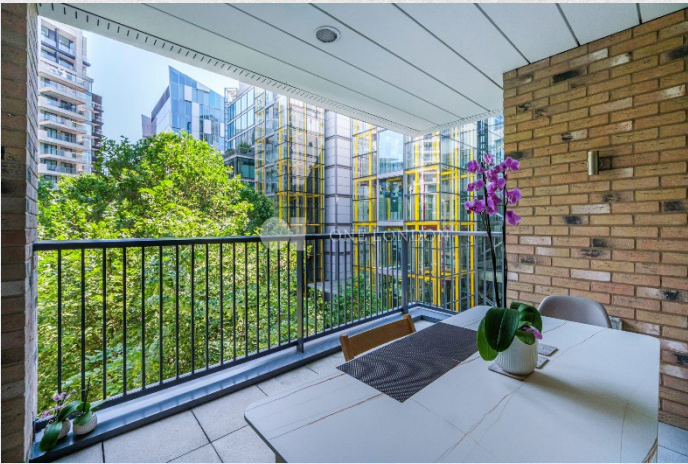
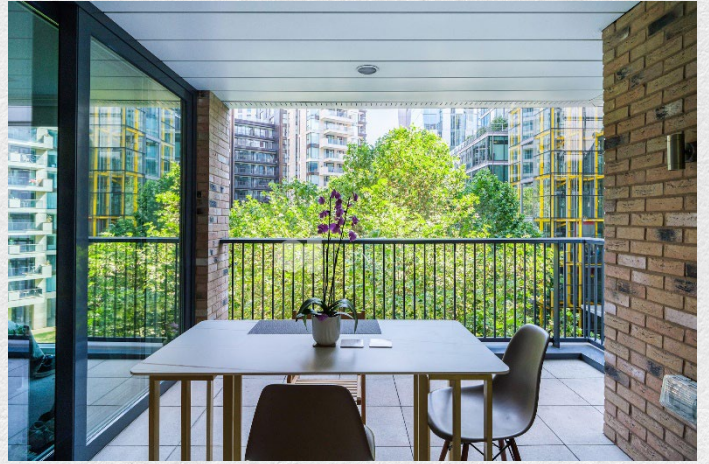
- Large corner terrace
- 3 double bedrooms
- 2 bathrooms
- 1,115 sq ft
- Balcony
- Overlooking the gardens
- Residents Lounge
- Roof Gardens
- Luxury residents facilities
- 24 concierge

Spacious 3 double bedroom, 2 bathroom apartment in a modern development located close to the Paddington Basin.

This apartment offers a spacious open plan reception including an inviting living and dining area, fitted kitchen with integrated appliances, wood flooring, fitted bedroom storage, stylish bathroom suites and a large private terrace

There are several amenities located nearby including restaurants, cafés, pubs, shops and the green spaces of Hyde Park and Kensington Gardens. The development is located a short distance from Edgware Road Underground station, providing a valuable transport link for commutes to prominent destinations located across the Capital.

The development is also within walking distance to the bars, cafes and restaurants within Paddington Basin, Little Venice and Sheldon Square



Paddington Exchange

Approx. Gross Internal Area = 103.6 sq m / 1115 sq ft

