



## 10 Watkin Road, Wembley, HA9

£540,000

- Two double bedrooms
- Two bathrooms
- Spacious dining area
- 785 sq ft
- Luxury residents' facilities
- Private balcony
- Allocated storage spaces
- Five Landscaped rooftop gardens
- 24-hour concierge
- Great transport links

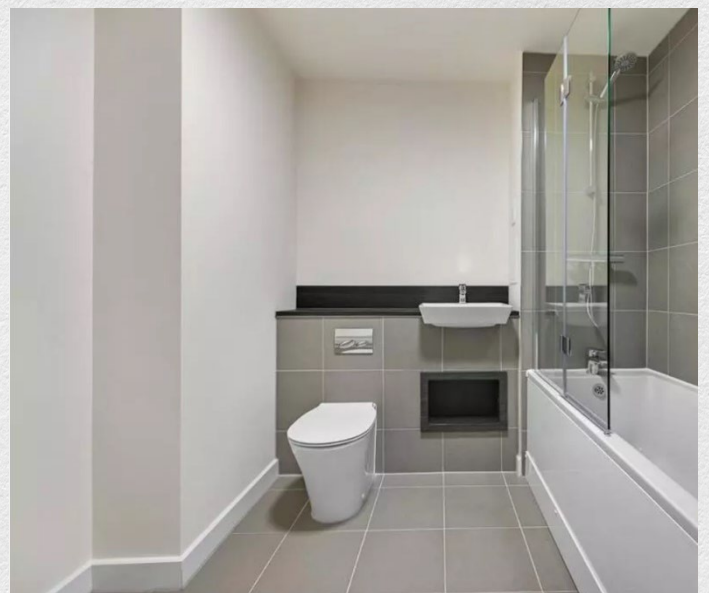
*Great opportunity to purchase a fabulous apartment in one of Wembley's newest developments with 23 stories and excellent transport links to central London.*

*This spacious two bed, two bath new build property, with a light and airy open plan living room and kitchen.*

*The development is only a few minutes' walk from the world-renowned SSE Arena, Box Park, London Designer shopping outlet, includes 50 outlets, cinema and 20 well-known restaurants.*

*Located in the heart of Wembley's regeneration project, walking distance to Wembley Park underground Station, Wembley Stadium Overground and Wembley central underground and overground station. Commuters are able to reach Baker Street in 12 minutes, Oxford Circus in 21 minutes and Canary Wharf in 31 minutes.*









Address:

10 Watkin Road, Wembley, HA9

sq ft

785

bed

2

bath

2

*\*\* For illustration purposes only. Could not be to scale. One-London aims to ensure accuracy but is not liable for any discrepancies.*