



Westmont, White City Living, London W12

£1,250,000

- 2 bedroom
- 2 bathroom
- Spacious dining area
- 838 sq ft
- 6th floor
- Luxury residents' facilities
- Private balcony
- 24-hour concierge
- Great transport links

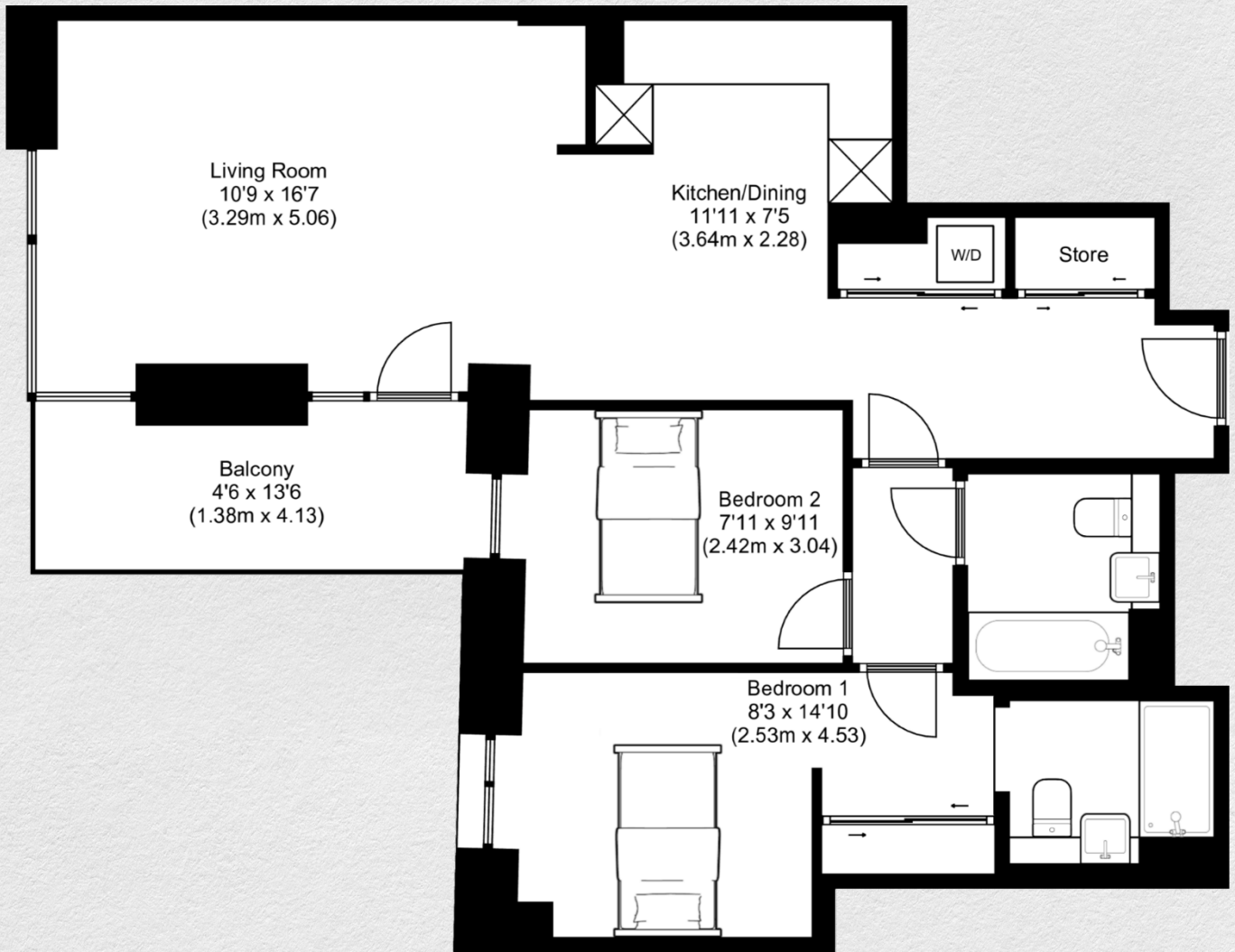
This luxury two bedroom apartment is located on the 6rd floor in the Westmount Building, White City development. The open plan 838 sq. ft of living space with a South West facing balcony overlooking the communal garden is all part of the Westmont Club experience.

The Westmont is an extraordinary lifestyle club that you can call home. A collection of suites, one, two and three bedroom apartments with 528 homes across two buildings. Featuring an extensive collection of unique, luxury amenities, including a private Mediterranean inspired rooftop Beach Club exclusively for residents. The latest addition to White City Living, the residential heart of West London's most exciting new district.

White City Living is rising up from a whole new London landscape that has nature at its forefront. It's West London's brightest new neighbourhood.







Address:

Westmont, White City Living, London, W12

sq ft

bed

bath

838

2

2

*** For illustration purposes only. Could not be to scale. One-London aims to ensure accuracy but is not liable for any discrepancies.*